

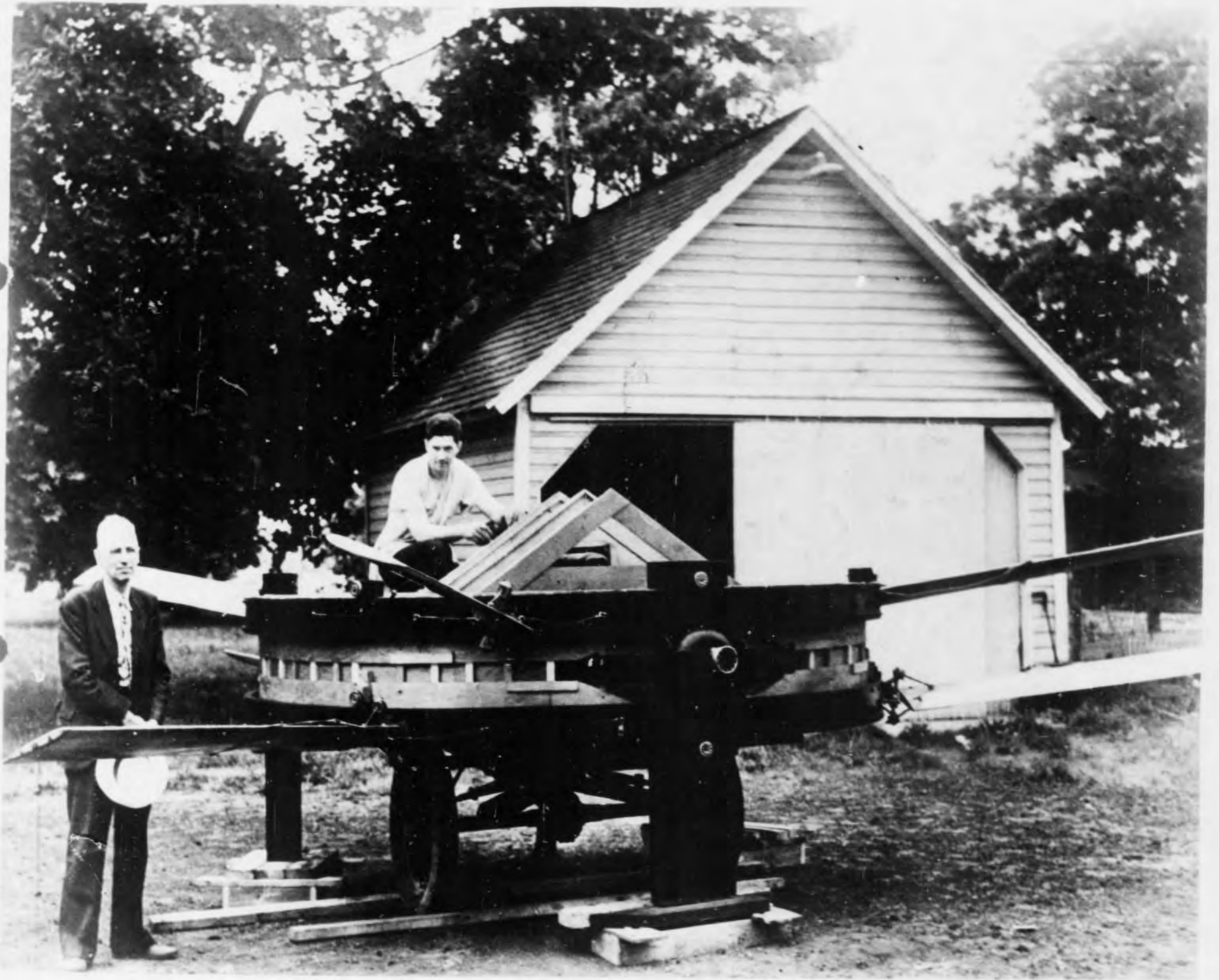
Chron. 24-185-221

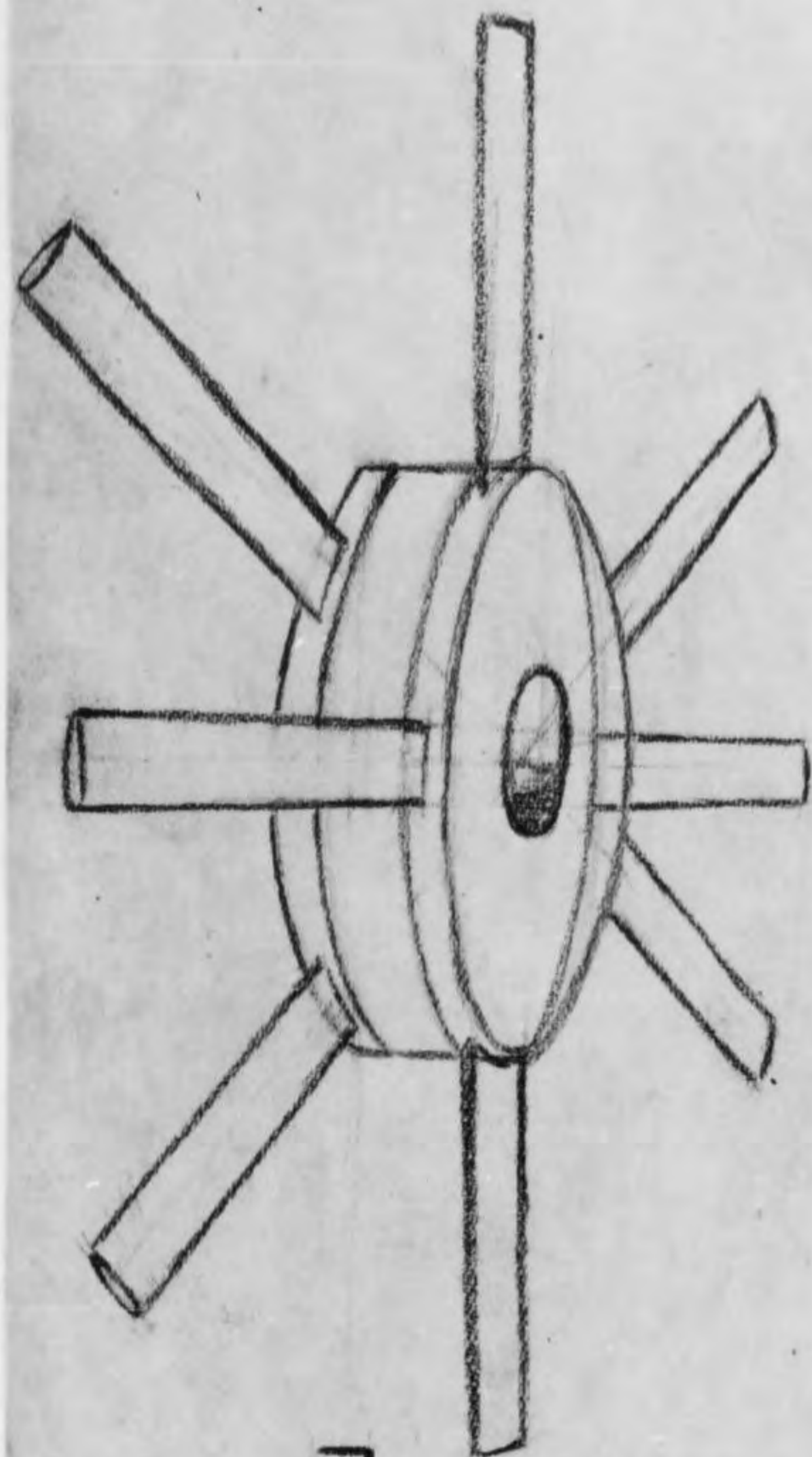
"Gray Goose"

August 23, 1949

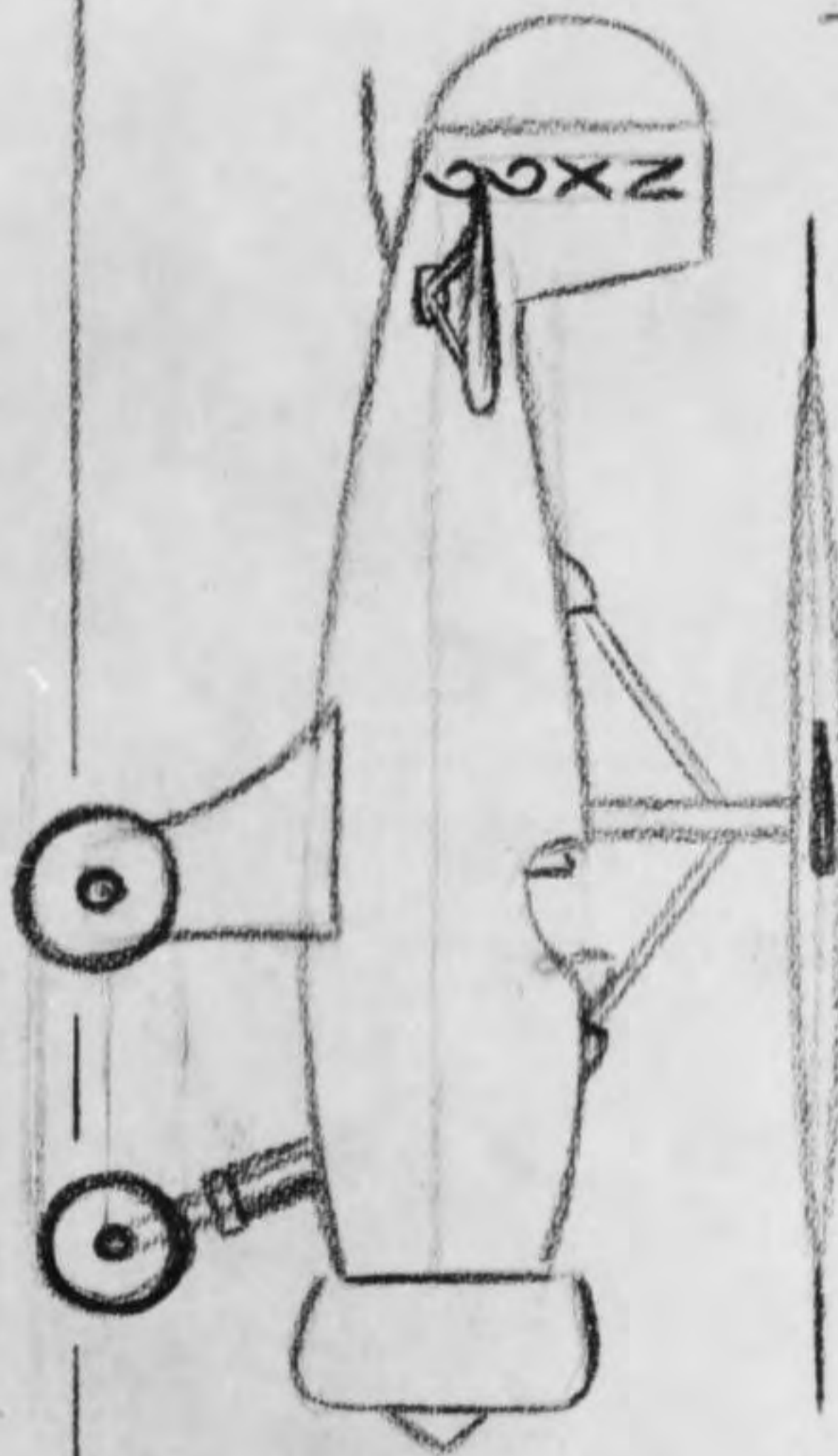
Baltimore, Maryland

15 Photos

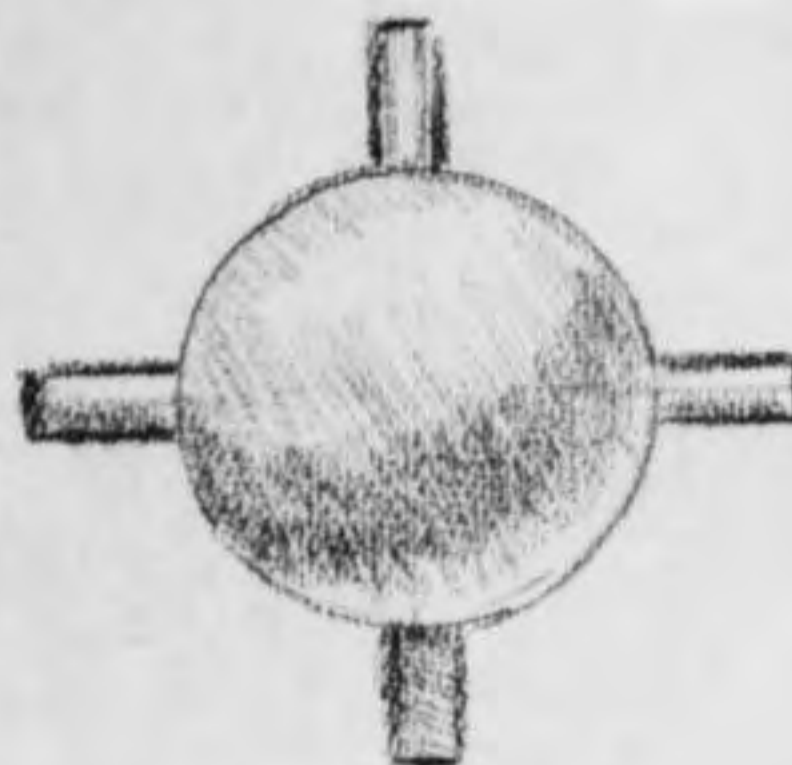




ROTO-PLANE



GREY GOOSE



24-93 Photo No. 1 - Artist Conception drawn by Mr. George Rolfe, Baltimore, Maryland from a description furnished by S/A C. E. Belk, 18 August 1949.

~~CONFIDENTIAL~~

~~CONFIDENTIAL~~

24-93 "Grey GOOSE"  
Photos No. 2,3,4



Tail assembly and part  
of disc.

Fuselage showing cockpit  
and part of disc.

Disc showing tripod mounting  
and brake drum.

~~CONFIDENTIAL~~

24-93 "Grey Goose"  
Photos No. 5,6,7.



Disc showing tripod mounting,  
brake drum and interior  
plywood ribbing.  
Rotor-plane and bands in  
background.  
Landing assembly (gear) at  
extreme left.



Side view of fuselage.



~~CONFIDENTIAL~~

~~CONFIDENTIAL~~

24-93 "Gray Goose"  
Photos No. 8,9.



View of tail assembly  
Note CAA No. NX 99Y



~~CONFIDENTIAL~~

24-93 "Grey Goose"  
Photos No. 10,11.



Full view of  
fuselage.



~~CONFIDENTIAL~~

24-93 "Grey Goose"  
Photos No. 12,13.



Disc with fuselage  
and cockpit on right.



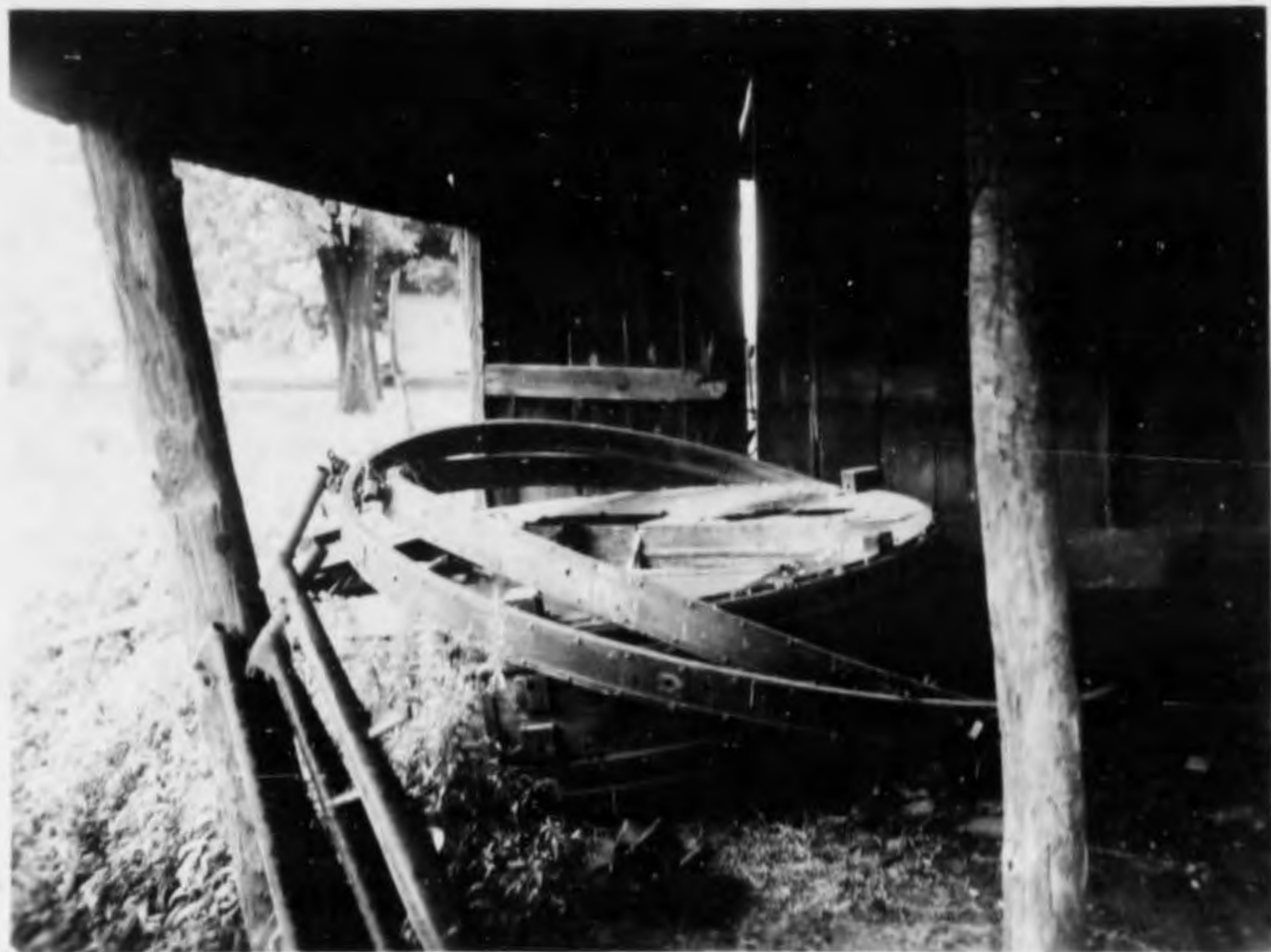
Disc with rotor plane  
in background.



24-93 "Grey Goose"  
Photos No. 14,15.



Side view of fuselage  
showing engine mount.



View of rotor plane.

Chron. 24-185-221

August 31, 1949

"Grey Goose Corporation"

Rotor-Plane Co.

Baltimore, Maryland

1 Photo.