



ISSUE NO. 43

MARCH, 1993



170 Strathcona St.,
Cambridge, Ontario,
Canada, N3C 1R4

519-658-6775

C A M B R I D G E U F O R E S E A R C H G R O U P

NEWSLETTER - MARCH, 1993

We had 3 speakers at our November meeting. Cecilia Van Manen, one of our members, spoke about her recent trip to Lillydale, N.Y., wherein several speakers talked on the subject of UFO's.

Howard Metz (P.O. Box 341, Malverne, Long Island, N.Y., 11565, telephone 516-889-6211) is involved in:

pyramid structures, sacred geometric connections with other planets in our solar system, crystal technology, secret government world leaders, record of ET life, NASA tapes, pyramid on mars, decoding of great pyramids, esoteric belief systems related to extraterrestrial intelligence, religion, past and present.

George Dickson (1255 Minerva, West Islip, N.Y., 11795, telephone 516-661-6551) spoke on:

interdimensional travel, missing time, anti gravity propulsion system, crash retrievals, abductions, encounters and types of aliens, past civilizations, Atlantis, Lemuria, pangie, yokar tapes (Michael Morgan's transchannelling of an entity believed to be from Atlantis), Mars, Sedona connection, crop circles and grid systems.

Discussion was also held on the healing powers of Essiac. You can read about Essiac in the book "Calling of An Angel", by Gary Glum. An article pertaining to Essiac appeared in the local paper, it is attached.

Howard Metz spoke in length about the Mars Mission, data on this follows.

At the Sept. meeting Gerald Hart showed pictures he took near Lake Scugog. The report and pictures follow. At our October meeting, Mike Bird brought 9 slides of

the landing. Coincidentally, he had heard about the landing from Henry MacKay, another UFO researcher. In Sept. of 1976, he went to the sight and took slide pictures. We compared his slides and data to the photos and data Gerald had. Mike's slides showed the grass flattened and matted down and swirled in a counter clockwise pattern. He found 2 depressions and a hole in the centre of the circle, about 1' deep. He thought the circle to be less than 60' in diameter.

Henry Romanburg, ended our meeting speaking about the celestial mechanics of the heavens, the cosmological scientific perspective.

On December 19th students of Monsignor Doyle Secondary School came to my home and did a ½ hour video tape for a UFO project they are presenting.

On January 2nd Stacey Barr interviewed me for a school UFO project he is presenting to the students at Jacob Hespeler Secondary School.

I was interviewed on the CFCO radio station, Chatham, on Thursday, Jan. 14/93. Wendy King has a ½ hour coffee club show, I answered various questions from 8:30 AM to 9:00 AM.

Henry Romanburg was the guest speaker for our January, 1993 meeting. He spoke about his recent trip to Argentina, he was there for the month of December, 1992.

Henry went to 3 UFO meetings on UFOs, which were festive and social. A lot of the material he heard was familiar. The subject is ignored in North America, but is given more credence in Latin America.

Las Heras is a famous investigator in Argentina, he wrote a small book on original material. In 1580 at 1:00 A.M., a redish, shiny, object was seen to emerge from the water, object climbed towards sky, lingered over mountain. Assumed shape of long sphere, appeared as half moon, shape changed. Silent, no noise, sailors did not perceive phenomena supernatural. 400 years later, other people in same region saw UFO coming into and out of water.

In 1631, in northern Argentina, area where jesuits and missions, teaching natives. They saw luminous, balloon type object emerge from jungle, around 6:00 p.m. Passed over village, resembled full moon, the light illuminated jungle.

Customs employee in Peru took picture of UFO in July, 1952. Picture shows a trail of smoke. UFO lands and takes some of the soil. A picture shows a huge crater after the UFO departs. Mountains of Bolivia, Chile and Argentina, have tremendous concentration of landings and sightings.

In June, 1965, Chilean and British see object stop in mid air. July, naval detachment sees similar object which zig zags. Same day transport ship from Chile sees craft. British see redish object. Craft immobile 10 minutes over British base in July, 1965. Was beginning of 1965 wave. Secretary of Naval Affairs reported 17 individuals observed phenomena. Britain kept information secret. Argentina takes

UFO reports as a part of nature. Even mentioned in churches. Armed forces in Argentina take an open mind. Some people are transported from one location to another without being aware, other types of abductions occur.

One article in paper was about the military challenging 21 UFOs over the Brazilian sky. This happened in May, 1986 and was reported by the Minister of Aeronautics that F-5's pursued 21 UFOs. One F-5 was accompanied by 13 UFOs, 6 on one side and 7 on the other. Pilot reported this.

Oceanographic ship in January, 1958 took picture of craft over an Island. This data was sent to Chief of Brazilian Navy, States tried to stop data on UFOs being leaked out. People in Latin America conditioned to UFOs. In Latin America's version of Popular Science, UFOs are featured.

Patrol troupe in mountains, see lights side of mountain, 600 ft. from patrol. Patrol comes as close as 150', see diameter of object between 25-35'. Corporal advances with weapon ready, he penetrates violet fog, like a spider web. Corp. melts into fog and disappears, hear a scream from corp. Corp. appears later, from opposite direction and faints. His watch shows 7 days later, his beard and mustache show phenomenal growth. Corp. gave interview to Antonio Las Heras and then info sealed by military.

There is no official research centre in Latin America. Henry gave an insight to the South American UFO scene. He will be speaking again, as per request from the group.

John Dowdell suggested summer meetings, the positive response shows this to be a good possibility.

Tom finished off the meeting with a test. An engineer decided to conduct a test for abductees and compare it to non abductees. Tests electromagnetism. Test looks at: - physical side; psychological side, parapsychological side.

Everyone present at the meeting took the test, and Tom will bring the results to the next meeting.

I would like to thank the members very much for their generous gift of a fruit basket, which was deliciously consumed and the gift certificate for a Centre in the Square performance, which I will get much enjoyment from. This was presented to me at the November meeting.

At this time, I would like to thank Cecilia VanManen for her great assistance in phoning members and the tedious task of the food list (which, to her relief, will no longer be necessary).

Also, I would like to thank Stefan Szpular for kindly accepting the task of taking the minutes of the meetings, which I will then condense and transcribe.

I would also like to thank Jim Otto for helping me with the tedious task of hand colating this newsletter.

To everyone, a big T H A N K Y O U!

We had 3 guest speakers for the March meeting. The first speaker was George Prince. He spoke on the following:

-Aetherial Society, George King

-Urantia book - channel earth - analysis of Urantia book - no human consciousness could create it

-Project world evacuation

- Ashtar group

-On earch assignment by Tuella

-read sections from yoga leader

-super mind above the spiritual mind

-inner guide and evil gudes to meditation

-listen to 97.3 AM Extraterrestrial Communication 7:00 A.M. Sat.-Sun.

Scott Jordon and Tom Theofanous spoke next

-plethora of books

_analyze people and motives

-answer may be in integrating number of areas together, need more scientific investigators

-difficult to prove physical side of abductions, but should not walk away from abduction phenomena because of lack of proof

-tackle this area from different perspective and study in more detail

-many people go into research with their own pre-conceived bias

-by bringing together all disparate areas of research, one might find a better way

_Scott spoke about Stratetic Research Institute studying remote viewing at Princeton University

-precognitive remote perception, when person gives target before arrival of target

- extremely controlled

-individuals and companies are paying big bucks for S.R.I. remove viewing

We enjoyed the talk given by 3 of our members

We discussed the new movie being released on March 12th, "Fire In The Sky", based on the 1975 true abduction of Travis Walton, in Snowflake, Arizona. Paramount pictures contacted me and sent me free passes for the preview showing on March 11th in Toronto and Hamilton and also kindly provided me with flannel shirts with the logo "Fire In the Sky". I am impressed with their promotion, being handled by Anne Davidson of Toronto. The attached provides some data on the movie, taken from the "Handbook of Production" Information, Copyright by Paramount Pictures. This will be a separate insert with the newsletter. I know they will get a large turnout by the people directly involved in UFO research and others that are interested in this subject.

Bonnie Wheeler

Bonnie Wheeler, President,
Cambridge UFO Research Group.

Jan. 7/93

K-W RECORD

Imitations spur distribution of 'real' Essiac

By Miles Socha
Record staff

Once available only through Health and Welfare Canada's emergency drug release program, Essiac, a controversial herbal drink some believe works magic on terminal cancer patients, is now sold as a "food supplement" through a Cambridge mail-order company, a Waterloo health-food store and a Waterloo naturopath.

David Dobbie, a semi-retired scientist in Campbellton, N.B., who owns the rights to the original trademarked Essiac formula, said in an interview he decided to make it more widely available in the face of competition from others who claim to have the original formula.

Controversial herb drink said to help cancer patients

Originally made by native Canadians in northern Ontario, Essiac became international news 60 years ago when Bracebridge nurse Rene Caisse obtained a recipe and began treating terminal cancer patients with the remedy, which takes its name from the backward spelling of her name. She reportedly healed thousands of cancer victims in the '20s, '30s and early '40s.

When Caisse died in 1978, the rights to the Essiac name and recipe were signed over to Respirin Corp. of Toronto, which produced and distributed it for about 12 years.

In August 1991, Dobbie signed an agreement with the Maryland-based Mankind Research Foundation,

which took over the exclusive worldwide rights to the Essiac name and original formula from Respirin.

Dobbie said he has unequivocally confirmed with documents signed by Caisse shortly before her death that Respirin's formulation — now his — is the real one.

Nevertheless, many companies distribute Essiac-like products, others claim to own Caisse's formula and various recipes have been circulating for years.

The herbal mixture, which consists of wild turkey rhubarb, sheep sorrel, slippery elm and burdock root, is now mixed and packaged to Dobbie's specifications by Pharmaceutical Technologies Inc. in Guelph.

Since last October, three major distributors have sold it to knowledgeable health-food stores and naturopaths across Canada, Dobbie said, careful to stress that "we make it available purely as a food supplement."

Making medical claims about Essiac contravenes the Food and Drug Act and violators can be prosecuted.

The federal government considers Essiac an unproven and ineffective cancer treatment and only authorizes its release on compassionate grounds under its emergency drug release program. On those occasions, it obtains the Essiac from Dobbie.

Now, however, the emergency

drug appeal process is unnecessary. Jim Oliver, who runs a Cambridge mail-order business called Oliver Enterprises, said he heard of Essiac through a friend and decided to sell it.

He said his wife and another relative take it to rid their bodies of toxins.

Waterloo naturopath John Bender also distributes Essiac and it is available at Natural Food Market in Waterloo.

One ounce of Essiac powder sells for about \$39.50. It makes approximately one litre of Essiac drink which, according to the recommended usage, lasts about eight days.

Oliver Enterprises can be reached at Box 21044, Cambridge, Ont., N3C 4B1 or by phoning 893-4092.

MARTIAN HORIZONS

"Exploring the Dimensions
of Cydonia..."

Winter 1992

The Quarterly Journal of *The Mars Mission*

Vol. 1, No. 3

THE ULTIMATE EARTH-MARS CONNECTION: CYDONIA AND AVEBURY/SILBURY?

London — Astonishing new evidence uncovered over the past six months by *The Mars Mission* points directly toward the ultimate Earth-Mars connection: a point-by-point reproduction of the Cydonia complex in the English countryside, some 60 miles west of here.

Centerpieces for this scale model are Avebury Circle, the most magnificent of ancient Britain's stone and earth henges, and Silbury Hill, the largest man-made mound in Europe, which lies a mile south of Avebury. Although both structures are dated by archaeologists to be at least 4,500 years old, their construction, dates, and purposes remain a baffling mystery to experts. Avebury is enormous — over a fifth of a mile in diameter, compared to about 100 feet for Stonehenge's stone circle. Silbury looks like a small cinder cone, slopes upward at a nearly consistent 30° to a height of 130 feet, with a 100' diameter flat top (see fig. 1, p. 2).

It was Richard Hoagland who first suggested the possibility of a link between Cydonia and the ancient megalithic sites in England. Having read in the works of Alexander Thom that the standard unit of measure used at Stonehenge and elsewhere is the so-called 'megalithic yard,' or 2.72 feet, Hoagland pointed out that this number is remarkably coincidental with the 'tetrahedral ratio' discovered at Cydonia. This correlation — and its possible further connection with crop glyphs — is fully explored in the *MH* summer 1991 issue in "The 'Crop Glyphs' and the 'Message of Cydonia.'"

The possibility of a one-to-one correlation between Avebury/Silbury and Cydonia first came to David Percy, now *TMM's* Director of (cont. p. 2)

Hoagland Address At The United Nations

New York — In a significant breakthrough for the ongoing investigation of the Cydonia anomalies, *TMM* founder Richard C. Hoagland is presenting a major address at the United Nations in New York. Hoagland speaks February 27 at 12:30 P.M. in the main auditorium of the Dag Hammarskjold Library before an audience of delegates, media, and the general public.

Hoagland's speech focuses on not only the eight years of extensive research carried out on the Cydonia area by *TMM*, but also reveals major new discoveries in the investigation, including recent analyses of crop glyphs. The forum is the major platform from which the existence of the Avebury/Silbury replication of Cydonia is being made public.

The discussion also deals with the philosophical and scientific implications of the dramatic findings of ruins on Mars, their political impact on the American government to date, and the role the United Nations should play in helping to confirm (concluded p. 16)

MARS OBSERVER UPDATE (see p. 17)



Figure 1: Aerial Photograph of Avebury Circle and Silbury Hill (right background)

Avebury/Silbury (cont. from p. 1)

Operations (Europe), in August 1991, when he was studying two unusual crop glyphs which had appeared recently near the ancient British sites. He had also just received a copy of the first issue of *Martian Horizons*, and the Hoagland's *Mars* video tape, complete with photo/map of Cydonia. The latter contained, of course, one of Hoagland's many verbal and photographic references to Silbury Hill and its specific similarity in shape to the Martian Tholus.

Percy's first crop formation was a large circle surrounding two smaller ones, laughingly referred to by other researchers as 'two eggs in a frying pan.' Since Percy knew Avebury not only had a perimeter stone circle within its ditch and earthen walls, but also two stone circles about its center, the intent to mimic it in crop formations was certainly feasible. Subsequent investigation by TMM's Carl Munck of Alexander Thom's definitive diagrams of Avebury show that a line connecting the centers of these two smaller circles forms an angle of 19.5° with true north-south.

But the second glyph was the clincher (Fig. 2), having been placed only a few hundred yards south of Silbury Hill, pointing directly past its left hand *tangent* toward the exact center of Avebury beyond. This formation consisted of two circles of unequal size (27' and 67' diameters), connected by

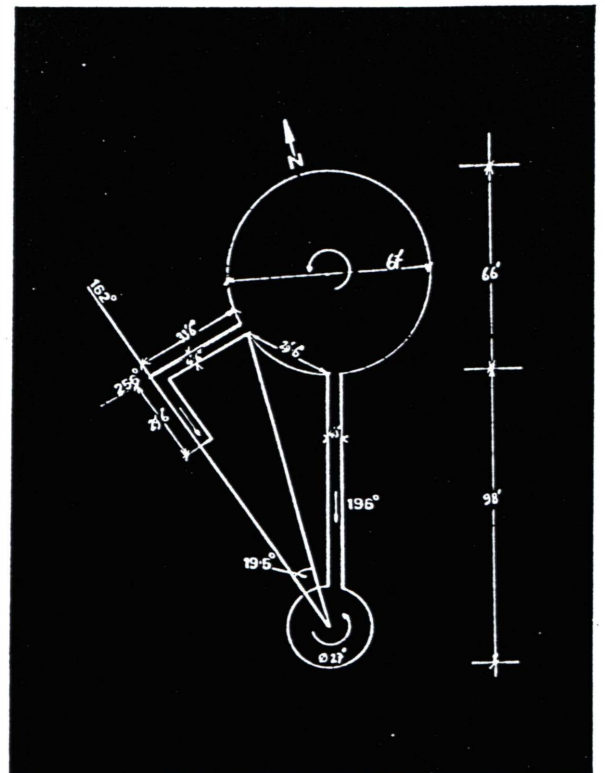


Figure 2: Silbury Hill Crop Glyph

a long, narrow swath of flattened crop in the form of a line. Additionally, a second line extended outward some distance from the larger circle at an angle of 60° from the connecting line. It then bent downward at a 90° angle, pointing directly back to the smaller circle. Percy made an instantaneous match in his mind: the smaller circle represented Silbury Hill, the larger Avebury, and the bent line was the Cliff.

Further analysis carried out much later has changed the interpretation of the glyph somewhat, but it was Percy's initial conclusion which led him toward the next vital step. At the first opportunity he procured an Ordnance Survey map of the Avebury/Silbury area, and copied his Cydonia map accompanying the video tape onto a separate piece of paper. Next he xeroxed the English map, very carefully reducing its scale, until the center of Silbury Hill and the center of Avebury Circle were exactly the same distance apart as the center of Tholus and the center of the Crater were on his Cydonia photo/map. Finally he produced a clear plastic overlay of his scaled map of the English countryside.

Taking a deep breath, and anticipating the results, he laid the plastic map over the Cydonia photo. Now that the relative distances of scale had been matched, the *relative sizes* of the structures fit also. What Percy found was astounding: Avebury perfectly covered the rim of the Crater, and Silbury fit exactly over the Tholus. (See back cover and fig. 3) The implications were clear: Avebury/Silbury could well be an Earthly analog for the Martian Crater/Tholus, recreated in a scale of approximately seven percent of the original. (This is all the more overwhelming when one stands in the vastness of the Avebury circle or on the heights of Silbury Hill and realizes that the structures on Mars are 14 times larger.)

Armed with his findings Percy presented these initial hypotheses to *TMM* last September at a meeting held in the Bay Area. The tremendous inferences offered by this

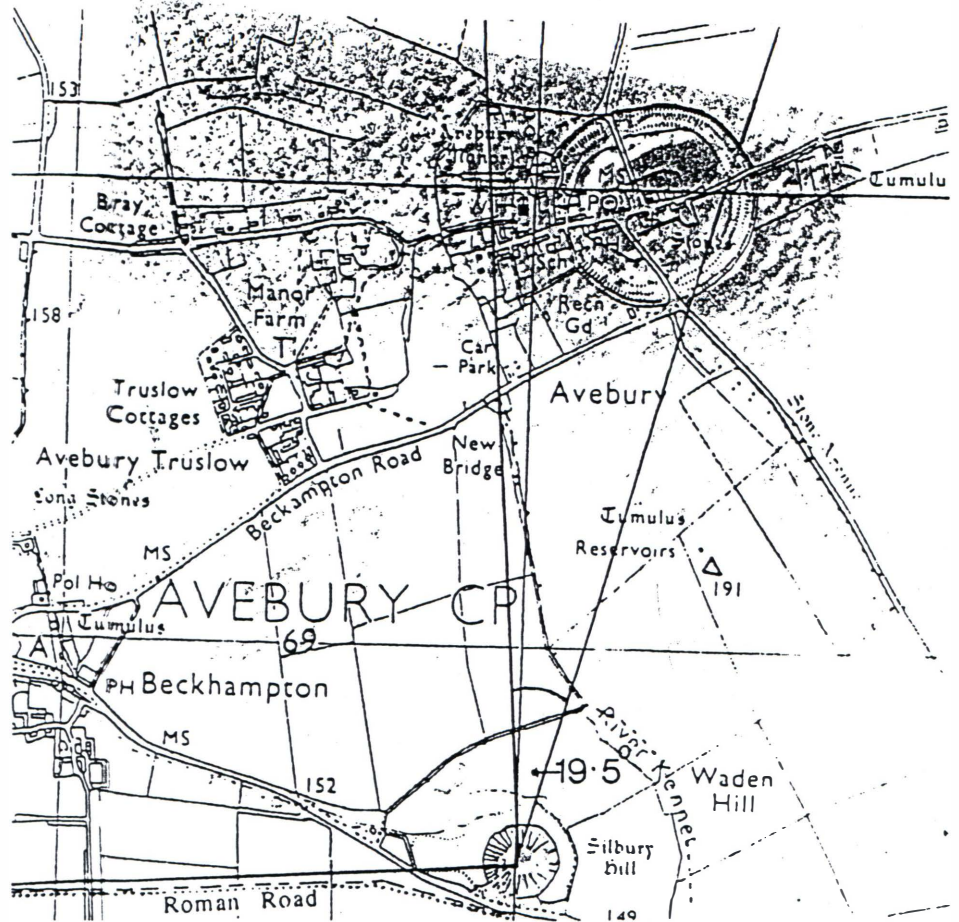


Figure 3: Avebury/Silbury Superimposed Over Cydonia Crater/Tholus

possibility were immediately grasped by the stunned group, and it was decided to launch a field investigation as soon as possible -- to not only verify what Percy had found, but also to try to locate any other parts of Cydonia that might have been reproduced in England. Following intensive preparations this mission was accomplished during early December 1991, when *TMM*'s David Myers flew to London and accompanied Percy on a five-day expedition in and around Avebury/Silbury. The following section of this article describes the amazing findings of those days, which have served to strongly substantiate Percy's initial hypothesis.

The field work actually began at Stonehenge, some 17 miles south of Avebury, and at Glastonbury, 35 miles west of Stonehenge. This was partially due to the special permission entry date and time given to *TMM*, and also because there may

be an even larger replication of Cydonia in England, an idea based on information that surfaced during preparation for the investigation at Avebury/Silbury. This concept will be discussed at length in our Spring issue.

It was obvious to both Percy and Myers that the real place to start was Avebury, to determine if there was additional evidence in that area to link Mars and Earth. The two points of focus would be the search for the Cliff and for an analog to the Tetrahedral Pyramid on the Crater, which at Cydonia forms the key 19.5 'tetrahedral' angle between Cliff and Tholus. (The 'Cliff' at Cydonia could now be called the Wall or Berm, as these are more accurate descriptions, but the historic nomenclature is retained to avoid confusion.) They began with the Cliff.

Perhaps even from its beginning a village has been associated

with Avebury. At some point a large arc of the western earthen wall of the circle was demolished, and the inner ditch filled. Houses and other structures were built within the circle; today the post office, a charming pub, and other buildings stand at its very heart. But the main part of the town, at least as far back as Saxon times, lies to the west, squarely over where any analog to the Martian Cliff might have been.

Myers had noticed something in an aerial photograph, however. At the very northern limits of where the Cliff might have been was a linear depression in an open field. After assuring themselves that a search further south in the heart of the village would produce minimal results due to the overlay of modern structures, the two headed north.

The field, attached to the government-owned historic Avebury Manor, was just as they had suspected it would be. Directly in line with the hypothetical projection from Silbury, and in accordance with the scale of the overlay, was a low, badly-silted ditch and evidence that there had been a dirt wall on at least one side. Moreover, at the location where the Cliff should end, this depression began to curve slowly back toward the ancient circle before petering out in a short distance, just as the foundations of a substantial structure might do. (fig. 1, foreground right)

It should also be noted that just west of Avebury village runs a small branch of the Kennett River, which flows down toward Silbury Hill, approaching it roughly along the important alignment extending south from the Cliff's location. Upstream, it clearly defines the separation between Avebury village and the fields beyond; its location is strikingly on line with the farthest westward projection of the base material of the Cliff. Is it just coincidence that a river should be so conveniently placed?

As the two departed the area, they were stopped by an employee of the Manor, who turned out to be an archaeologist. When asked about this queer depression in the ground

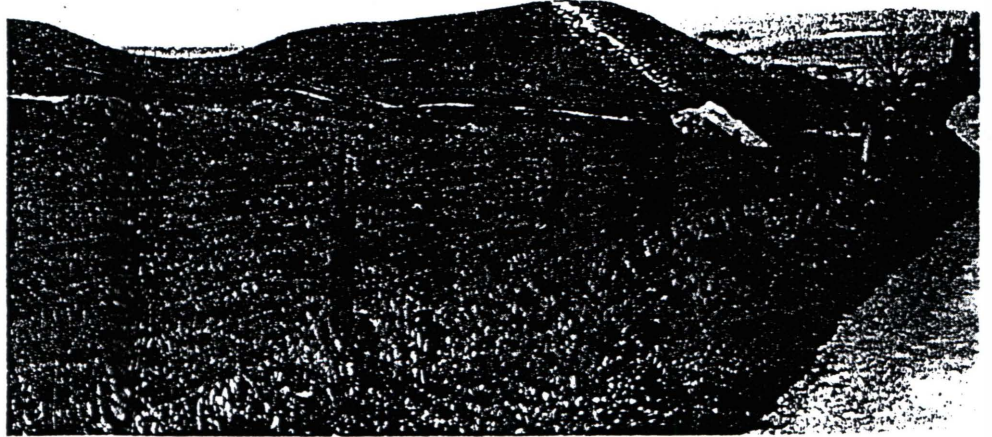


Figure 4: Mound on Rim of Avebury Circle Serving as Analog to Tetrahedral Pyramid on Crater at Cydonia (from interior)



*Figure 5: 'D&M' Mound And Stone Stele
Silbury Hill, Background Right*

herespondedgleefully: "Oh, we know about that. We believe it was the north-south road of the ancient village. We have traced it under the existing town to where it stops just before the car park."

His statement confirmed two things: that the 'Cliff' was indeed an ancient structure, and that its length was correct if it were intended to be an appropriate analog to its Cydonian counterpart, as his description of where it ended was precisely as it should have. The ditch and wall may have indeed been a road as the archaeologists surmise, but they may also have had another important — and perhaps more subtle — purpose as models of the Cydonian Cliff.

The presence of something similar at Avebury to the Tetrahedral Pyramid at Cydonia would be crucial. Although the walls of Avebury undulate slightly up and down they are basically of uniform height, though they contain sharp breaks which were made in ancient times for the four entries. There is only one exception to this, one that is easily recognizable to the human eye, and one which is clearly marked on the diagrams and maps. That is a much higher, peaked mound which is clearly separated from the adjoining wall to the north by a clear dip and from the south by the sharp cut forming the east entrance. It lies at *exactly* the spot where the Tetrahedral Pyramid at Cydonia is positioned. (fig. 4) (Further photographic analysis of the Crater indicates a break in its rim just below the Pyramid as well.)

This had been suspected by prior photo analysis of Avebury, and was confirmed by on-site inspection. The mound which had been seen in the pictures is totally unique at Avebury, and it lies at exactly the right spot to be the earthly analog for the Tetrahedral Pyramid on Mars.

From atop the mound it is not possible to see Silbury Hill due to an intervening ridge; but there is another marker in between to insure the alignment. This is a large stone located just outside the south entrance to Avebury Circle, named by

Percy and Myers the 'Tangent Stone.' Although quite conspicuous for its size and solitary location, no mention of it was found in any reference book, though other significant markers have such colorful names as Devil's Chair, Swindon Stone, Ring Stone, etc. What the team found, however, is that it lies directly on the line between the mound on the rim of Avebury Circle and Silbury, thus reaffirming that important relationship. Later discoveries showed that the Tangent Stone seems to have other roles as well (discussed below).

So far Myers and Percy had found only what they had really expected. The overlay had shown the clear relationship of Avebury/Crater and Silbury/Tholus. Photo map study predicted the finding of traces of the Cliff and Tetrahedral Pyramid, and on-site inspection confirmed both. Now it was time to move into the unknown, to the areas to the west where there would hopefully be at least some evidence of the three other most significant Cydonian features: the D&M Pyramid, the City and the Face. The team visited those areas next, in that order.

The overlay had proven to be amazingly accurate, so it was not difficult to locate the sites for the

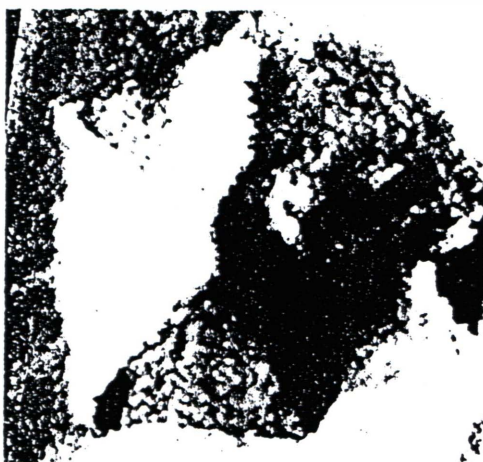


Figure 6: D&M Showing 'Buttress Entryway' at Lower Left Just Above Southwest Corner and Directly Opposite the Tholus

Martian monuments in the English landscape. Percy and Myers parked their car just off the road to Devizes and walked along an ancient Roman road, which extended behind them directly to Silbury, clearly visible in the distance. The way led up a long, gentle hill and the team immediately noticed what was before them near the crest: a significant earthen mound surrounded by a copse of trees, the only break in the fallow fields for a least a mile in any direction. It literally stuck out like a sore thumb and must mark the D&M, they thought. When they approached even nearer they saw something else: an upright stone stele protruding from the top of the mound. (fig. 5)

Disappointment soon set in, however. Though the marker was directly on line with Silbury to be the apex of the D&M, it was too far. This was confirmed by not only pacing the distance from the road (which could then be measured against the map), but also because the alignments with visible landmarks at right angles to Silbury were not correct. Astonishingly, some of the trees around the mound had been planted in a straight line over its top, with a space left for the stone marker; but they didn't line up with the far side of the D&M either. The mound was beyond the site of where the great pyramid should lie; but it seemed inconceivable that such a clear marker, made highly visible by the trees planted around it, should not have some correspondence to the investigation. This was especially true since everything previously sought had been found. The team simply concluded there was something that was as yet unknown, and made its way back down the hill, past the totally unmarked site of the D&M.

Fortunately, a possible solution was found in London when Percy and Myers were able to study newly enhanced photos of the pyramid, looking specifically in the area to the west of the D&M, directly on the line extending through it from the Tholus. (fig. 6)

They were totally astounded by

what they saw: There, reaching far beyond the actual slope of the D&M was a kind of slanting buttress, similar to those at the D&M's corners, but less bulky. Could this have been a ramp and gigantic entryway into the D&M? If so, then the mound the team had found could very well mark the door to the pyramid. Regardless, there really is something of significance at Cydonia corresponding to what is extant at Avebury.

In the meantime, they set their sights on the City, driving out the Bath road, and parking near another copse of trees, which also curiously mark the eastern edge of the Fort. From that vantage the mound and trees of the D&M are clearly visible to the south, as are the open fields where the Face would lie to the northeast.

The way led again uphill and through the trees along a ridge where the old road to Bath had once been. Beyond the trees the ridge grew more pronounced, sloping gently to the north on the right, but steeply south to the left — toward where the overlay said the City Center should lie. Upon reaching the highest crest, the team was able to survey the entire scene, and did so with great awe:

Before them lay a gigantic U-shaped amphitheater, almost as if it had been sculpted out by intelligence. In the center was an enormous and beautiful plowed field, appearing almost completely flat (but actually crowned like a football field). Around three sides were steep hills; the open end looked back toward Avebury and Silbury. After consulting the overlay and comparing it again with the landscape, Percy and Myers concluded the obvious: the hills to the north, west and south corresponded exactly with the pyramids of the City, and the field in the center to the area of the City Center.

Emphasis was added when a large mound was found on the northern ridge, despoiled by a World War II gun emplacement. Its location; however, is on the exact site of a Martian pyramid which lines up directly through the City Center to the apex of the D&M. (fig. 7) Stand-



Figure 7: 'City Center' Looking Southeast Toward the 'D&M' (Copse of Trees, Right Center) From Base of Mound on North Side of City

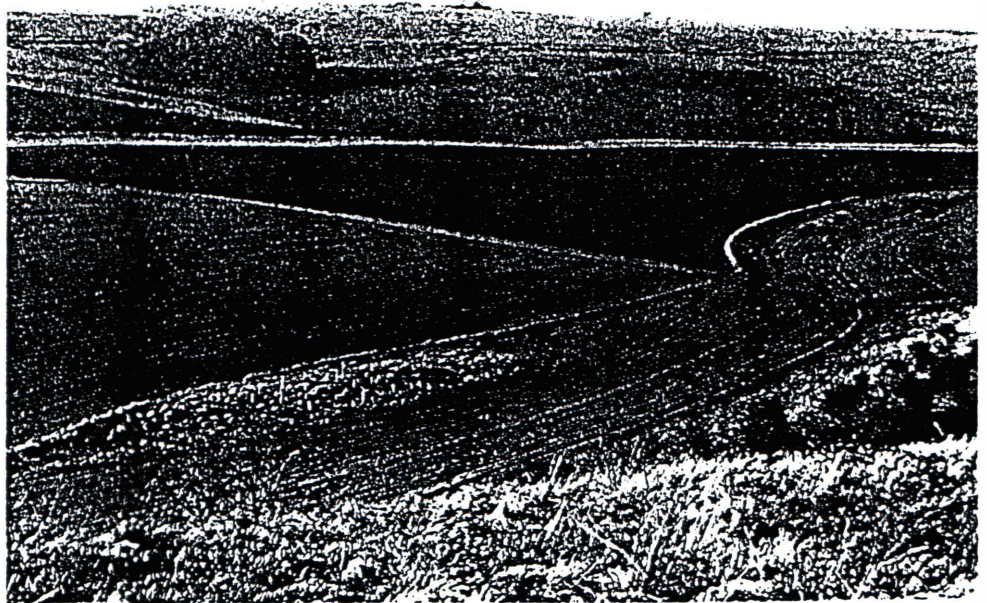


Figure 8: 'City Center' Looking Southwest. Foreground Is Northwest Oval-Shaped Area Corresponding to Northwest Building in City Center at Cydonia

ing atop this mound in the growing doom of dusk (4 P.M.!) and looking across the field in the valley before them to the copse of trees marking the D&M, the pair was overwhelmed by the beauty and majesty of the sight. It almost seemed as if they had been transported across time and space to Cydonia itself...

It was only on a second visit to the City the following day and in bright sunlight, that an incredibly stunning discovery was made: the City Center had been marked as well. Near the northern edge of the field, but clearly part of it, two greatly elongated oval shaped areas had not been plowed or planted, but grew instead with unkempt grasses. Another check of the overlay showed they were in the exact spot of the two buildings which make up the northern half of the City Center at Cydonia. (fig. 8)

Bounding down the steep side of the amphitheater the team rushed to the site to get a better look, and found another surprise: within the two ovals stood a group of small trees, also planted in the same oval shape! What was going on here? A farmer had deliberately not plowed an area of his rich field for no obvious reason (to be inquired about next time), and then had planted seedlings (probably a couple of years before) within these areas. And in the scale model of Cydonia on the English countryside, these areas corresponded exactly to two of the four buildings in the City Center. In London the team also found on the enhanced photos that these buildings are clearly not pyramids, but are greatly elongated in the same orientation as they are at Avebury. They seem to be hexagonal with two long, and four short sides opposite.

Having clearly found either scale models or indicators inferring all five of the major Cydonia landmarks sought so far in England, the team already considered its mission a success. The only one left now was the Face, but Percy felt they would find nothing; it would be too conspicuous in the middle of an average field of grain. Besides, he had made a brief look for the Face in October and had

found nothing. Myers demurred. "Let's have a go at it straight away," he added, in his newly-acquired British idiom.

Instead of approaching the field where the overlay said the Face would be as Percy had done previously by the lane closest to the chin, the team circled farther north off the main road to a point above the crown of the head. There they parked near a barn containing hundreds of squeaking (and cute) piglets. Realizing they had gone too far they walked a short distance west along the road, coming to a point where a dirt track led off into the field to the left.

Myers consulted the overlay. "It looks like this tramline exactly bisects the Face into left and right sides. I don't see anything, but let's walk into the field anyway." As they proceeded down the muddy way the sun was setting to the southwest nearly in their faces, a perfect backlight to the field of short green grass.

Suddenly the pair stopped. What they saw amazed them. Although the field was generally perfectly flat, three slight rises forming mini ridges ran at right angles to their path. Could these subtle features in the ground somehow mark the Face? Excitedly, they compared the apparent distances on the ground to the overlay, and then paced out where the ridges actually lay on the field. The results were undeniable: the first rise was right where the eyebrows should be, the second the mouth, and the final the point of the chin. Could this be? (Color photos taken show the features clearly, but cannot be reproduced here due the black-and-white format.)

Scientifically, this hint of the Face is impossible to prove, but given the other evidence already uncovered, a circumstantial case can be made. Random acts and coincidences are certainly possible, but when they occur together and with frequency they point toward design. A few trees planted here and there are acceptable; when they appear at each point acting like geodetic markers, one gets suspicious.

"The most amazing thing," con-

cluded Percy, who is among other things a professional film maker, "is that we came at exactly the time of day when the sun is a perfect backlight, allowing us to notice the ridges. If we had come during the growing season, the height of the grain would have completely blotted out the subtle features of the ground."

Having concluded the search for the major objects at Cydonia in the Avebury area, the team left the field — reeling from the implications of what they saw. The results were far more conclusive and dramatic than anticipated, and they feared this 'special time' could never be conveyed to others — especially through film or print.

Along the way they again passed through the roundabout (traffic circle) at the village of Beckhampton, complete with ancient mound in its center. That reminded them again of the many other hints of correlation between Avebury/Silbury and Cydonia, found especially in the English roads that follow ancient tracks from time immemorial.

The four roads all form *tangents* with the most significant features on the landscape: the south corner of Silbury, the south rim of Avebury (at the Tangent Stone), the south-east corner of the D&M, and the northeast corner of the City and Fort. And if there is anything to be learned from Cydonia, it is that tangents are somehow important. The roads all meet at the Beckhampton roundabout, as if it were a switching station to visit one or other area of the complex. They wander a little, but when straightened their crossing is still exactly at the traffic circle, forming two large and two small angles, the latter being 49.6°, or $e / \text{radians}$, referred to in previous journals. On the Martian landscape, a small marker — perhaps a pyramid — stands directly on the same spot.

As Indiana Jones the adventurer admits, shrugging his shoulders, and contrary to his dictum as a college professor, "X marks the spot."

Within the area of the Avebury/Silbury complex are many more mounds, barrows and other ancient

earthworks. It was not possible to explore them all, or to try to correlate each to a known Martian landmark. But at least two — the Beckhampton Long Barrow (some 100 yards north of the roundabout), and the so-called Adam and Eve stones (a short distance farther to the northeast) — correspond remarkably with other minor markers on the Martian surface which TMM has long believed are significant because they lie under the lines drawn between major points.

Southeast of Silbury is an important ancient monument called the Sanctuary, which lines up beautifully with the Cydonia overlay through its relationships with Silbury and Avebury. The photos of Mars which have been studied by TMM do not include this area, but it would now seem reasonable that once they are available, there should be a Martian analog to the Sanctuary. Science is nothing if it is not prediction.

Perhaps most interesting of all is the location of the Avebury church. Although there is now no readily observable Martian analog, the church does lie exactly halfway between the Crater and the Cliff, and exactly halfway on the north-south axis of the Cliff. On Mars that would be somewhere in the outflow of the Crater, and even the best enhancements cannot distinguish any features there. But archaeology teaches that churches (and other religious sites) are traditionally built on previous such sites, which were chosen for some reason not apparent to modern man.

A hint about Avebury church's location may be provided by the fact that it lies exactly $\frac{4}{7}$ ths of the way from the equator to the north pole. Livio Stecchini, in his appendix to Peter Thomkin's *Secrets of the Great Pyramid*, points out that Delphi and Egyptian Thebes lie at $\frac{3}{7}$ ths and $\frac{2}{7}$ ths — perhaps as part of some ancient grid system.

The team also noticed a curious thing about the internal alignment of the church. The aisle and altar do not line up with the each other and an ancient and elaborate font which stands on a pedestal under the western spire; the church seems all crooked inside. Further investigation by Percy and Myers, however, shows clearly that they are aligned instead with the southern edge, or *tangent*, of the font. A recent speculative metaphysical book predicts that the age of true enlightenment will begin at this very font. (fig. 8)

This article is appropriate only for the journal of *The Mars Mission* because familiarity with the enormous background material of the investigation of the Cydonia complex is assumed. It could also have been written in a much more straightforward, scientific style, but in doing so it would have lost the sense of discovery that Percy and Myers felt, and the growing awe within them as one success followed another. Even so, it is extremely difficult to fully convey that in this type of report, but hopefully the readers will get something of it. Events have been telescoped, and many more details omitted. There will certainly be follow-up field investigations, articles, and perhaps a book or video telling the entire story.

TMM does not make any claim to know the date, the methods, the constructors of the Avebury/Silbury com-

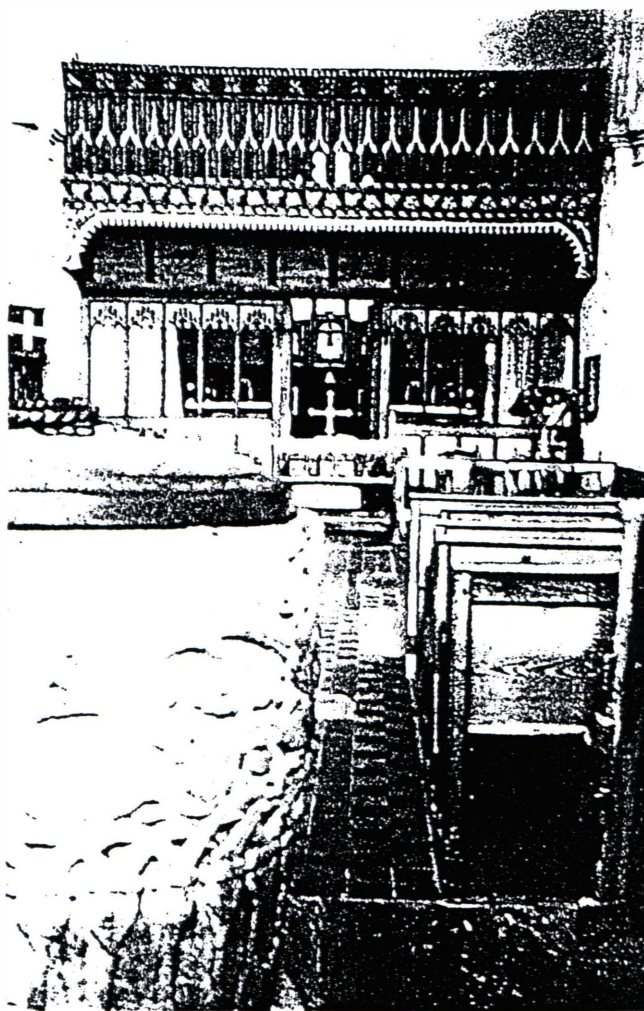
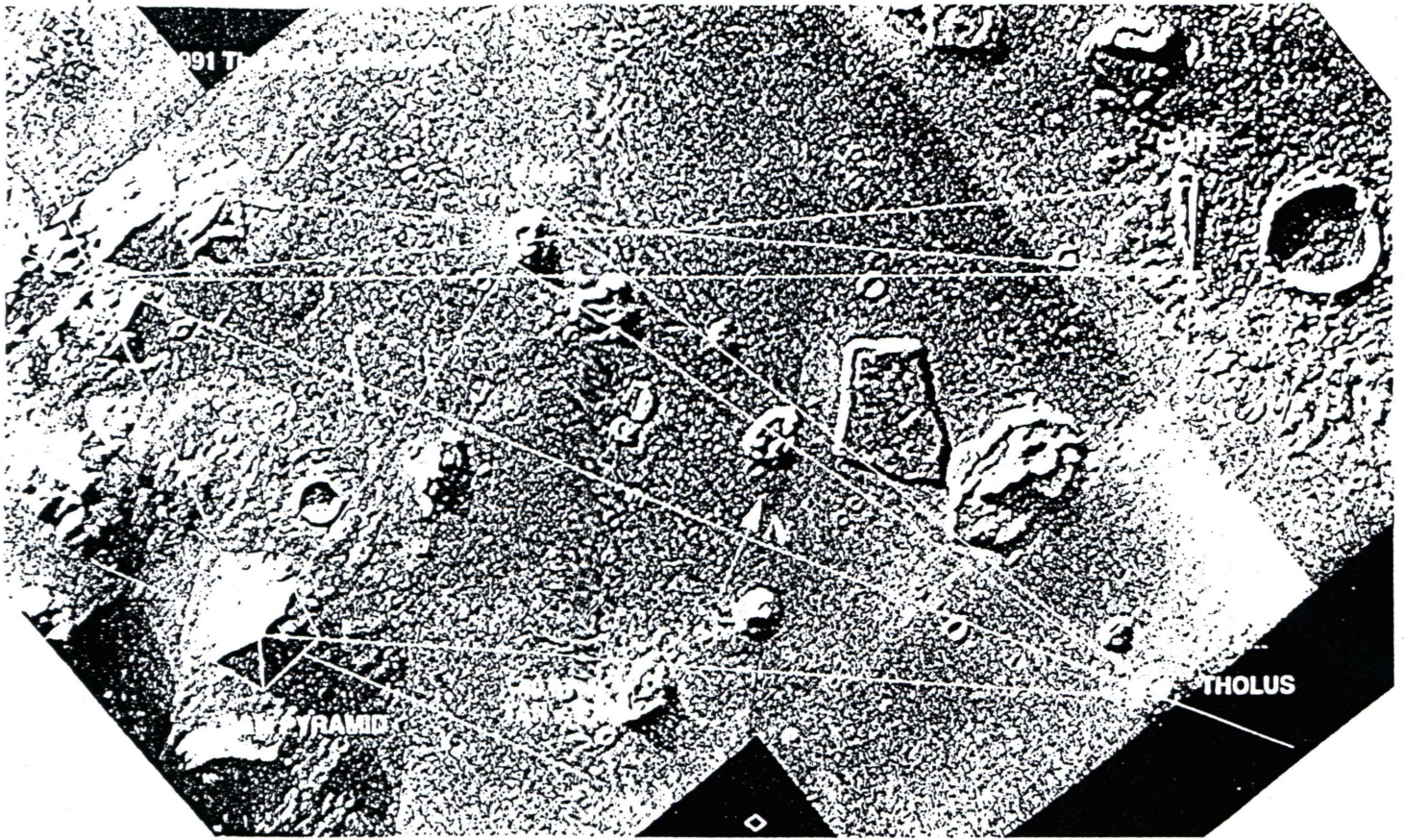


Figure 9: Avebury Church. Font in Foreground Aligned On Right Side with Aisle and Altar

plex, nor their conscious reason for building it. These remain, at least for the present, as mysterious as before. What is obvious now; however, is that at some level of design these structures were clearly intended as a scale model of their Cydonian counterparts. If this is true, it is clear there is a specific and important link between Earth and Mars.

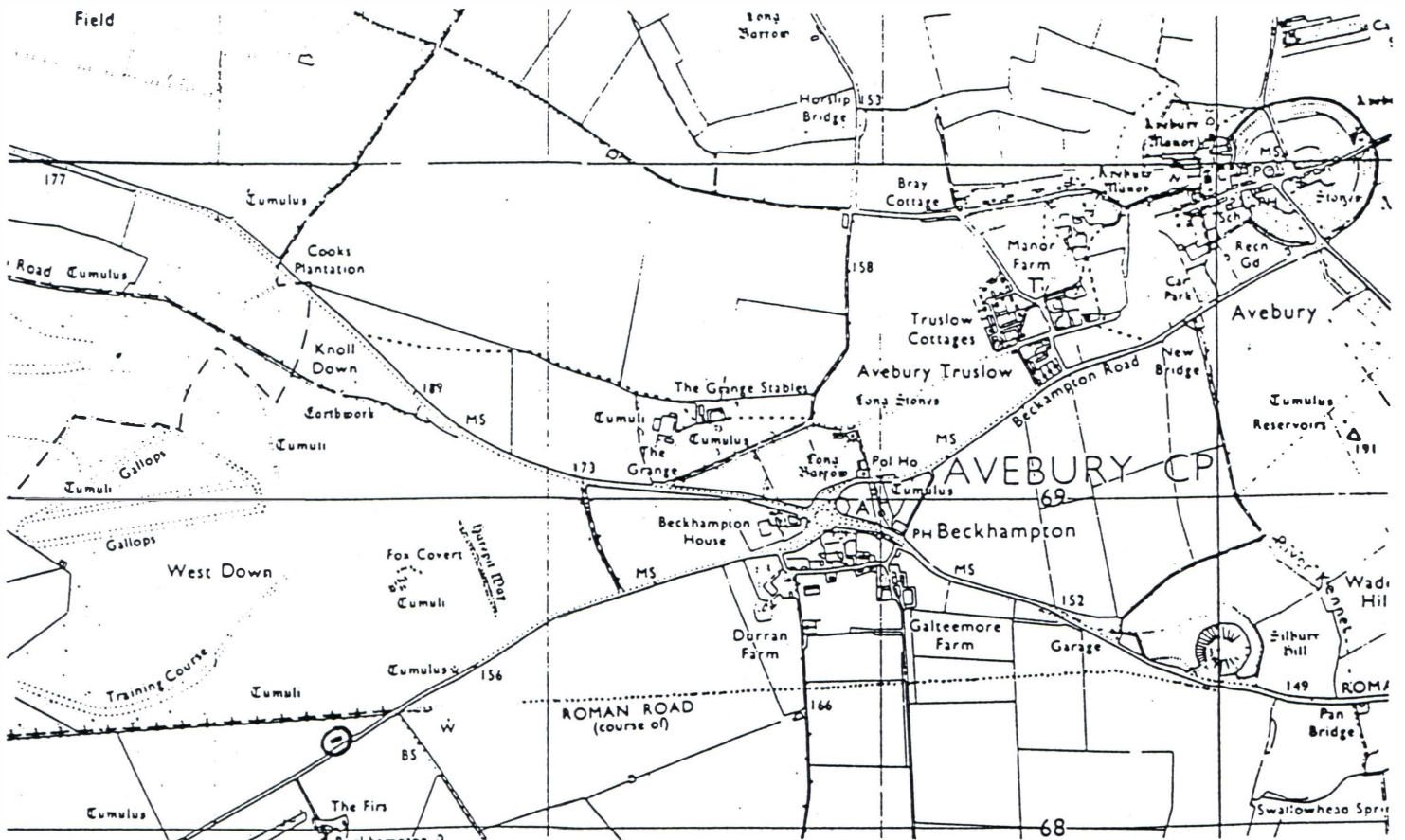
The clearest hint of this connection between Cydonia and Avebury/Silbury was given to us by crop glyphs. These formations not only point to a mathematical and geometric correlation between the sites of ancient England and Cydonia, they occur most frequently in the specific area investigated. Has some contemporary and unknown intelligence been trying to point us toward Avebury/Silbury, encouraging us to find something important there in a scale model of Cydonia?

Skeptics may dismiss all these findings out of hand, just as they have the entire study of the Cydonia complex. We are participating in pseudo-science, they may say. But to them *The Mars Mission* responds: Go to Avebury and Silbury with an overlay and test the data. Better yet, insist that NASA fully reimages Cydonia to test the data. If the skeptics are not prepared to do these things, then perhaps they are the pseudo-scientists!



Rectified Cydonia Mosaic and Avebury area map suitable for creating an overlay.

(At copy shop, xerox map onto clear plastic, align Silbury over Tholus & circled dot at north edge of road above *The Firs* over S.E. corner D&M.)



Stonehenge, Great Pyramid, and Teotihuacan: Coincidence Squared?

-- Carl P. Munck

It is written, in fact it is very well written, that our primitive ancestors were ignorant semi-savages. To back up this record, our museums display a wealth of crude projectile points, hand-made pottery, and other prehistoric implements.

Yet we have failed absolutely to explain why they built over 80 pyramids in Egypt, over 100 in Japan, thousands more throughout Central and South America, and over 10,000 mounds in North America — not to mention the thousands of effigies, geometric earthworks and other curious goodies such as Stonehenge.

We like to consider ourselves far superior to these ancient builders, but our failure to explain their pyramids places us in a most embarrassing position. How could they have outsmarted us?

Is it possible that we have failed to consider these works from *their* perspective? While we often claim that this would involve paganism, something that we should shun, suppose we are wrong? Is it possible that our logic and methodologies are insufficient to deal with this question?

Let's take another look at Stonehenge, for example. (fig. 1) The spooky like to perceive it as a mystic place, perhaps even evil. Historians see it as a place of pagan ceremonials, and archaeoastronomers believe it to have been a very early 'sundial' or even a calendar. There is little or no agreement.

We moderns are logical people, are we not? We like to think so, but in fact, there are times we fall short of logic because we suffer under a wealth of hang-ups which can blind us. For example, if the archaeoastronomer who visits Stonehenge is preconditioned to the idea that the builders there knew nothing of mathematics or astronomy 4,500 years ago, s/he would not be

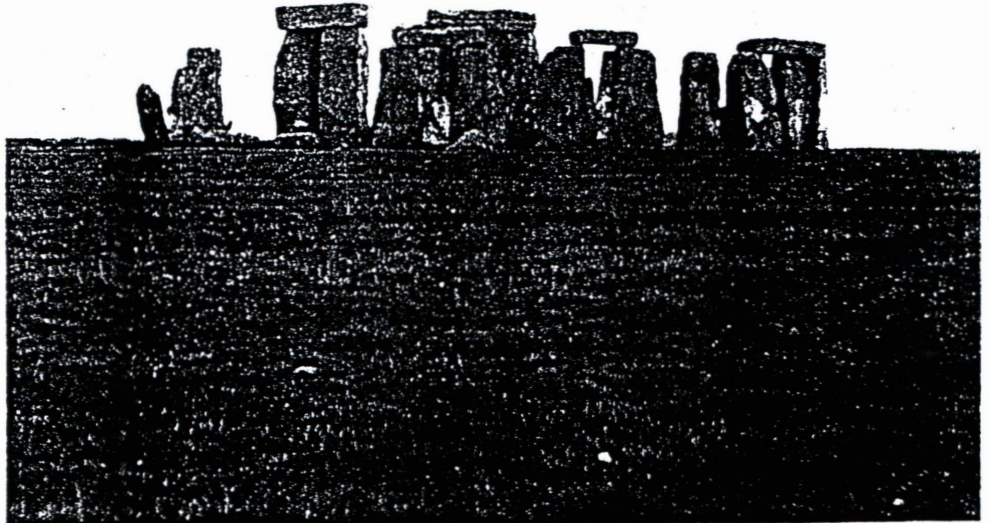


Figure 1: Stonehenge As It Appears Today
TMM Photograph, December 1991

apt to even look for evidence to indicate that they did. The people of that era were ignorant, and that's all there is to it: ask the nearest archaeologist.

Some of the best Western minds have pondered and studied Stonehenge. Conclusion: unknown.

'Primitive' — Webster gives several definitions for the term: crude, rudimentary, self-taught, untutored and even naive, but what it means in essence is that when the builders there arranged the great circle of stones, they were unaware that the circle is a 360-degree geometric. It was just a circle, and the only reason they used 60 stones in forming the perimeter was because it may have been a 'favorite number.' Other than this, it had no real meaning. It isn't even certain that the number was even known.

But, there's a serious problem with these two numbers at Stonehenge. When they are multiplied,

they become 21,600, a value which can be divided downward:

$$21,600 / 51 / 10 = 42.35294118$$

Is it only coincidence that a parallel of latitude drawn at 51 degrees, 10 minutes and 42.35294118 seconds (51° 10' 42.35294118") just happens to run right through the center of Stonehenge?

Coincidence No. 1.

How are we to debunk this? The math is flawless, I lifted the latitude of Stonehenge from an official British Ordnance Survey map (Pathfinder No. 1221), and I am not about to question the map because they don't come much better.

Is it possible that this math shown by Stonehenge was deliberately incorporated in order that a visitor could quickly determine exactly where s/he was with respect to the equator? It *does* work.

Stonehenge is in ruins today, but imagine yourself on the scene

when it was intact. You are walking toward it, still at some distance, and you see it looming before you. (fig. 2)

You are still too distant to count the individual stones, but what you see distinctly conveys one number to you: 'Two.'

Two separate displays — lintels and supporting stones. Upon reaching the site you count the individual stones and find 60 on the perimeter and 15 more in the central 'horseshoe' arrangement. (fig. 3)

Two, 15, and 60 -- how do they relate to each other?

If you are a hung-up modern, they don't. The builders were primitive and numbers had no significant meaning.

Stonehenge was a center of ritual and we will never figure it out.

But, way back 4,750 years ago, someone did understand, and I cannot but wonder if they knew that the only way two, 15, and 60 could relate to one another is by way of square roots:

$$\text{sq rt } 15 (3.872983346) \times 2 = \text{sq rt } 60 (7.745966692)$$

Here again, the math works, but did they realize it? Coincidence No. 2.

Englishman John Taylor, over a century ago, calcu-

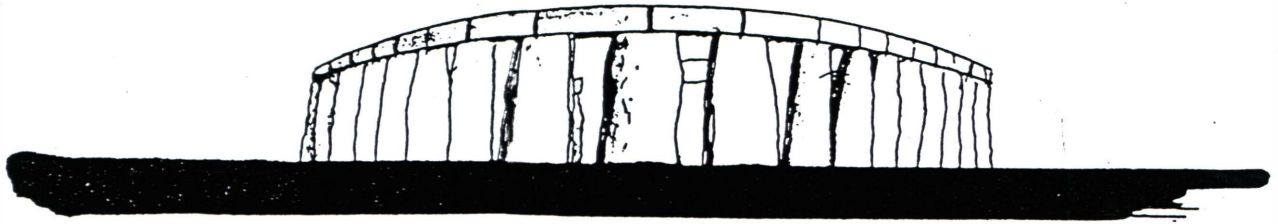


Figure 2: Artist's Conception of Approach to Stonehenge in Ancient Times

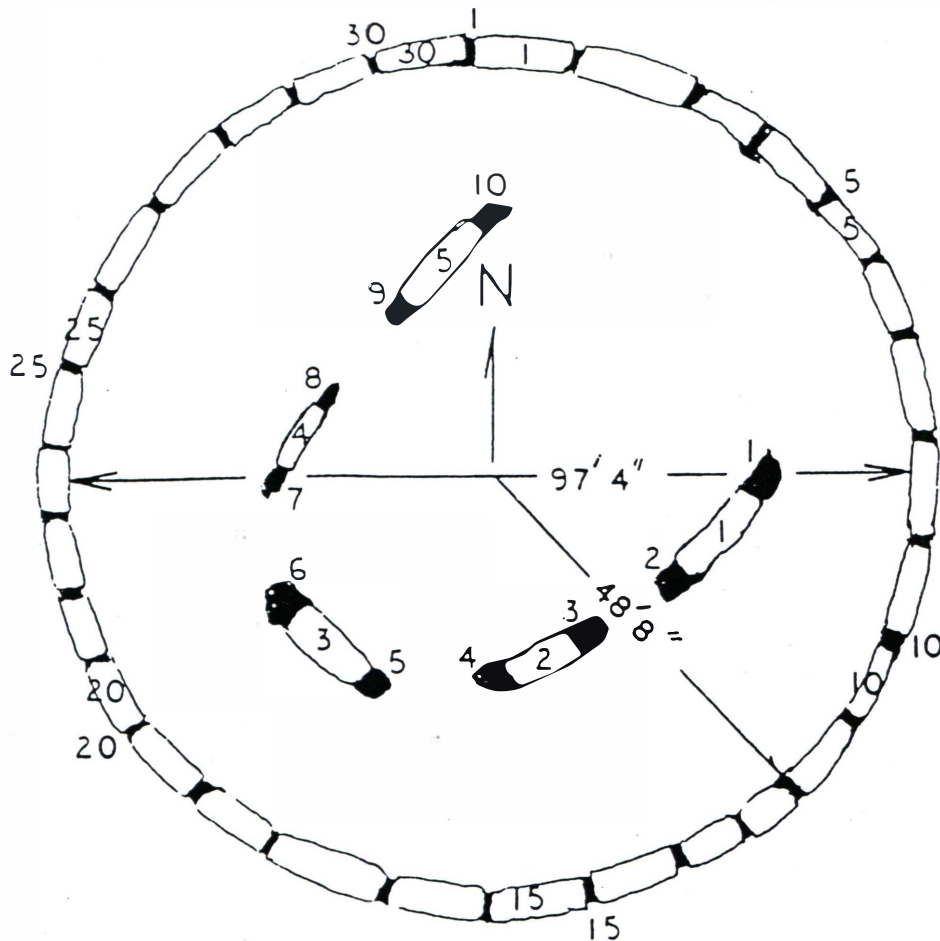


Figure 3: Stonehenge Plan According to Archaeologists. Depicting Upright Stones and Lintels (c) Carl P. Munck, 1992

lated that the circumference-to-height relationship in the Great Pyramid was double- π (6.283185307). If it were true, it may also be safe for us to guess that they who built Stonehenge were equally familiar with this mathematical constant. It may indeed have been true because of what happens to double- π when it is introduced to the square root of 60 offered by Stonehenge:

$$2(\pi) \times \text{sq rt } 60 = 48.66934411$$

What does it mean?

When Atkinson and Hawkins investigated Stonehenge they found that the great stone circle (known as Sarsen) had a diameter of 97 feet 4 inches (97.33333 feet), hence a radius of 48.66666 feet.

The difference between their field measurement for a radius of 48.66666 feet and the 48.66934411 figure which yields from square root 60 and double- π is *less than a quarter of an inch*.

Is it possible that these ancient builders used this math to explain an aspect of their metrology, specifically a ancient use of our modern 12-inch foot? If so, then what did this unit of length represent?

Coincidence No. 3.

The diameter, based upon this suspected radius, would have been 97.33868822 ft. What was its function?

The 35 lintels at Stonehenge were originally held aloft by 40 upright megaliths. If we examine the central horseshoe carefully, we see that its five lintels *could* have rested upon six stones, but they spread them apart thereby requiring the use of ten supports. Forty was the number conveyed:

$$\text{Diameter } 97.33868822' / 40 \text{ upright stones} = 2.433467206$$

It doesn't look familiar, so what is it? It is right here where the non-curious would be apt to pass on it and go on to something else, but when I tested this figure against the *grid* latitude of Stonehenge (21,600), I found this:

$$21,600 \times 2.433467206 = 52,562.89164$$

Another figure which conveys no particular meaning — until it is divided as follows:

$$52,562.89164 / 32 / 57 = 28.8173$$

When our modern Prime Meridian is moved from Greenwich eastward and centered on the Great Pyramid at Giza, the center of Stonehenge will be 32°57'28.8173" to the west.

Is that just coincidence? If it is, it is No. 4.

If we term this figure 52,562.89164 the grid longitude of Stonehenge (which it certainly works out to), then it yields an 'echo' in a very ancient global grid system because it also divides down as follows:

$$52,562.89164 / 43 / 21 = 58.209$$

On our modern U.S. Geological survey maps, a parallel of latitude drawn precisely at 43° 21' 58.209" north crosses *dead* center on the 65-foot-high conical 'Indian mound' at South Granville, New York. (fig. 4)

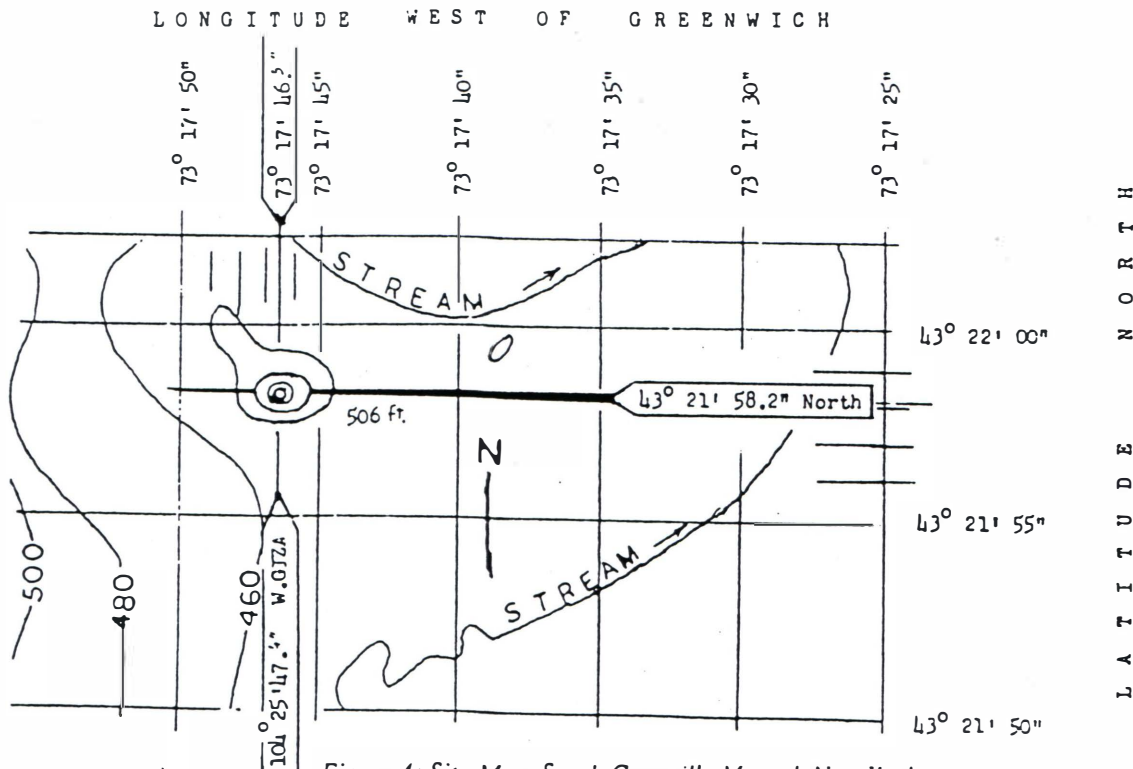


Figure 4: Site Map, South Granville Mound, New York
Enlarged from U.S.G.S. Map N4315 - W731517.5 W. Pawlet, NY - VT (1944)

We think of our native Indian mounds as nothing more than piles of dirt. The name 'pyramid' would not seem to apply. Yet, in the true geometric pyramid, each of its four faces shows 180° of corner angles, hence, 720° for the entire pyramid. Sitting on a square base, its bottom has 360° of corner angle hence a total of 1,080°. Were the Indian builders at South Granville cognizant of this fact? I have to wonder because when 1,080 is given to the grid latitude of this particular mound, it yields...

$$52,562.89164 / 1,080 = 48.66934411$$

There's that figure from Stonehenge again, its radius in feet, and the fact that its grid longitude answers the grid latitude of the South Granville Mound certainly suggests that the early New Yorkers knew quite a bit about Stonehenge far across the sea.

Or is this merely coincidence No. 5?

I can't help but wonder about this curious figure of 48.66934411 when I consider the grid vector (2.433467206). (Grid vector is the grid longitude divided by grid latitude.) It is precisely 1/20th of 48.66934411. Why? Perhaps it had something to do with the 40 uprights at Stonehenge; 30 on the perimeter and 10 in the center. When we subtract 10 from 30, we find 20,

Let's follow 48.66934411 and see where it might lead.

When it is multiplied by the square of π (9.869604401) it becomes exactly 480.3471728. This figure, unlike the others above, does look familiar for we know that the original height of the Great Pyramid was somewhere between 480 and 481 feet. It was lost when later Egyptians ripped away its mirror-like facing stones many centuries ago.

This figure of 480.3471728 does answer through a constant (π^2), the value 48.66934411 from Stonehenge — which certainly appears to convey a measurement in terms of feet.

Coincidence No. 6?

If 480.3471728 feet was the long-lost height of the Great Pyramid,

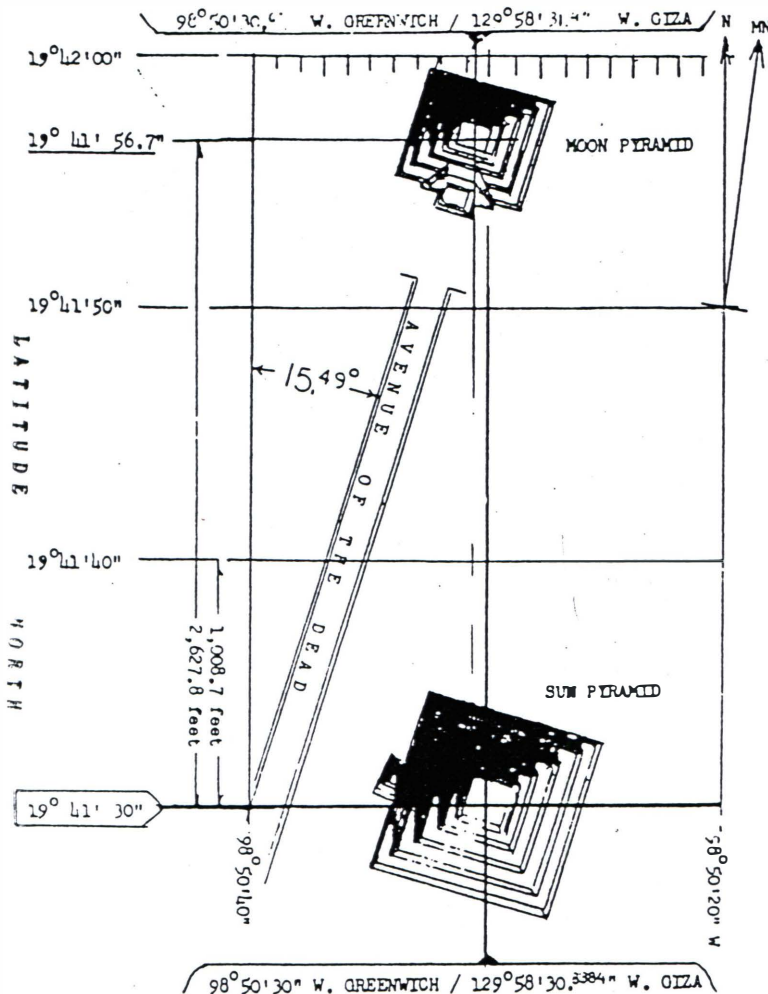


Figure 5: Site Plan, Teotihuacan, Sun and Moon Pyramids

what was it used for? What did it mean? When I square it, it becomes 230,733.4064, a figure which divides as follow:

$$\begin{array}{r} 230,733.4064 \quad / \quad 129^\circ \quad / \quad 58' \quad = \quad 30.83846651'' \\ \text{(variance) —} \quad \quad \quad 31^\circ \quad 08' \quad \quad \quad 00.8'' \quad \quad \quad \text{(Giza/Greenwich)} \\ \hline = \quad \quad \quad 98^\circ \quad 50' \quad 30.03846651'' \quad \text{W. Greenwich} \end{array}$$

On our modern maps, a meridian of longitude drawn at 98° 50' 30.038" west of Greenwich cuts right across the Pyramid of the Sun at Teotihuacan, Mexico. (fig. 5)

How are we to question that?

Coincidence No. 7?

Then, when I take this figure of 230,733.4064 which encodes the original longitude of the Sun Pyramid and divide it by the square of π (9.869604401), it becomes 23,378.18184.

$$23,378.18184 \quad / \quad 19^\circ \quad / \quad 41' \quad = \quad 30.010503''$$

Which by the strangest coincidence just happens to be the latitude of the Sun Pyramid, north of the equator. What are we seeing here? Is it a coded grid system, or merely coincidence No. 8?

Most fascinating is the evidence that there were certain checks and balances involved which enable one to derive second opinions, for example,

the figure of 23,378.18184 which encodes the latitude of the Sun. It has a square root whose value is 152.8992539, and when I divide it by π :

$$\text{sq } \pi \text{ } 23,378.18184 / \pi = 48.66934411$$

The same pesky figure from Stonehenge — it keeps on popping up. Even more curious is the subtle logic this grid conveys. The square root of the Sun's grid latitude, by way of pi, finds the 48.66934411-foot radius of Stonehenge in much the same way as the Sun's grid longitude was the square of the figure 480.3471728. Since the Sun's longitude answers the longitude of the Great Pyramid, it may be trying to tell us that 480.3471728 encodes the original height of this tallest of all pyramids — in feet.

Or do we simply give it all to coincidence No. 9?

Take another look at the site map for the Pyramid of the Sun at Teotihuacan. See that long street which archaeologists call the Avenue of the Dead? Its actual azimuth is 15.49193338 degrees. Multiply that by π and we find, again...

$$48.66934411 \text{ feet.}$$

Which, by the way, is also the difference between...

$$15.49193338 \times \text{sq rt } 15 = 60$$

Why were these distinctly Stonehenge values encoded in the azimuth of Teotihuacan's Avenue of the Dead?

Coincidences No. 10 and No. 11, or might it have something to do with another constant in π , specifically its cube?

$$\pi^3 (31.0067668) \times 15.49193338 = 480.3471728 \text{ feet}$$

Coincidence No. 12?

Earlier we saw how the square of 480.3471728 responded to the grid longitude of the Pyramid of the Sun. But when we divide the grid latitude of the Sun by 480.3471728, we find, again....

$$23,378.18184 / 480.3471728 = 48.66934411$$

Coincidence No. 13?

Then too, we have what happens to the Sun's grid latitude when we apply the square root of 60 from Stonehenge and double- π from the Great Pyramid:

$$23,378.18184 / \text{sq } \pi \text{ } 60 / 2(\pi) = 480.3471728$$

Coincidence No. 14? Isn't this coincidence in epidemic proportions? This is too much. It's the kind of massive coincidence that can drive the debunkers to the aspirin. Let's get out of here.

Where shall we go? How about checking all this with the Mayans? Let's go down to Tikal in Guatemala.

On the ancient maps, Tikal would have been roughly 120 degrees and 45 minutes to the west of Giza. How neat.

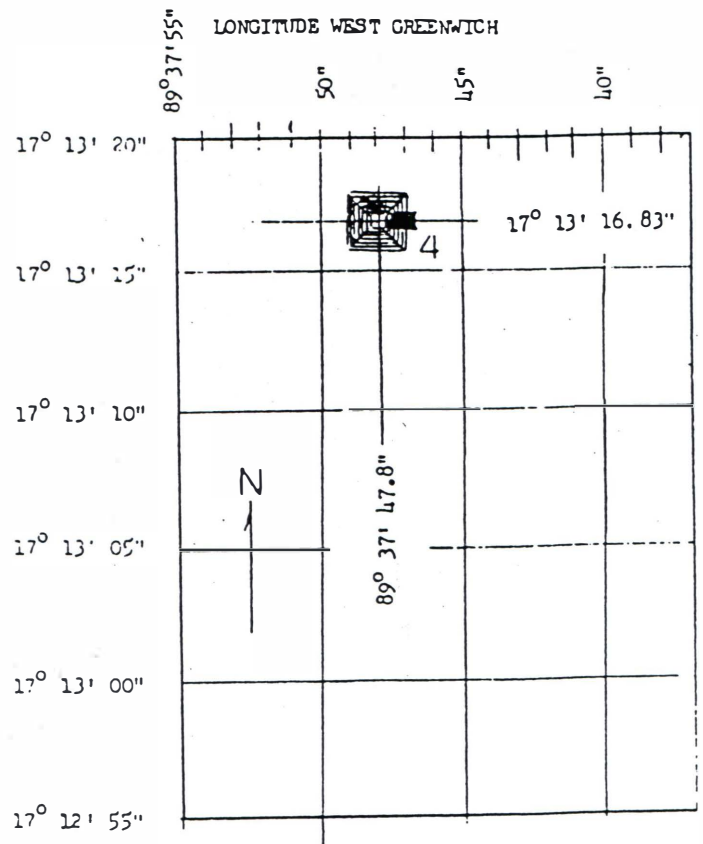


Figure 6: Modern Grid for Temple IV, Tikal, Guatemala
(Data Furnished by Getty Geophysical Company)
120° 45' 48.66934411" West Giza
- 31° 08' 00.8" Giza/Greenwich
= 89° 37' 47.86934411" W. Greenwich

The difference between 120 and 45 is 75; the total number of stones used at Stonehenge.

Stonehenge? What do you suppose would happen if we tacked this pesky number 48.66934411 on Tikal's vague longitude? It would then read 120° 45' 48.66934411" to the west of the Great Pyramid's longitude.

Wouldn't you know; it's right there, Temple IV, the so-called Temple of the Double-Headed Serpent, the tallest pyramid ever built by the Mayans, laughing at us from 120° 45' 48.66934411" of longitude. (figs. 6 & 7)

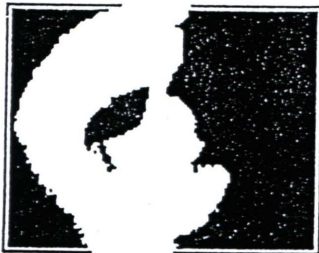
If you are up on your Maler (the most important archaeologist to work at Tikal), you can figure out why. If not, there's always part two in this series.

[Ed's note: Carl Munck is an independent researcher who became associated with *The Mars Mission* in early 1991 after he realized that the constants in his 'grid math' were the same as those we were finding at Cydonia. We would like to point out that the numbers 1080 and 2160 which appear in this article are also important as they are key expansions of 27, the number derived in the solution of the general cubic surface. This relates to *n*-space hyperspheres and is discussed in *MH* Fall 1991 in, "Cydonia's Hyperdimensional Connection." Carl continues his discussion next issue, introducing the other key Cydonia constant 'e', by way of the megalithic yard.]

"Virginia, your little friends are wrong. They have been affected by the skepticism of a skeptical age. They do not believe except what they see. They think nothing can be which is not comprehensible by their little minds. In this great universe of ours man is a mere insect, an ant, in his intellect, as compared with the boundless world about him, as measured by the intelligence capable of grasping the whole of truth and knowledge."

— Francis P. Church, editorial in the *New York Sun*, 1897, in response to a question about the existence of Santa Claus.

MARS 1993



Martian Horizons
Vol. 1, No. 3, Winter 1992

(c) 1992 -- All Rights Reserved

The Quarterly Journal of
The Mars Mission
P. O. Box 123
Danville, CA 94526
(510) 837-2529

Annual Membership
\$25 (U.S.) \$30 (Other)

Richard C. Hoagland, Founder
David P. Myers, Editor
Butler Crittenden, Publisher
Gary Gunderson, Marketing
David Percy, Director/Europe
Erol Torun, Research
Colette Dowell, U.N. Exhibit
Kynthia, Director of Exhibits
Susan Karaban, U.N. Liaison
Mark Carlotto, Banner Image

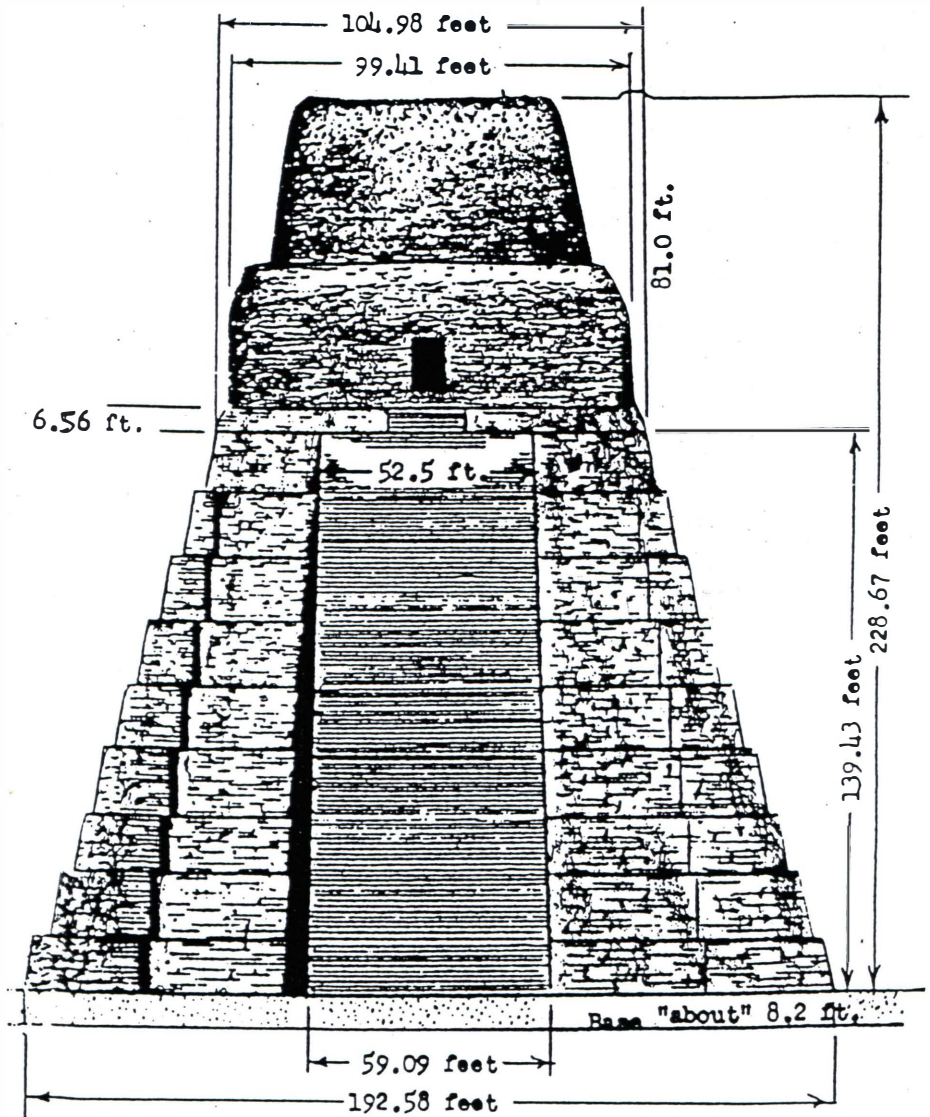
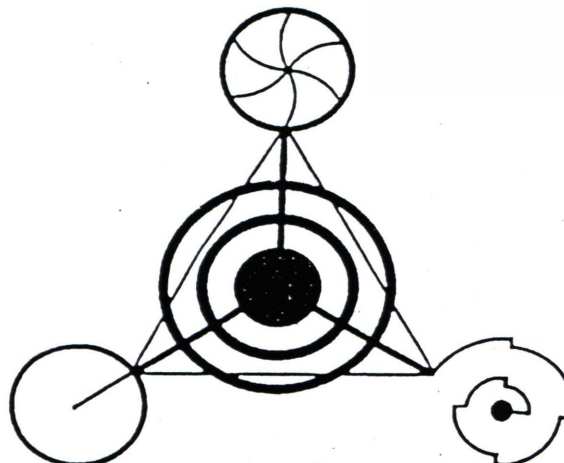


Figure 7: Plan, Temple IV, Tikal
The Temple of the Double-Headed Serpent



BARBURY CASTLE CROP FORMATION
(17:7:91) -- ENGLAND
as drawn by J.F. Langrish

Heavy Cotton
Twill T-Shirts
Short Sleeve
Black or White
Gold Silk-
Screen Letters
S, M, L, XL
\$15 --
Members
\$18 --
NonMembers

EDITOR'S CORNER: MISCELLANY

Welcome to the third issue of *Martian Horizons*. We have changed the format somewhat this time, including fewer pieces of longer length, due mostly to the importance of our lead article. We'll probably vary back and forth in the future, depending on the material we have to present.

In the meantime, you should be looking forward to our Spring issue in which we will expand on the English replications of Cydonia, and continue to discuss the linkage between Giza and the ancient British sites. *TMM* researchers Erol Torun and Colette Dowell will provide interesting new insights into crop glyphs, showing through shape and measure that they have a clear hyperdimensional component. Stan Tenen of the *Meru Foundation* will continue his series on ancient texts.

BOOK UPDATES:

The revision of *The Monuments of Mars* now has a projected publishing date of early April. Although the text has been complete and ready for production for some time, the delay has been caused by work on the exciting new graphics which are an important component of this edition. We appreciate your patience, and think that the wait will be worthwhile.

In the meantime, we have been distributing softcover copies of Mark Carlotto's *The Martian Engimas* since December to those of you who ordered them. The hardbound edition was delayed for some time at the printer's, but hopefully by the time you receive this journal, they will be on their way also.

The book is an incredible photo history of the Cydonia investigation, and includes many new 3-D perspectives that have never before been published. Carlotto's editorial comment is also significant.

In his remarks about the work of *The Mars Mission*, Carlotto writes: "While Hoagland and Torun regard their mathematical claims as the outcome of legitimate tests of their

hypotheses, critics view the claimants' approach as little more than a 'fishing expedition...' The skeptical point of view holds that sophisticated mathematics may be projected abundantly onto any random landscape if one searches long enough for points that may be arbitrarily deemed significant."

Carlotto contends this is "to misunderstand the actual sequence in which the claimants arrived at their observations. The record is clear on this point," Carlotto writes. "DiPietro, Molenaar, Hoagland and the others first established the existence of anomalous structures that possess certain specific properties. Only afterward did (they) observe and measure the positional and angular relationships of the objects in question."

To the critics, Carlotto concludes: "In science, confirmation or refutation of claims should begin with bona-fide attempts to replicate the original work. As far as is known, no such actual attempt has been made by any challenger, either on the Cydonia photographs or on a random terrestrial or Martian landscape of the challenger's choice. At this writing all claims of refutation remain entirely conjectural and anecdotal."

We highly recommend *Enigmas* as an essential part of all our members' libraries, and a useful tool to help convince others of the validity of the investigation.

PRODUCT UPDATE:

You should have received all other products ordered from our catalog, except for the medallions and poster. The former are now in production and will be in the mail very shortly.

Unfortunately, the poster has been delayed indefinitely and we can give no firm date of its printing. Any of you who have ordered it and who do not want to wait longer, should contact us for full refund. All other orders will be filled when the poster does become available.

KUDOS:

This is a new section in which we thank individual members for their contributions to *TMM*. The

word 'kudos' comes from Greek and means in English 'credit for achievement, glory or fame.' It is, of course, the root word associated with the object of our investigation: Cydonia. Our thanks go to:

Whit Wise of *Florida Mufon*, Tom Hanna of *Space: The Future Frontier*, and Wendell Shuster of *Canadian UFO Contact Network* for their efforts to further publicize *TMM*.

Lele Maloney and Signe Rudock for their specific recruiting of new members.

Otto Weinkauff, Emmitt Frazier, Michael Domino, Mark Begnoche and Susan Salaman for contributing new ideas and suggesting references to us.

Ed Strine and Dave Laverty for their continued efforts in the Bay Area.

Dick Criswell for his continuous audio and visual expertise.

Chuck Linn and Mark Archambault for letter writing.

Rosemary Decker for being our best cheerleader, recruiter, and insightful thinker.

Well done to all of you. We'd like to put in every member's name next time!

WEST UPDATE:

Egyptologist John Anthony West and geology professor Robert Schoch of Boston University are continuing their assault on the standard dating for the construction of the Sphinx at Giza. Following Schoch's lecture last fall to the Geological Society of America on these radical new ideas, he was invited to debate his hypotheses this February in Chicago before the American Association for the (cont. p. 18)

Hoagland U.N. Speech (Concluded from p. 1)

and reveal to the global community what is potentially the most important human discovery of the twentieth century.

For a week before and after the speech *TMM* is exhibiting photos and other graphics representing the findings to date. The exhibit is in the main corridor of the Secretariat Building.

'The choice of areas to photograph has been mine from the start.'

MARS OBSERVER: IT'S ALL UP TO MALIN

Since our last issue of *Martian Horizons*, both *TMM* and our membership have sought further clarification of NASA's intentions with regard to the reimagining of Cydonia by the Mars Observer probe, scheduled for launch about September 1.

1. Following up on the article "More Politics of The Mars Observer Mission," we sent letters to both David D. Evans, the project manager for NASA, and to George E. Brown, chairman of the House committee on Science, Space and Technology. Referring to the above in the copies of *MH* we enclosed, we asked both Evans and Brown once again to clarify the discrepancies we see between what Congress and NASA are saying with regard to Cydonia.

To Evans we wrote in part "enclosed (is) a copy of Chairman Brown's letter to (*TMM* member) John Howell in which he reiterates the previous understandings of former Chairman Roe, that NASA does intend to make a concerted effort to reimage the important objects at Cydonia with the high resolution camera. This, of course, directly contradicts your letter to us, as well as other statements made by NASA personnel."

Writing to Brown, we referred again to the letter to Howell. We continued: "In this you clearly reiterate Chairman Roe's understanding, that NASA does intend to make every effort to reimage the anomalous objects at Cydonia with the high-resolution camera aboard the probe. This is completely at odds with the stated position of David Evans, project manager, and others at NASA who have stated NASA has made no change of plans since 1985, and has no specific plans to photograph any portion of the Martian surface.

"There are serious discrepancies here, and there is serious doubt whether any high-resolution photos of any of the anomalous objects will be forthcoming. This seems totally unimaginable to anyone, given the implications of finding ruins on Mars, and the ease with which the photos could be taken. (We) believe it is now time for you, Chairman Brown, to once and for all tell the American people what is going on. If nothing is done soon an incredible scientific and cultural opportunity will be lost — due to apathy and negligence."

Neither Evans nor Brown has responded to these letters.

2. Mark Archambault, another *TMM* member, has had more luck in obtaining an answer, from geology professor Michael Malin, the mission cameras principal investigator. In response to Archambault's request for clarification of the plans to reimage Cydonia, Malin wrote to him (in part) on January 2, 1992:

"Thank you for your letter regarding the reasons for taking images of the Cydonia region of Mars. Features within this region have intrigued a number of people, and I have received comments from many of them. Rest assured that, if it is possible, the Mars Observer Camera will attempt to acquire images of the areas of interest."

He adds, however: "You will note that I use very cautious wording here. The reasons have nothing to do with politics, but rather with the nature of the mission, of the camera, and of Mars itself." He then reiterates some of the same technical difficulties we were told of earlier by Evans, concluding: "So, I hope you understand that I cannot *guarantee* the images of interest will be taken. On the other hand, we will try."

Malin then continues with some personal statements. "We have always intended to acquire images in Cydonia, because there are many scientifically interesting geological features there. Please note that I do not subscribe to the contention that there are artificial features in Cydonia. My 20 years of experience in the interpretation of spacecraft photographs, and field work in many diverse environments on Earth, convince me that the features seen in Cydonia are natural. However, as a scientist I am always testing my interpretations — that is one of the principal hallmarks of science.

"I would like to dispel any perception that there has been, or exists today, a conspiracy to hide results from the public or to influence what observations will be made. No one at NASA has ever attempted to dissuade me from acquiring images in the Cydonia region. No one at NASA has ever encouraged me to take such images, either, but this is because the choice of areas to photograph has been mine from the start.

"The best scientific evaluation available today finds that there is no credible evidence to support the contention that these features are artificial, and NASA basically cannot predicate mission objectives and the high cost of meeting them on the highly speculative and improbable likelihood that Mars was, at one time, inhabited."

Malin concluded, stating the photos will be made available to the general public "after the six to nine month period my team needs to validate the data, and conduct its preliminary science analysis."

3. We deem Malin's letter extremely interesting and revealing. He clearly follows along with what we had already learned from Evans, and he emphatically denies that he believes there are ruins on Mars, citing his long years of experience as the primary reason for doubting this. On the other hand, he strongly implies he is open-minded, and would be willing to look at new data and evidence that might prove him wrong. ("I am always testing my interpretations.")

Additionally, and surprisingly, it would also seem that he and/or NASA have made some additional studies of Cydonia above and beyond the dismissal of the Face as a "trick of light and shadow," even though there is nothing in the public record to indicate this. We infer this from his statement regarding "the best scientific evaluation available." We also think that any such studies should immediately be made public and available to us.

Even though Malin states he has seen solid scientific evidence against the reality of ruins at Cydonia, he still seems willing to test his conclusions based on information new to him. We wonder if he has seen any of the data presented by *TMM*. If not, then the only reasonable conclusion — based on Malin's own statements — is that he would more than gladly study it, and do so with the objectivity of a true scientist. This could, therefore, raise hopes for optimism, even to the point of a face-to-face meeting between NASA and *TMM*.

There are, however, some chilling statements in this letter. Apparently, Michael Malin — and only Michael Malin — decides how the Mars Observer cameras are to be used: "the choice of areas to photograph has been mine from the start." So it would seem that no elected official of the United States, no NASA administrator, and certainly not the American public has any input whatsoever in how this mission proceeds and how our tax dollars are spent with regard to these cameras. Is this the government of the people, by the people and for the people?

Further, it also seems that no pictures taken by Mars Observer will be made public for six to nine months after they have been returned to earth. This is in direct contradiction to NASA policy going back over 25 years in which the photos from other probes of the planets (including, and especially Mars) have been available nearly instantaneously for wide dissemination. Has our technology regressed to the point where this is no longer possible. That does not seem likely.

It is our conclusion that Malin has opened the door for interesting new dialog with *TMM* and others, whether he has intended to or not. He has also raised some serious questions about who controls what NASA does, and how it goes about running its missions. Certainly no one man should be given such enormous power; even the President is answerable to Congress, the courts and the people.

We therefore urge all members of *TMM* to consider the

implications of what is contained in this article. Now is the time for action.

Write to your own Congressmen and:

Rep. George E. Brown, Chairman
House Committee on Science, Space and Technology
Rayburn House Office Building, Suite 2320
Washington, DC 20515

David D. Evans, Manager Mars Observer Project
Jet Propulsion Laboratory, Mail Station 264-627
4800 Oak Grove Drive
Pasadena, CA 91109

Prof. Michael Malin
Arizona State University
Department of Geology
Tempe, AZ 85287-1404

Editor's Corner (concluded from p. 16)

Advancement of Science. Both he and West were available at the conference for further discussion. An in-depth report on this event is planned for *MH*, Spring.

FINAL NOTES:

Expect in the upcoming months an extensive article on the investigation of Cydonia and *TMM* to appear in a major national magazine.

We continue to need the support of all our members by their contributing new ideas concerning the investigation, by recruiting new members, by helping publicize our organization to the media and others, and by continuing to write NASA and Congress about the importance of Mars Observer and the complete reimaging of Cydonia. We think 1992 is the crucial year, and everyone's effort is required.

THE MARS MISSION CATALOG

1. The Monuments Of Mars, by Richard C. Hoagland. Revised edition.

Available April 1992. Specially *signed for members* by R.C.H. Order now!

Quality, large format, softcover - \$16.95, LIST; Members' price, \$14 _____ @ \$ _____ = Total _____

2. *Hoagland's Mars — The NASA Cydonia Briefings*

83-minute VHS video tape based on Hoagland's addresses to NASA.

Includes exciting new computer-generated 3-D 'fly-over' of Cydonia.

\$24.95, LIST; Members' price, \$22 _____ @ \$ _____ = Total _____

3. *The Monuments Of Mars: The Music*

Mark Dwane's haunting and evocative rendition of Hoagland's Monuments in musical form. (Portions heard on the video *Hoagland's Mars*.)

Compact Disc - \$16.98, LIST; Members' price, \$14 _____ @ \$ _____ = Total _____

Cassette Tape - \$9.98, LIST; Members' price, \$8 _____ @ \$ _____ = Total _____

4. *Investigation Papers*, by Richard C. Hoagland — studies not yet available elsewhere.

[Shipping/handling only \$1.25 each for these two papers]

• "The 'Message of Cydonia' — First Communication from an Extraterrestrial Civilization?"

Coauthor: Erol O. Torun - Fall 1989, 21 pgs & illus. _____ @ \$6 (LIST) _____ @ \$4 (MP) = Total _____

◦ "The NASA Cydonia Briefings — Communication of an Advanced Science from another Civilization?" - Fall 1990, 14 pgs & illus. _____ @ \$6 (LIST) _____ @ \$4 (MP) = Total _____

5. SACRED SHAPES, from Earth Star Studio

The tetrahedron is the primary geometric shape that unravels the mysteries of the Monuments of Mars. You can have a beautiful hand-crafted model. Or a 'star-tetrahedron' — two interlocking pyramids. The 16-inch model rotates inside a mounted circle, demonstrating the 19.5° principle; RCH uses this model in lectures. All are precision-made, mesmerizing, fun, and instructive!

10" metal pyramid	_____ @ \$ 35	= Total	_____
4" star-tetrahedron	_____ @ \$ 50	= Total	_____
8" star-tetrahedron	_____ @ \$ 85	= Total	_____
16" star-tetrahedron	_____ @ \$375	= Total	_____

6. MARS OBSERVER Golf Shirts

Special edition golf/sport shirts with logo of Mars Observer and The Face

Size/s _____ [S, M, L, XL] _____ @ \$30 (LIST) _____ @ \$25 (MP) = Total _____

7. FACE ON MARS T-Shirts

Special edition, showing Sierra Leone stamp and the Face

Size/s _____ [S, M, L, XL] _____ @ \$18 (LIST) _____ @ \$14 (MP) = Total _____

8. BARBURY CASTLE T-SHIRT

Short sleeve, black or white, gold silk-screen letters (see p. 15)

Size/s _____ [S, M, L, XL] _____ @ \$18 (LIST) _____ @ \$15 (MP) = Total _____

9. *The Martian Sterling Silver Medallions — by Craig Potter*

2" diameter; Face, numbered limited ed., certificate of authenticity, display case

\$125, LIST; Members' price, \$70 _____ @ \$ _____ = Total _____

10. *Geometric Metaphors Of Life*, by Stan Tenen

108-minute VHS video tape: a new theory on the origin of sacred alphabets.

\$37, LIST; Members' price, \$32 (incl. document) _____ @ \$37 (LIST) _____ @ \$32 (MP) = Total _____

11. *Matrix of Meaning for Sacred Alphabets*, by Stan Tenen

119-minute VHS video tape: a sequel to *Geometric Metaphors*.

\$37, LIST; Members' price, \$32 (incl. document) _____ @ \$37 (LIST) _____ @ \$32 (MP) = Total _____

12. TMM Poster # 1 — 18 x 24, duo tone collage

The Face, with an artistic border of other Cydonia features. Guaranteed to cause a conversation!

Suitable for framing. Available 1992. _____ @ \$16 (LIST) _____ @ \$12 (MP) = Total _____

13. *The Monuments Of Mars: Evidence of A Lost City On Mars* - audio docudrama

60-minute audio cassette & glossy map of Cydonia _____ @ \$11 (LIST) _____ @ \$9 (MP) = Total _____

14. Martian Enigmas, by Mark J. Carlotto — his long-awaited photo survey.

Softcover - \$16.95, LIST; Members' price, \$14 _____ @ \$ _____ = Total _____

Hardcover - \$29, LIST; Members' price, \$22 _____ @ \$ _____ = Total _____

MERCHANDISE SUB-TOTAL _____

California residents add sales tax [merchandise only] _____

15. Annual Membership in <i>The Mars Mission</i> -- \$25 (U.S.), \$30 (other)	_____
Includes <i>Journal</i> , discounts on merchandise, special announcements	_____

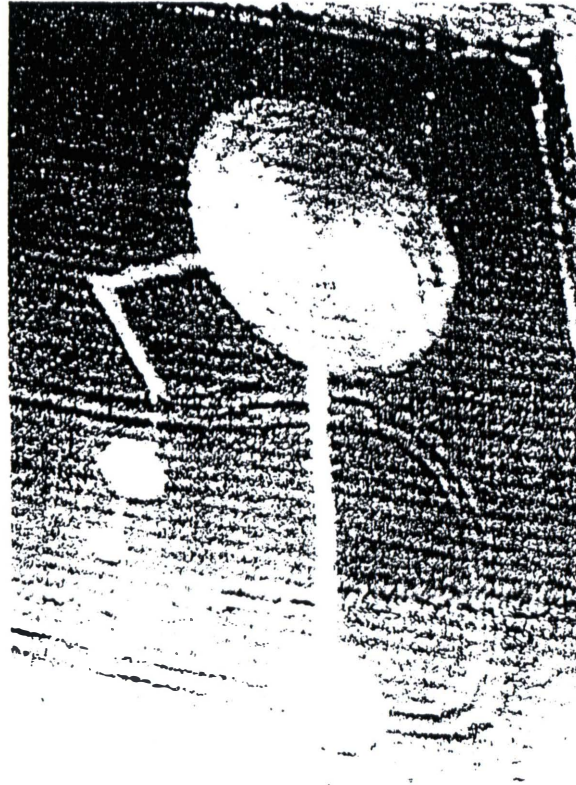
16. Shipping/handling @ 2.50 per item [except: item 4 (papers) & \$4 per item if out-of-U.S.A.] _____

17. TOTAL ENCLOSED _____

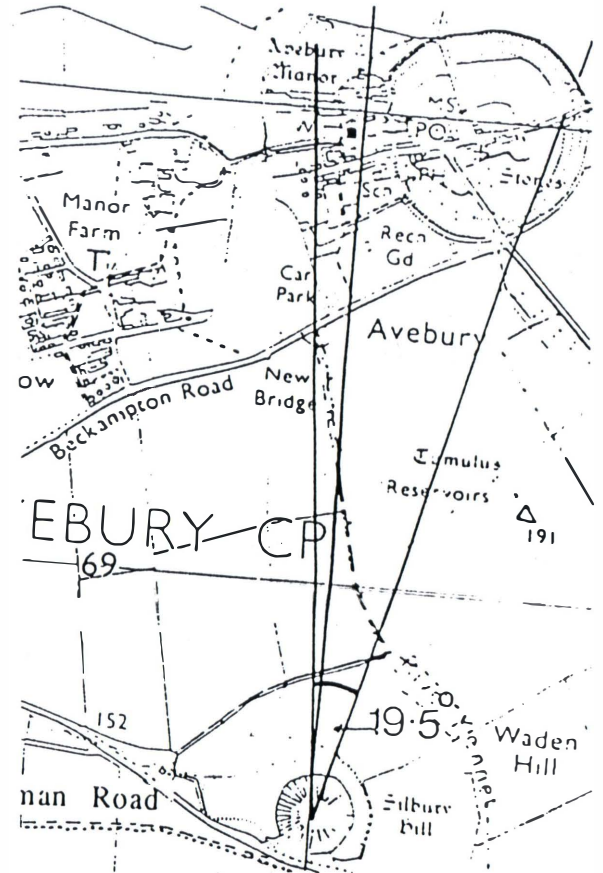
Note: Non-members, pay the 'list' price. All items are shipped 'ASAP,' many within 48 hours; please allow 6 weeks, especially for hand-crafted/specialty items. All payments in U.S. dollars (incl. foreign postal orders). No cash, please.



Martian Tholus & Crater ...



English Crop Glyph ...



Avebury/Silbury Area, England ...

***What Do These Three Geographic Features Have In Common?
For The Amazing Correlations Between Them See Article Page 1.***

The Mars Mission
P.O. Box 123
Danville, CA 94526-0123



Newsletter..... Things To Ponder?

Mars Mission: The Ultimate Earth-Mars Connection and the Cydonia (MARS) Avebury/Silbury Stone(henge) relationships.....Is the Solar System a giant crystal and is its nomenclature linked to a Light Grid System that is a 3D-4D-5D schegmatic that includes many sciences; Physics, Paraphysics, Quantum, Ancient Monuments and Linear Measure Light Systems (rediscovered) not only in Pyramidology research but in various books akin to Ralston Skinner's "SOURCE Of ANCIENT MEASURES"; Connors "PSYCHOMATHEMATICS"; and Tibetan artifactual records that must be reviewed?

The Geometric connections with the TETRAHEDRAL alsoCrop Circles found in various parts of the world support a greater geometric system dealing the octahedron, icosahedron, cube, and the dodecahedron having (TET) four, (OCT) eight, (ICOS) twenty equaliteral triangles, (CUBE) six squares and a (Dodechahedron) twelve pentagons.

These interlocking geometrics feed a Light system chain that form a fractal system in space that connect the accomplishment through the creation of the solar system and its functionary purpose.

Another words the basis of all interacting fractal energies give us the Light-Space-Solid-Gasous-Plasma states as we know them. MEST comprises MATTER, ENERGY, SPACE and TIME which incorporates SOLIDS, LIQUIDS, GAS, and PLASMA which are THE FOUR STATES OF MATTER.

These states are conversionary factors from one to another which support a certain condition and purpose for planets and the Light operation producing energy confurations seen and unseen which are kinectic or multi-dimensional. The configurations in the solar and beyond systems (outside our solar system) reflect a crystal focus of Light attunement that move at certain speeds within an electromagnetic spectrum that include travel on different wavelengths (vibrational).

This would refer Grid Light systems found not only upon the earths interacting surface dealing with stones, pyramids, stone kingdoms intrastructures or schegmatics to underwater, earth surface terrestrial, aerial, outerspace....and even subatomic. This is (may) also be related to the Kings Chamber's Messianic 100 Stone (The Great Pyramid) Morphology (related to other planets and their morphology of material substance) dealing also with conciousness or "thoughts are things substance" and etheric aura levels related to subliminal lower frequency initiation found in The Kings Chamber. Coffer-energy-consciousness is another explanation (Moses Arc of Covenant) found in The

Kings Chamber - G.PYR.

Therefore relating to the Mars ancient civilization project is that the inhabitants utilized a multiple fractal energy system with strategic points in space that changed energy for different reasons utilizing the Solar as the pivotal Matrix system which may yet be coorelated the to Kings Chamber's 100 stones as a amplifier for our energy chakra system that contains a Female- Male Tetrahedral energy pattern system (subliminal).

The ten, one hundred, and even the 1000 multiple or interger derivative from the 100 stone amplifier energy in the Kings Chamber-Coffer make up.... is really the Trium Stream or the totality of harmonic exchange of Light that balances with a crystal interface or perfect shape crystal force that penetrates the Solar or the Trium Stream in harmony wth planetary resonance and orbital movement which includes opposition, agreement and all conjunctive configutive positions. TRIUM STREAM-BALANCED-HARMONIC TOTALITY FROM ALL FOCUS AND OPERATIVE POINTS-UNIVERSAL.

2

This complex activity is rather simply stated although greater simplicity could be stressed as well as more technical data to be added in another newsletter if need be ...for those attuned or identifiable through education on this subject science within the subject of Mars, Grid Systems, Pyramids, Electromagnetics, Lightwaves etc.....

We simply state the following! The inhabitants that existed in that millenium had the procedure of fractal knowledge and energy functioning to purpose light into a natural law expression for cosmic identity for exchanging a much available natural or free energy form.

Let us put it this way!.....anywhere from well positioned stones or angular stones or similar calcium carbonates (crystal formations) naturally formed which identify exactly with a tetrahedral purpose and maximize a true energy system and a Conciuous(ness) system that suggests beyond a sedimentary natural form... thus existed a highly intelligent race! Angles re: to Calcium Carbonate re: to TET on Cydonia, Mars...e/pi, crystal, stones, Pi3.1416, latitudes are all equity or proportion to each other upon earth/Mars etc.

The Martian intelligence had the mobility of travelling through space beyond the speed of light which means time is collapsed but comprehended the Fractal - Geometric relating forms of Light (LIGHT LINEAR MEASUREMENT CODES) found in EARTH TERRESTRIAL STONE ASTRONIMICAL LINEAR STONE MEASURES. Travel beyond the speed of LIGHT must have existed (opinion) no laws in that dimension that corresponded with light as we know it! The use of four sides, four faces, six vortexes (vectices), four equilateral triangles and an

energy system found in our body/physiology (male and female tetrahedral energies found in every individual(s) chakra energy) configuration system that has links to chromosome changes, genetic evolution etc.

The tetrahedral is also a derivative configuration found in the Teo Pyramids in Mexico along with the light, sound, music, and linear (exchange light from ancient measures) pyramid components coupled with the Harmonic Ancient Cubit of 27.5 inches (SQUARE ROOT) of) base of Pyramid of Giza 755.5\481.4 ht. or 3.1416 PI (2B/HT=PI-3.1416). One of many CUBITS found in GIZA; 20.67" Profane Cubit, and The Sacred Cubit; 25.03" are more well known in The Great Pyramid than the Harmonic Cubit of 27.5 inches (unknown in general). Other measures are available for true proportions if Linear and Light systems are studied.

This means that the height of the Great Pyr 481.4 ft. divided into twice the base= PI or 3.1416 which gives the key to an earth commensurate measure regarding the answer to the circle, square, triangle that dealt with the movement of the earth as far as configuration vs. planet rotation/Matrix Solar distributionrotation not only among the movements but the focus of all movements within one focus as an individual can perceive it in simplicity.

PI is only an adjuster to the commensurate hence it is linked to the infinite based upon non commensurate activity which does not end in 0 based upon PI or the non ending sequence of PI 3.1416 but endless 1-9 numbers or progression to Solar System movement out/in of Our Solar System....actually based upon PI progression.

Since the Martian influence appears not only with the intergration of angular crystal formsnot only on Mars but the Pyramids found upon the earth Grid systems have synamous relationships with angle, slopes, latitudes and longtitudes only known to someone knowledgeable in ancient mathematic or linear measures- Pyramid nomenclature. Pi is planned to be computed eventually to 100 million and the last report was 33,554,432 digits.

This includes a light wave concept and orbital relationships dealing with ancient structures that reflect earth commensurate sciences that contained the understanding that the many sciences were dealing with the internal portions of BODY-MIND-AURA (SPIRITUAL CONCEPT) or our energies proceeding through the Electromagnetic Spectrum(s).

These are eventually found in other planets such as Saturn, Jupiter, Venus etc. (evolution of planetary processes) with a possible 19.5 latitude both North and South Polar that contain an environmental study of that planet

system with all the other studies that accompany not only the pyramids on Mars but the pyramids herein on earth.

Its suggested that Grid Systems inclusive of The Great Pyramid in Egypt wherein Cairo has language roots in ancient records-Arabic languages that subscribe to a definition of Mars meaning "Cairo"; contain not only mathematical but alphabet linguist codes not only in pyramids but coding systems in calendar nomenclature within the pyramid alphabets themselves. Ref:" THE COMING STAR SHIFT" by O. Gordon Pickett and "SERPENTS IN THE SKY" by John West.

The five elements FIRE, EARTH, AIR, WATER, and GAIA-Grid SYSTEM linked to the TET, CUBE, OCT., ICHOS., and THE GAIA GRID respectively for our creation through a LIGHT GRID upon our EARTH and the SOLAR MATRIX SYSTEM itself.

Tremendous PARAPSYCHOLOGICAL (ORIGIN and ETHERICS of CONSCIOUSNES through MATTER), PARAPHYSICS, and SOUL evolution through our CARBON origins are involved herein with these studies re: OUR entrance into THE SOLAR SYSTEM... MARS is only ONE KEY... but very important!

THANK YOU,

INST.of PYRAMIDOLOGY-PRIVATE FOUNDATION, RESEARCHER, RADIO COMENTATOR, AUTHOR, KEEPER and FOUNDER of THE LIBRARY of UNUSUAL STUDIES,
..... HOWARD J METZ

Howard J. Metz
Inst. of Pyramidology

E=MC(SQUARED) EINSTEIN= LIGHT
SYSTEMS UTILIZED =ALL LIGHT ENTERING
EARTH TERRESTRIAL=PYRMID LIGHT SYS.-
EARTH TERRESTRIAL MAGNETIC SYS.BASED
UPON THAT MAGNATIC FIELD...MEAN IS
DERIVED BY OPPOSITES WITHIN THAT
MAG. FIELD BY DIVIDING FOR A COMMON
NUMBER... SUBTRACT from the MEAN
NUMBER THE PYRAMID LIGHT NUMBER
and that NUMBER DERIVED IS THE LIGHT WAVE
THAT OPERATES THROUGH RESONANCE IN
THAT PARTICULAR MAGNETIC FIELD FOR
THE PERSONAL USE OF POSITIVE ENERGIES TO
INHANCE ENVIRNOMENTAL HARMONIC PROCECESSES WITH NATURE.

THE RESEARCH CONTINUES....

NEWSLETTER "THINGS TO PONDER " (cont:)

The Great Pyramid - ICOS- TET SYSTEMS :

The Great Pyramid with the earth energy grid system shapes a diamond that relates to all energy

systems through out the earth forming a ICOS or ICOSAHEDRAN GRID which is a monolithic structure of interlocking TET's or TETRAHEDRALS which give the TRUE RECIPROCALs of LIGHT operating on all GRID POINTS.

According to Hiertak's "KEYS OF ENOCH" pg. 74... The Great Pyramid in alignment with the constellation ORION which forms the local eye point that retrieves all movements dealing with the energy grids from their originsmeans the energy is a light continuum of the many universes therefore star shafts reflect harnessing (L)light from the imperisable "Ihmw-'sk" a true solar astronomy or pg. 578 "THE KEYS".. Egyptian version dealing with ORION, SIRIUS star areas that encompass YHWH Outerspace Hierarchy or the HEB(REW): A version which express'es outer hierarchy that combines a spiritual and physical star levels meaning "THE LORDS OF LIGHT".

The Great Pyramid angles of passageways through The Great Pyramid ...star shafts (North) originally pointed toward Alpa Draconis circumpolar and The South pointed toward ORION. These systems showed the recapitulation (past) as well as the future dealing with our space evolution through rotation and calculation. The living light upon this earth consciousness is really pulsating Mother nature fighting the earth's destruction through Environmental, Ozone etc. This is incorporated within the "EBEN SHETTIYAH" the foundation for the living light upon this earth or "THE BROTHERHOOD OF LIVING LIGHT" which will convert our survivors in the Coming Times of Physical Earth Changes into a Dimensional World from Three Dimensions To Fouragain the movement and merger of the TET-Four Equilateral Triangles -and the OCT-Eight Equilateral Triangles within the monolithic ICOS-Twenty Equilateral Triangles....which is really into 4th Dimensional and 5th change of consciousness which activates Light Density Beings etc.

These configurating energy light systems will support physical and etheric changes consciously within

CELLULAR, CHROMOSOME, and GENETIC ENERGY HELIAX BONDING
SPIRAL SYSTEMS that evolutionized and involutionized
themsevles from outer space considerations through these TET-
OCT-ICOS GEOMETRICS.

This would also include the intercourse of
ideas and energy exchanges within our space earth
world and Extraterrestrial Technology and Consciousness!

THE PISTIS SOPHIA -NAG HAMMADI, EGYPT

The early recordings of Jesus Christ found
in NAG HAMMADI EGYPT in 1956 referred to as the "THE PISTIS
SOPHIA" created in thought patterns interpreted into GREEK
and COPTIC, one of the great gospels because it supports the
language of JESUS and the mysteries upon calling down HIS
Higher BODY OF LIGHT in HIS disciples presence. This explains
the 32 Chemical Building Block Universe Intelligence found in
our universe or "LAK BOYMER" or The Mystery of The Logis
which is The Pillar of Light that calls the (33rd degree)
Christ Body of Light to inhabit the Jesus Body... came
together to form the star of David. The incarnate word became
the body of Jesus/Body of Christ merged = David = Two
brilliant pyramids of Light = 3 D existence of Light
Embodiment in the Eternal Plan. Many dimensions are spoken of
and One incorporated into 24, into One, One =24, 24=One etc.
(JESUS and THE TWENTY FOUR MYSTERIES (24)). Egyptian Pyramid
Texts revealed the true child of God will through The Eye of
Horus bringing true Pyramid Light. * PISTIS SOPHIA (cont. 4th
par: below]

Higher Light and The Coming Light Being Development Potential In All Of Us:

The original ENOCH(IAN) knowledge set the
conditions for entrance into The Great Pyramid for the
(MASONIC) INITIATIAN also of the 32-33 level conciousness not
only found in the Great Pyramid Chronolgy when the ancient
calendars shift in (from) the North Polar Draconis upper
passageway shift B.C to A.D. leading up to the Ante- Chamber
and WW1 (1918 AD.). This being the end of LINEAR TIME which
includes our rational systems of thought and standard-common
beliefs.....which now is the inception of NON-LINEAR TIME
from 1918 AD. through the ENOCHIAN CIRCLE found in the Ante-
Chamber that computes the ENOCHIAN CIRCLE= TIME =DAYS=CIRCLE
CIRCUMFERENCE IN INCHES.

This is based upon The Circumference of the
Circle = 365.24 days in Pi 3.1416 x Diameter of Ante Chamber
116.26 = Circumfernce = 365.24 (days) Linear into Non Linear
TIME through The Kings Chamber 100 stone Morphic Stones
(Trium Stream which is an enormous crystal interrelating
Planet rotation and Harmonics and Sun Matrix which is the

original initiation of the "OUT OF THE BODY" crystalline (CRYSTAL HARMONIC LIGHT WAVE TRAVEL OF CONCIIOUSNESS WHICH IS A FORM OF "THE GNOSTIC SELF MANIFESTOR") surrounding the human conciousness network of HARMONICS and CRYSTAL ANGLE POWER.

Non Linear Time supports the understanding that the Book of Daniel, Times and Half Times 360 days and 180 days found in not only Prophecy but in The Chronology Of The Great Pyramid Kings Chamber, The Gnostic Self Manifestor, Inches, Feet, Yards, Cubits, Meters and Centimeters. * Derived from "Yared"= [yard] which is Noah's measures from the second sinking of Atlantis (DONNELLY-SYKES)- "Atlantis ..The Ante Deluvian World" and Edgars Cayce's Atlantis in agreement historically and pyschically with each other...Edgar Cayce...Virginia Beach, Va. "The Sources of Ancient Measures" by Ralston Skinner mail to Wizards Book Shelf, San Diego, California is also recommended.

PISTIS SOPHIA (cont:)

The Pistis Sophia text forms the contents of the ASKEW CODES made available to scholars over a century ago. However a modern Gnostic document (Coptic) that was not interpreted into English was somewhat lacking for several years. It is believed that all gnostic writngs historically should come together previous as well as contemporarly referring to the 1956 NAG HAMMADI STUDY SERIES found in EGYPT.

Hiertak comments in audio tape series put out by The Academy For Future Science Bx FE Los Gatos Ca. relating to "The Keys of Enoch Series " that the human race(s) inheritance dealing with biological and chemoical substances refering to GENETICS, HELIAX, CHROMOSMES, and therefore inherent energy systems that also influence AMMINO ACIDS and the ELECTRIC TRANSMISSION SYSTEMS of ADP and ATP dealing with sugar glycogens and Hydroxides were severely tampered with from Hierarchical space intelligence thousands' of years ago or even earlier than that. This does not suggest an entirely positive or negative stance.

According to Hiertak and it appears from coorelating evidences in multiple sciences recently being rediscovered or suggested (allegedly?) in TIBETIAN ARTIFACTUAL RECORDS yet to be fully investigated in TIBET (presently sensitive political situation with China).... that THE PISTIS SOPHIAN writngs of CHRIST suggest a more diligent understanding that our planet earth has a correspondence not only with STONE KINGDOMS relating to STONEHENGE-LIGHT TERRA RELATED AVERBURY/SILBURY CIRCLE which are KINGDOMS OF LIGHT TRANSFERANCE FROM SPACE BUT ALSO GRID SYSTEMS dealing with the MARS-CYDONIA pyramid nomenclature.

These mathematics dealing with PI 3.1416

infinite factor, PHI(.618)GREEK determining factor dealing with the coffer (KINGS CHAMBER) MOSES ARK of CONVENANT proportion to wavelength measure and to ETHERICS BODY AURA and ENERGY SYSTEMS PATH TO UNDERSTANDING THE SOUL INVOLUTION.

This means "OUT OF THE BODY" PARAPHYSICS which is PARAPSYCHOLOGAL or THE SPIRITUAL JOURNEY THROUGH THE ENORMOUS SPACE CRYSTAL KNOWN AS THE TRIUM STREAM LIGHT ATTUNEMENT LEADS TO THE SOLAR MATRIX OR GREAT PYRAMID PURPOSE. THIS INCLUDES THE PLANET ROTATION AND THE HARMONICS FOR PASSAGE OF THE SOUL REQUIRING SPIRITUAL KNOWLEDGE AS WELL AS SCIENCE ON OTHER PLANES, REALMS and THE SOULS ORIGINAL ENTRANCE AND EVOLUTION - INVOLUTION HAVING A CARBON EVOLUTION DATA PROCEDURE CODEX. Spiritual radians, latitudes, crystal angular cuts of calcium carbonate configurations..... but part of our biological evolution and involution is found in the MYSTERY SCIENCE of THE PISTIAN SOPHIAN recordings dealing with HIERARCHAL ANGELS OR KINGDOMS OF LIGHT and DARKNESS... for that matter..... SIRIANS, PLEIDIANS, ORIONS etc. 8

Our genetic inheritance is related to other evolutionary and involution systems in space and other realms that will become affordable to us very shortly in terms of years and decades. THE PISTIS SOPHIA CONSTANTLY RE-ENFORCES THE SCIENCE OF LIGHT FOR SPIRITUAL DEVELOPMENT WHICH IS NOW CONCEIVABLE IN SCIENCE and CONSCIOUSNESS!

Atlantis (over 2000 books published)and Lemuria and earlier civilizations have suggested vast sexual changes especially four physiological changes since the bisexual LEMURIANS (not bisexual as we know today but "a sole producer of an off-spring") referred in The ARE or by Edgar Cayce's The "Biblical Ruth" Physical Body Changes and the evolution of Great Floods and Contenantal Changes. A Library exists in Virginia Beach, Va..... Hiertak's California and Issac Newtons filed work in England and elsewhere. Ancient and Outerspace heritage.

This is not to mention Theosophy, Rudolph Steiners Academys, Russian Science Magazines, American Society For Pyschic Research 5 West 73 St. NYC., Hubbards "Dianetics"....(IR)regardles of what your opinions are.... is the best seller in the last 30 years (THOUGHT PROCESS'S are simply discovered in the mind-mental individuals conciousness based upon not only the past experiences in this life but past experiences where the soul had chosen to go in past lifetimes ... utilizing an "E" meter patented for electro static feed balance with the mind and body...its too simple! There are many procedures. Truth is in many fields.

Psychotronics.... Nicholai Tesla's summaries and technical knowledge could have resulted in a free energy society in the 1900's recognized by many

metascience organizations in the past and the present.

The Nag Hammadi Bibliography is now a considerable accumulation of literature. The Pistis Sophia includes much allusions relating to the Old and New Testament. Following Schmidt and Till other writings should be consulted such as GRS MEAD (BIBL. 34), J. Moffat (BIBL>35) and W. Till should also be consulted. Review articles such as D.M. Scholer: Nag Hammadi Bibliography!

British Library and The Depart. of Oriental Manuscripts and Printed Books.....British Museum include where these writings can be found. C.G. Woide inherited the studies from Askew, first brought this to the attention of Theological readers under the present title: "Pistis Sophia" but also quoted these quotations in "Appendix ad editionem Novi Testamenti graeci e codice Ms. Alexandrino"...Oxford 1799 A.D. Statements listed below from the writings of Christ dealing with the above mentioned sciences especially "Light" are referred to in the Pistis Sophian Copy VOL. IX extracted from The Coptic Gnostic Library published under the auspices of Antiquity and Christianity (INST.). Text edited by Carl Schmid translated by Violet Macdermot and published by LEIDEN - E. J. BRILL 1978.

Book I PISTIS SOPHIA:

CHAP I-6: Survey of the Post Resurrection teaching of Jesus: coming down of LIGHT POWER on The Mount of Olives.

CHAP 7 - 10 Discourse by JESUS on his Garments of LIGHT, HIS INCARNATION, HIS DISCIPLES etc.

CHAP 11-16 ASCENSION - JESUS wearing the Garment of LIGHT...the resistance by the Acons against LIGHT

CHAP 28 - 31 JESUS passing through the Aeons with the Garment of LIGHT.

CHAP 59 JESUS on HIS LIGHT POWER which became LIGHT or a crown of LIGHT for THE PISTI SOPHIA. Interpretation by MARY...!

CHAP 60-62 JESUS saving THE PISTIS SOPHIA..The meeting of TWO LIGHT POWERS = great out pouring of LIGHT.

BOOK II :

64-65 Discourse by The First Mystery ... THE PISTIS SOPHIA is saved by the meeting of TWO LIGHT POWERS

66-67 The First Mystery - The out pouring
of LIGHT which was her (MARY) crown against The Chaos...PSALM
90.

68-76 Praising THE PISTIS SOPHIA, citing
the ODES of SOLOMON, ...Relationships with the 13th aoen.

77-80 The First Mystery, persecution of THE
PISTIS SOPHIA by Adamas..JAMES PSALM 7...LIGHT requested.

83-90 The 24 INVISIBLE ONES..13 aeon..PSALM
106 ...Treasury Of LIGHT.

BOOK II cont:

91-96 Mystery of THE INEFFABLE..all
knowledge..renouncing the world.

97-99 The 12 Mysteries of the First
Mysteries and the MYSTERIES Of LIGHT.

100-101 THE INHERITANCE OF THE KINGDOM OF
LIGHT

BOOK III and IV etc.

The author having studied PYRAMID
NOMENCLATURE for 20 years proceeds to cite individuals such
as Hiertak, Hoagland, Cayce etc., with the intention to
establish a spring board for an international understanding
for LIGHT KNOWLEDGE and WISDOM to emerge into the development
into LIGHT BEING CONCIIOUSNESS relating to THE COMING DAYS of
CHAOS in a changing world. BEINGS that can change our
AWARENESS through LIGHT DENSITY by the ATP and the ADP energy
systems that house electeic transmission changes ADENOSINE
TRIPHOSPHATE monitoring LIGHT signals within the BIOCHEMICAL
SHELL of MAN. Energy for different CELL PURPOSES including
BODY DENSITY and CONCIIOUS CHANGES.

THE 64 KEYS of ENOCH AND 64 (KEYS) similar
in knowledge to " I CHING " incorporate their processes with
LIGHT and GENETIC RNA -DNA SYSTEMS placed into a world moving
close to 4 and 5th DIMENSIONAL AWARENESS wherein even DEATH
WILL not be a MYSTERY ANYMORE. Our present religions will
have to change unless they remain with the common man or
those who relate to only a belief system of FAITH. DEATH IS
SCIENCE within an ELECTROMAGNETIC SPECTRUM OF CONSCOUSNESS
and PHYSICS exists in all these areas.. as well as a GREAT
LIGHT OF SPIRITUAL ETHICS existings in ETHERICS/DIMENSIONS
and ENERGIES INCORPORATED WITHIN MANY PLANES KNOWN IN EASTERN
PHYSICS and METAPHYSICS for THOUSANDS (SUPRESSED BY DESPOTS
AND CERTAIN INQUISITIONAL BELIEF SYSTEMS) and/ or millions of
EARTH and PLANETARY YEARS-EONS. * WAVELENGTHS ARE THE SPIRIT
IN MOTION and SPIRITUALISM HAS KNOWN THIS INCLUDING EARLY
CHRISTIANITY and ANYONE STUDYING THE SCIENCE OF PARAPSYHOLOGY

PROOF OF A HEREAFTER THROUGH SCIENTIFIC MEANS...4th/5th DIM.

DIMENSIONAL KNOWLEDGE WILL AFFORD OUR WAY,
NOT ONLY THROUGH THE PHYSICAL BUT THE COSMIC, ETHERIC,
CELESTRIAL LIGHT WAVE PLANES of CONCIIOUSNESS and VIBRATION!
DIMENSIONAL EXPERIENCE WE ALREADY KNOW - SPACE INFLUENCES US
EVEN THROUGH RELIGIOUS LEADERS THROUGH THE HIERARCY DEALING
WITH THE FALLEN ANGELS OF DARKNESS WHICH APPEARS FROM A
RELIGIOUS CREDO SYSTEM AND NOT MORE: THAT OUR SYSTEMS HERE ON
EARTH HAVE BEEN DENIED THE TRUE ENERGIES SYSTEMS NOT ONLY THE
MATHEMICS, BUT THE ENERGY FRACTAL SYSTEMS HAVE BEEN DENIED
THROUGH SPACE INFLUENCES OR THE DENIAL OF FREE ENERGY
PRESENTLY BY THE POWERS ON MOSTLY VESTED INTERESTS.

TWO PSALMS IN CORINTHIANS (NUMBERS 11
UNKNOWN) STATE THAT WARS WILL BE FOUGHT IN SPACE AND THERE IS
WICKEDNESS IN HIGH PLACES SUGGESTING THERE IS EVIL
MANIPULATION FROM HIERARCHAL AUTHORITY IN OUR WORLD OR
OUTERSPACE GROUPS SUCH AS "FALLEN ANGELS" ETC.
OUTER SPACE ALREADY HAS BY-PASSED US AGES AGO..... CYDONIA,
MARS PROVES THIS!

UNLESS WE WERE THERE BEFORE SUCH AS
LEMURIA AND ATLANTIS ETC.... WE ARE PROCEEDING THROUGH AN
ENORMOUS AMOUNT OF MATERIAL AND PHYSIC-SPIRITUAL-BIBLICAL
REVELATION and THAT SUGGESTS WE ARE REACHING A PRECIPICE
OF UNDERSTANDING.....NOT RETURNING TO THE PAST, BUT
CONTINUING INTO THE FUTURE, THAT WE ARE NO DOUBT READY TO UP-
SET THE APPLE CART OF 3D MATERIALISM AND OTHER BELIEF SYSTEMS
SUGGESTING THAT THEY HAVE ALL THE ANSWERS ALONG AS YOU KEEP

3D CONCIIOUSNESS!

WE FIND ALSO THAT MALE FEMALE TETRAHEDRAL SYSTEM IS LOCATED WITHIN A INVERTED TRIANGLULAR SYSTEM RELATED AND SURROUNDING THE NORMAL SEVEN KEY CHAKRA SYSTEM WHICH ARE THE SPIRITUAL CENTERS WITHIN THE PHYSIOLOGY ALSO KNOWN AS THE LIFE PRODUCING CHAKRA SYSTEM OR THE ENDOCRINE SYSSYEM. THIS IS THE PINEAL, PITUATARY, THYMUS, THYROID ETC. THAT ARE MEDIATATION CENTERS AND THERE ARE MANY MORE!

THE ENERGIES UTILIZED CAN BE RESULTANT IN PHYSIOLOGICAL CHANGES BY FIGURE 8 BREATHING AS TO SUGGEST AN EVENTUAL EXCHANGE BETWEEN THE M-FE TRIANGULAR SYSTEMS ENERGY FIELDS THAT ALSO INFLUENCE THE CHROMOSOME HENCE THE GENETIC TREE SYSSYEM NOT ONLY FOR DETOXIFICATION BUT CHANGING STANDARD SURVIVAL SYSTEMS INCLUDING AGING AND OF COURSE LIGHT INTENSITY DEVLOPMENT FOR ADVANCE CONCIIOUSNESS WITHIN THE CHAKRA SENSE TRACK, AURA, THE SELF, ...THE SUPERCONCIIOUS HIGHER MIND ETC.

PYRAMIDOLOGIST,

HOWARD J. METZ

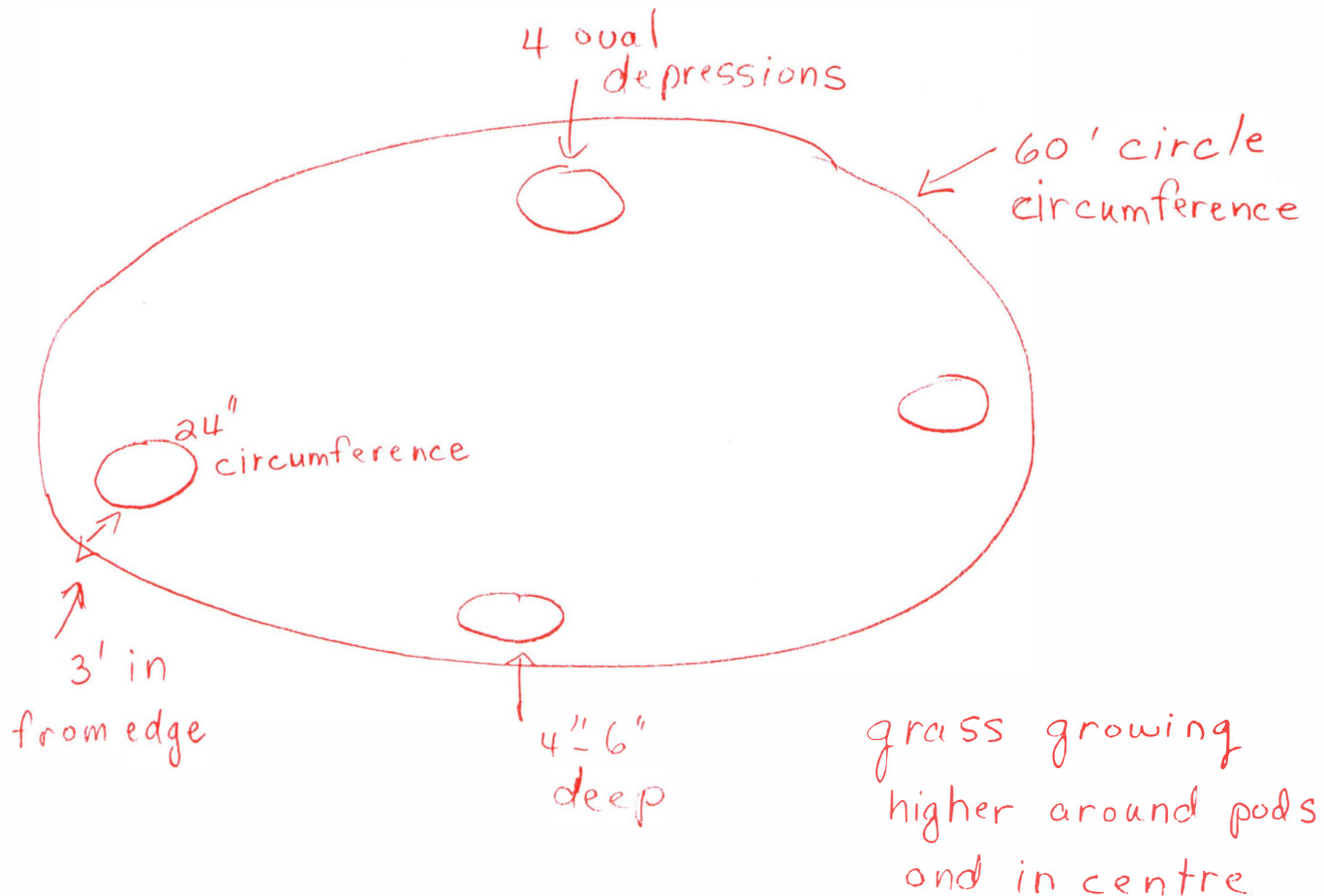
EXT: SECOND PART OF NEWSLETTER "PONDER THIS" ACCOMPANIED WITH HOAGLND'S "MARTIAN HORIZONS" GROUPS REPRESENTING FURTHER PHOTOGRAPHY AND RESEARCH DEALING WITH MARS INCLUDING A LETTER WRITING CAMPAIGN TO PLACE EMPHASIS ON SPACE EXPLORATION IN THE FALL OF 1992 OR WHENEVER!.....TO INTENSIFY PHOTOS OF CYDONIA, MARS.

REC:" INNER GRID SYSTEMS" BY BRUCE CATHY, " SOURCE OF MEASURES BY RALSTON SKINNER, " PYRAMIDOLOGY FOUR VOL." ADAM RUTHERFORD, "THE SECRETS OF THE GREAT PYRAMID", "MYSTERIES OF THE MEXICAN PYRAMIDS" BY P.TOMKINS, "PSYCHOMATHEMATICS" BY CONNERS, "THE KEYS OF ENOCH" BY HIERTAK, " VIEW OVER ATLANTIS" BY JOHN MICHEL ETC.

"PYRAMID ENERGY-THE PHILOSOPHY OF MAN" MARY AND DEAN HARDY AND MANY OTHERS

12

Gerald was coming back from a fishing trip and dropped in to see his uncle in May of 1977. His uncle showed him landing marks in a field which had occurred between Xmas and New Year's eve of 1976. The location was to 5 to 6 miles from his uncle's home, north of Lake Scugog. Two farms were nearby. The land belonged to one of the farms. Farm $\frac{1}{4}$ mile away, kids from both farms playing outside after dark, at the rented farmhouse, they saw an object touch down. Both families moved away, quite upset. The field was covered with rough grazing grass and thorn trees, was swampy on both sides of road. Saw grass outline of area where landing occurred. Landing in rough pasture. Grass swirled counter clockwise, grass around landing area shorter. Grass dark color, as if burnt in the circle. Grass grew better inside circle, as if being stimulated. Livestock eating grass up to landing, but not in it. Saw 4 oval shaped imprints in ground, just inside of circle, about 3' in from edge of circle, could put feet in the depressions, about 4-6" deep, 24" in circumference. Paced circle where grass taller, no weeds. Electric watch stopped when went in circle to pace it off, 60' across circle. Gerald took several pictures of the landing. These photos follow.





grass swirled
counter clockwise



grass grew better
inside ring, as if
being stimulated



grass shorter
outside of ring



edge of
ring



note grass
much higher
in ring



ring oval
shaped



pod marks where
it touched down
could put feet
in depression

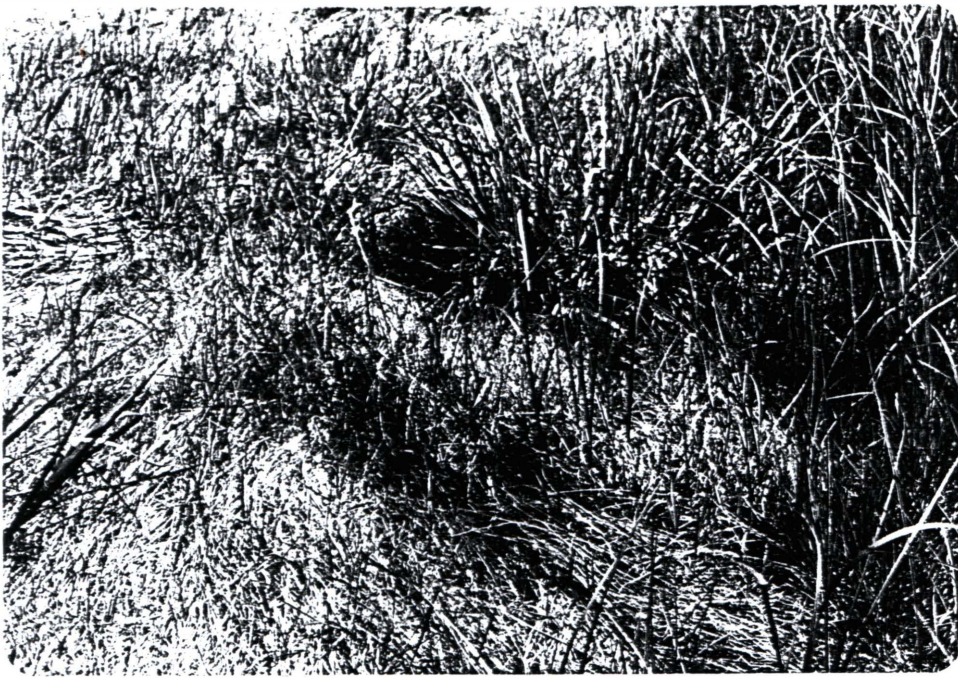


3 areas where
oval imprint in
ground just outside
of circle



grass dark color
as if burnt
or dehydrated





3 areas where
oval imprint in
ground just outside
of circle



grass dark color
as if burnt
or dehydrated

new growth
growing up in it





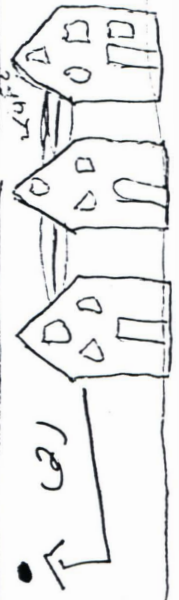
Clumps pulled
out

An article about the group was in the Nova Scotia paper. A lady called me from Nova Scotia to tell me about a very strange experience she had when she was a kid. She remembers it vividly to this day. She put the information down on paper and mailed it to me. Her report follow.



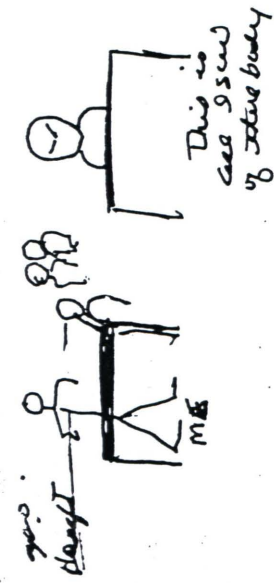
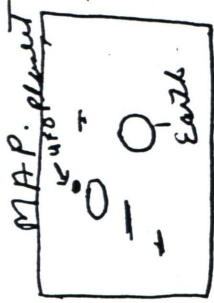
41 40

Row of 4 lights
orange & yellow
& red



My sister & I saw this USF apr. 1967 in New Brunswick but my sons were asleep in the car. apr 11/30 at night we came into a small town we saw first lights flashing behind a row of buildings it looked lot like search lights they use in country Jais. When we saw a moving object between the skys (like above) as we drove on out of town it followed us along the road for a short spell. It looked like (1) it had a row of windows, fluorescent yellow orange lights they were not flashing. It made no sound nor did it interfere with my car. We were a little afraid & looked the car down as we went up a hill the USF disappeared. It did not turn but we saw a streak & a small light miles away to the right My sister thought it may have landed on the rd over the hill & said what will we do if it's there. My reason was if it is

2
 We better get out & try stick as it must be a lot smarter than us so will just try to be friendly. Of course it was gone. A hr or so later we tried to sleep but could not so drove straight through to N.S. My sons were young & neither one woke up.
 I have a little confusion on which direction I was driving I somehow feel when I first saw the light they were on my left but when it followed us out of town it was on my right.



This one I'm really confused about. Apr 1974 I was in bed & I woke up with a small craft beside my bed.



I sat up. The one said without talking for me to come with them. I believe I laughed because first I thought I was dreaming & then I said I'm to big for that ship. I don't remember anything else until I was standing at my kitchen table & the 3 very short apo 4 ft one was talking to me again the other two stood back he was showing me a map its showed me where they came from he said (again without talking that it was a very small planet & as yet could not be seen from earth being obstructed by a larger planet. I asked if I could keep the map as my mind thought ok

Next now I twice have proof to show someone but I guess they need my mind. The leader said you + one of the others said no we cant because she is going to tell they then disappeared with the map. I stood there trying to think for maybe 12 hr before returning to bed.

I saw slanted eyes cant remember a nose or mouth they were a grayish white. Do not remember cloths but only remember seeing them from shoulder up. Narrow shoulders. Heads almost as wide. very friendly.

3

This is the one I will never forget & most concerning to me & somewhat hope to be hypnotised to find out if there is more to it.

One night around 11 PM approx 1985 my then friend Jim & myself left our friend's house to watch some 8 blocks away. Turning the corner we saw at first looked like a car with one light. All of a sudden I became very afraid & I pulled Jim by a hand & said we have to get out of here (I don't know why). The next thing we knew we were sliding down a bank & running scared ahead of us was a bridge with a broken beam approx 8 by 8. On the right hand side under the bridge and on a hill was a small village he called it a Hogel & Dattel village I called it a small German village. On the top of the bridge to the left was a tall approx 7 ft Black man leaning over & smiling down on us with a amused look I tried to run under the bridge toward the village Jim pulled me back toward

3 2nd page 1

The way we came. (He later said no way was he going under the broken beam on bridge). The next thing we knew we were sitting very close, tight up on my chesty held with our hands falled. Came to look at each other & said how did we get here & where were we. We talked for a while & then phone our friend to see how long we were gone. He was not sure as there was a dinner party there. The next day our friend & ourselves searched everywhere within 1/2 mile to find anything or anyone we could have been. No such place exists, when you hear the tape remember we both were drinking to see if either of us would say anything different (no way) we are now no longer a piece the tape was made 2 yrs after we broke up. We told everyone about it some thing we don't do much. My grandpa think I'm telling them fairy tales. I just want to know what happened & probably will never know. The only ones who believe are the few friends or family that also saw something unexplained

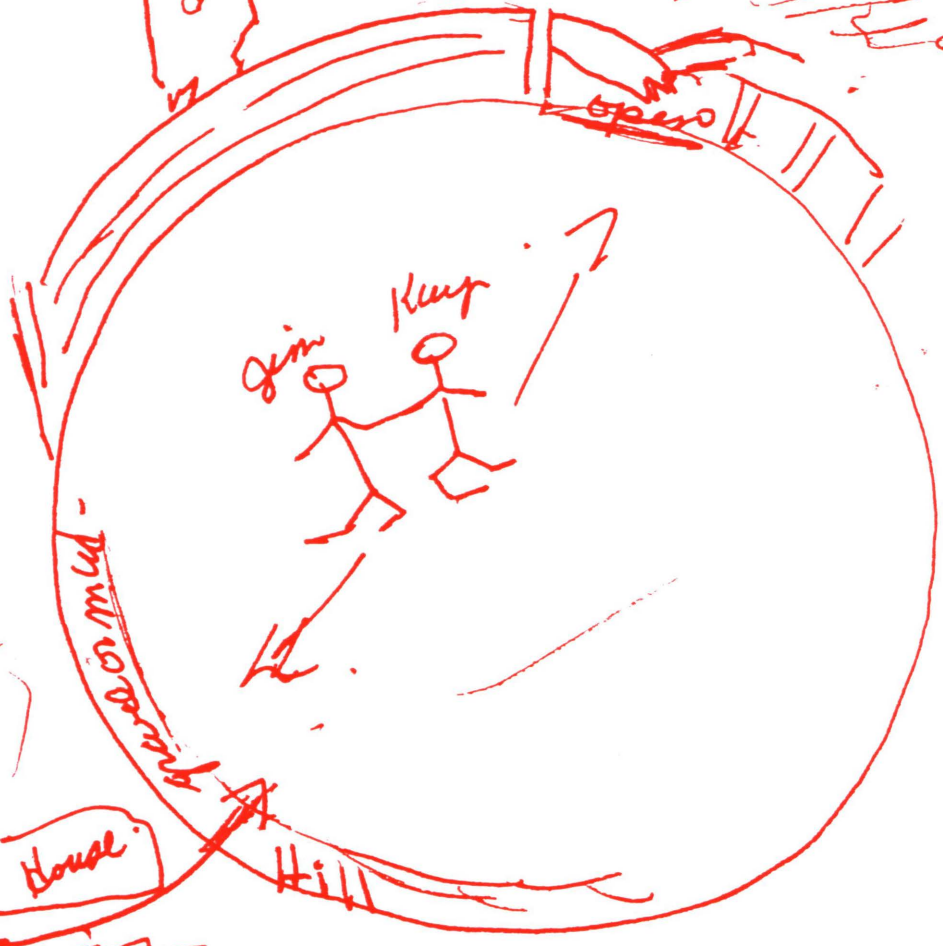
3 my house

Jim & I tape with this one

Black Man over 7ft tall



left
O



House

House

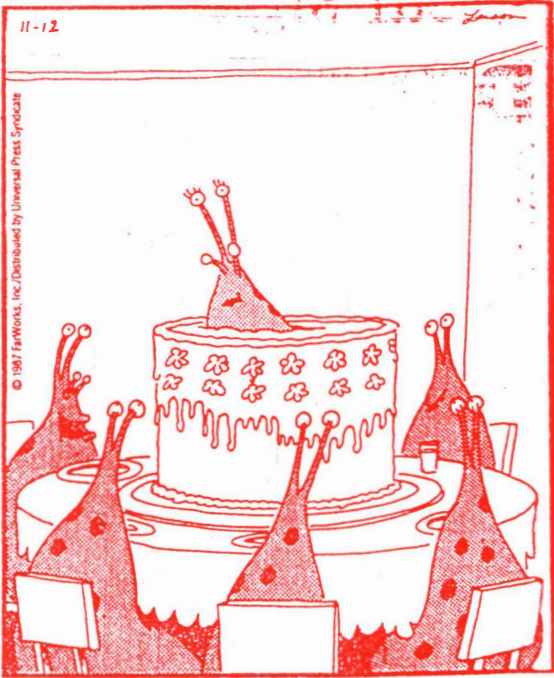
House

Rd

Rd



friends house



"Hey! Now her whole head is out! . . . This is getting better every minute."

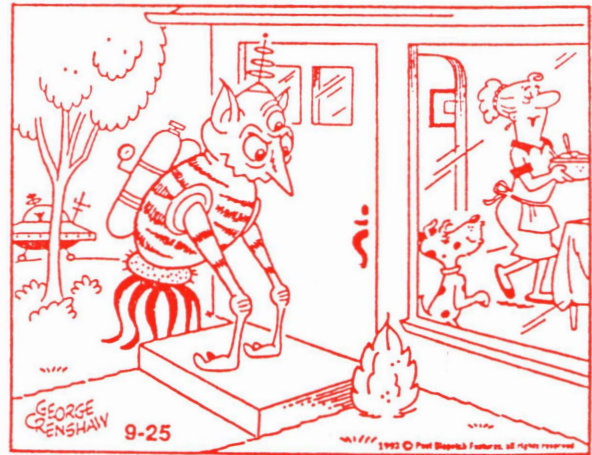


© 1992 Universal Press Syndicate

Belvedere



"Don't just stand there . . . call Oprah!"

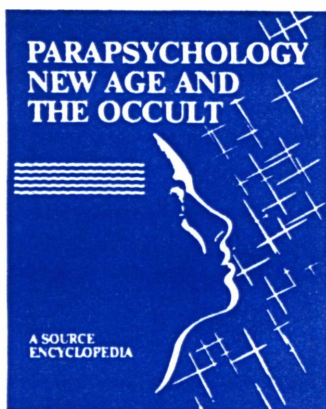


"OF COURSE YOU MAY INVITE A FRIEND TO LUNCH. BRING HIM IN."



"Take me to a lawyer."

Press Release



For Immediate Release
Publication Date: November 1992
For More Information Contact: Cheryl Klein Lacoff
203-629-4900, 800-786-6777 ext 121

** This book was sent to me for review and I highly recommend it for an instant source material on everything from UFO's Bermuda Triangle, Big Foot, all indexed for easy finding by subject matter, etc.

New Reference Sourcebook for Parapsychology, New Age and the Occult

More than half of the adult population in the U.S. is interested in some aspect of parapsychology, new age, the occult or one of the many topics related to these fields. Yet reference sources on these subjects are often difficult to find. But now you can find it all between the covers of this unique, new sourcebook, the first edition of, *Parapsychology, New Age and the Occult - A Source Encyclopedia*.

What organizations specialize in Astrology? Where can I find a museum dedicated to UFO's? Who are the leading experts in the field of hypnotism? What centers promote the practice of holistic health? Which magazines offer information on ghosts? What stores sell the best crystals? Which schools teach meditation? Where can I purchase a tape on dreams? Now you can get answers to all these questions and thousands more just by turning the pages of, *Parapsychology, New Age and the Occult - A Source Encyclopedia*. It's a remarkable new reference work filled with more than 10,000 hard-to-find sources covering 62 topics from Astrology to Yoga, as well as extensive information on the topic of Holistic Health.

Search out your sources by category (such as schools, products, centers, music, etc.) or in the easy-to-use topic index. Find even more sources in the extensive bibliography or periodical sections and in the Publishers Index. It is also an extremely valuable tool for any company or individual interested in promoting a product or service to the New Age field. *Parapsychology, New Age and the Occult - A Source Encyclopedia* is your complete guide to the New Age. It can be obtained from your local New Age bookstore or by contacting the publisher.

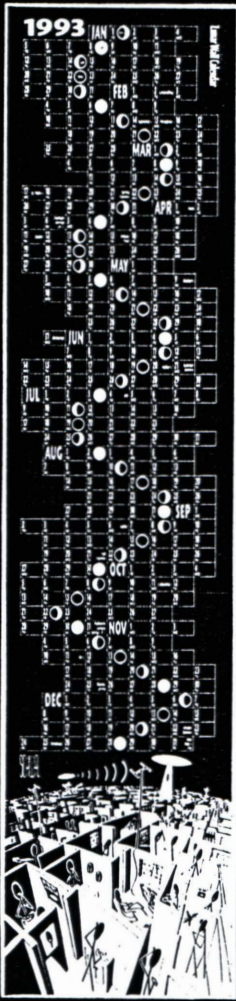
Parapsychology, New Age and the Occult - A Source Encyclopedia, 1993, First Edition, Edited by Cheryl Klein Lacoff, 526 pages, Softbound, 8 1/2" x 11", \$24.95.

REFERENCE PRESS INTERNATIONAL P.O. Box 4126 Greenwich, Connecticut 06830-0126
203-629-4900 800-786-6777 ext 121 Fax 203-622-5983

SCHWA



Book - 35 Fascinating B&W Drawings - \$6



8" x 36" Lunar Wall Calendar - \$6
3" x 15" Mini Lunar Calendar - \$1.50



Poster 1 - \$6



Poster 2 - \$6



Poster 3 - \$6



Alien Invasion Survival Card - \$1



2 Greeting Cards with envelopes \$1

To Get: Fill out this form: Qty. Amount

- _____ Books at \$6 each = \$ _____
- _____ Lunar Wall Calendars at \$6 each = \$ _____
- _____ Mini Lunar Calendars at \$1.50 each = \$ _____
- _____ Poster 1 at \$6 each = \$ _____
- _____ Poster 2 at \$6 each = \$ _____
- _____ Poster 3 at \$6 each = \$ _____
- _____ Sets of 3 Postcards at \$1 per set = \$ _____
- _____ Sets of 2 Greeting Cards at \$1 per set = \$ _____
- _____ Alien Invasion Survival Card at \$1 each = \$ _____

Complete Schwa Kit
Includes all of the above and more!
(Excluding posters and wall calendar.)

_____ Sets at \$9 each = \$ _____

TOTAL \$ _____

Name _____
Street _____
City _____
State _____ Zip _____

Make check or money order for the total above payable to:

Schwa
P.O. Box 6064
Reno NV 89513-6064

Clip and mail this card to the address above. All postage and handling charges included. Allow a few weeks for delivery.

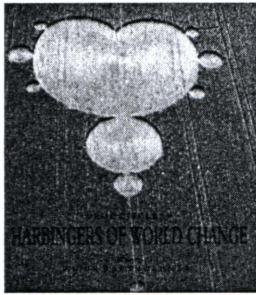
EVERY PICTURE TELLS A LIE.

38 pages of humorous drawings tells you why. Discover how political power *really* works as "Aliens" battle it out with Earth. New graphic style uses hidden symbols to explain *everything!* Send \$6.00 per book or SASE for catalog and free surprise.

SCHWA
Box 6064, Reno NV 89513

Check or money order. 100% guaranteed.





CROP CIRCLES: HARBINGERS OF WORLD CHANGE

ed. Alick Bartholomew

The crop-circle phenomenon, now common in Britain, has now become truly international, multi-faceted and deeply dimensional. How the circles are formed continues to elude conventional explanation, and now the research is becoming holistic, moving into the question for what purpose?

Many see the phenomenon as a sign of nature's reaction to human and environmental crisis. This book explores this dimension, bringing together a range of authors who see a variety of linkages and angles. The basket of themes in Harbingers includes: the crises facing humanity and the world; how energies work in the landscape, and their effect on people; dowsing and healing; symbolism in the circles, and their connection with ancient cultures; channelled information; the major events of 1991, and up-to-date insights into unusual connected phenomena. However, Harbingers is not only about crop-circles: it questions the nature of reality itself. 222 x 197mm, 32pp colour, 24pp b&w illus, 192pp. Rights: Gateway. ISBN 0-946551-89-8, p/b, £9.95.

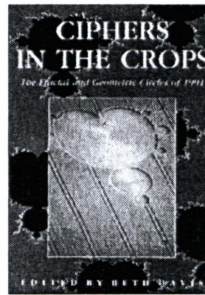
CROP CIRCLE POSTERS

Six remarkable full-colour crop circle posters

1990 series (490x680mm):
Alton Barnes; Crawley Down, Barn Field, The Gallops.

1991 series (350x490mm):
Barbury Castle; the Mandelbrot.

£1.60 each, £1.40 for two or more (incl VAT and post)



CIPHERS IN THE CROPS

The Fractal and Geometric Circles of 1991

ed. Beth Davis

A special study of three advanced pictograms, the Mandelbrot Set of Cambridge, the Barbury Castle Tetrahedron and the Serpent or Brain DNA formation. These demonstrate a high-level cosmic intelligence in the Circle-makers, and a depth of meaning which is examined in this profound little book, by a variety of authors. An interesting gift, and a record of a high-point in the evolution of the circles.

210 x 148mm, 14 colour, 10 b&w illus, 88pp. Rights: Gateway. ISBN 0-946551-93-6, p/b, £5.95.

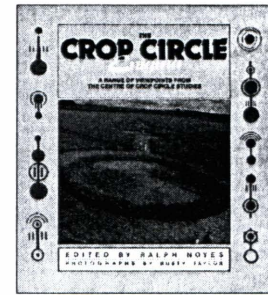
CROP CIRCLE POSTCARDS

Two sets of 8 colour postcards each from 1990 and 1991 events

1990: 1. Winterbourne Stoke quartered circle; 2. Crawley Down pictogram; 3. The Alton Barnes classic; 4. Alton Barnes ground view; 5. East Kennett double pictogram and Silbury Hill; 6. East Kennett ground view; 7. The Gallops, 'Gaia' and 'Battlestar Galactica'; 8. Barn Field, ground view.

1991: 9. The Mandelbrot; 10. Barbury Castle & the Ridgeway panorama; 11. Barbury Castle overhead view; 12. The Octopus curlygram; 13. Six-Petalled Flower, Chilcomb Down; 14. Mr Curlyman; 15. Stonehenge Insectogram panorama; 16. The Serpent or Brain.

£2.50 per set (incl VAT and post), or for any eight cards



THE CROP CIRCLE ENIGMA

A range of viewpoints from the Centre for Crop Circle Studies

ed. by Ralph Noyes

Mysteriously swirled circles which have been appearing in beautiful geometrical arrangements in the crops in Southern England and other parts of the world have become an international controversy. This book brings the whole question into focus, presenting a range of viewpoints - including reports of unusual sounds and light effects, with some surprising suggestions about causes which lie nearer to metaphysics than to conventional physics. Illustrates and includes discussion of the complex 'pictograms' which appeared in 1990.

Members of the Centre for Crop Circle Studies have cooperated in this joint report of all that is understood to date: they include a professor of astronomy, a physicist, two engineers, a dowser, a farmer and an archæologist. This is an important contribution to the body of knowledge on this and related subjects.

222 x 197mm, 68 colour & 62 b&w illus, 192pp. Rights: Gateway. ISBN 0-946551-75-8, p/b, £9.95.

1993 CROP CIRCLE CALENDAR

A full size, quality series of twelve photos showing the evolution of the phenomenon, with facing page for each month. £6.95 (plus 60p post)



Gateway Books
The Hollies, Wellow,
Bath BA2 8QJ

ORDER FORM

Orders by phone - 0225 835127 or fax - 0225 840012 welcome

DATE: _____

Please send to:

NAME _____ SURNAME _____
 ADDRESS _____
 POSTCODE _____

Qty	Title/Author	Price	Total

Cheque enclosed
 Post Giro Account N° 50 406 1402 (Bootle)
 Visa/Access/MasterCard/Eurocard

Subtotal _____
 Postage _____
Total _____

Card N° _____ Expiry Date _____
 Name (if different) _____ Signature _____

14
12
10
..9
..1
16
..8
..9
..8
..3
16
15
..4
12
..3
..3
10
10
12
10
16
13
14
..6
16
13
10
16
10

Trade orders to:
Ashgrove Distribution,
4 Brassmill Centre,
Bath, BA1 3JN, UK
Tel: 0225-425 539
Fax: 0225-319 137

Mail order & editorial:
Gateway Books,
The Hollies, Wellow,
Bath, BA2 8QJ, UK
Tel: 0225-835 127
Fax: 0225-840 012

Publisher: Alick Bartholomew
Sales & admin.: Christine Nalder
Editorial: Palden Jenkins

Front cover: a batik by Thetis Blacker from
A Pilgrimage of Dreams (Turnstone 1973)

Overseas distributors:
U.S.A.: Atrium Publishers Group,
The Great Tradition,
11270 Clayton Creek Rd, Lower
Lake, CA 95457 [707.995-3906]

Australia: Astam Books,
162 Parramatta Rd, Stanmore,
NSW 2048 [02.550-3855]

New Zealand: Tandem Press,
PO Box 34-272, Birkenhead,
Auckland 10 [09.480-1452]

South Africa: Faradawn,
PO Box 17161, Hillbrow 2038
[011.484-2701/2]

Canada: Temeron Books Inc,
210, 1220 Kensington Rd N.W.,
Calgary, Alberta TN2 3P5
[403.283-0900]

Mail order:
If a book is not yet published,
don't send money for it. Tell us
you want it and we'll bill you
when it arrives. Please add £1
postage per title, or 80p each for
two or more. Orders over £15 are
post-free. Cheques payable to
Gateway Books. We also accept
Visa and Access.

Mailing List:
We are not in the habit of sharing
our mailing list with other
organisations. Also, if we do not
hear from you within a year, we
tend not to send you more
information about our books - so
keep in touch!

Happy to be of service.



©JACK VARTOGIAN

An artist whose work has appeared in the Guggenheim Museum, Hopkins has had little time for painting or sculpture since writing *Intruders*.

Aside from *Communion*, two other nonfiction books recently issued by major publishing firms claim to chronicle meetings with extraterrestrials. The more plausible, *Intruders; The Incredible Visitations at Copley Woods*, (Random House, \$17.95) written by UFO investigator Budd Hopkins, offers up accounts of intimate, disturbing experiences that begin in childhood and engender psychic disturbances like the ones that Strieber suffered.

Strieber's account of "kidnappings" which may have begun when he was 12

has drawn serious reviews. And Middle America has risen up to declare that it, too, has witnessed weird things. On talk shows, callers check in not to poke fun, Strieber says, but to report their own close encounters. By this month readers had sent him more than 1,000 letters detailing everything from sightings of alien craft to crossbreeding experiments conducted by humanoids.

The Illinois-based Center for UFO Studies reports that requests for information have "increased greatly" in the last few months; membership in the 1,500-strong Mutual UFO Network, a Texas-based investigatory group, has increased by roughly 10 percent in the same period. And the public response to the November UFO sighting by a Japan Air Lines pilot has been such that the federal government now offers information kits on the incident; for \$194.30, one receives a packet that includes Kenju Terauchi's drawings of the craft that he encountered.

On the pop-culture front, the theme has emerged in one noteworthy context of late: The cliffhanger episode of *The Colbys* saw Fallon (portrayed by Emma Samms) disappearing into the sunset—not in a regulation plane crash, but in the bowels of a spacecraft that ambushes her car on a lonely desert road. "Richard Shapiro [the show's co-creator] has been aware of the recent interest in UFOs, and it was an effort to end the season on as provocative a note as possible," says supervising producer Bob Pollock.

There is no more controversial UFO tale than the one Gary Kinder, a 40-year-old writer based in Idaho, spent three years investigating. In the 1970s Eduard Meier—a Swiss caretaker offered films, tape recordings and shards of metal to support his claims of contact with emissaries from a distant star. Within the UFO community Meier is rejected as a fraud. Kinder still counts himself among the skeptics: In *Light Years* (Atlantic Monthly Press, \$18.95) he presents Meier's story without making hard-and-fast conclusions about the evidence. "There were times when I'd be sitting there watching Meier, and I'd think, 'This guy is just a very clever con man,'" says Kinder. ". . . If the contacts are true, of course it's the biggest story ever. If [not], it's a fascinating story about how this one-armed, sixth-grade-educated caretaker in Switzerland has been able to fabricate highly sophisticated evidence."

The scientific establishment has yet to embrace the notion that aliens are walking among us. "I think those books reach the height of malarkey," says Paul Kurtz, chairman and founder of the Committee for the Scientific Investigation of Claims of the Paranormal. "It's possible there is life in outer space, but I know of no really hard evidence that we have been visited by extraterrestrial beings." Still a growing number of reputable scientists are refusing to dismiss people like Strieber. Research psychologist Dr. John Gliedman is a "sympathetic skeptic" and a friend who witnessed Whitley's struggle: "We should keep an open mind about what's happening to him and to others," Gliedman says. "I see no evidence that you're dealing with mental illness here. But it's not a pleasant experience; people who believe they've been abducted talk about it the way others might talk about a rape. They need to be given help."

CONTINUED

Date: August 13, 1992
Time: 1:00 A.M.
Duration: 15-20 minutes
Location: Winona, Ontario

John was walking from his kitchen to the bedroom and looked outside. The back of his house is all glass, from floor to ceiling. He saw a bright light in the sky, it disappeared, then appeared in the sky a few miles away, taking only a second or so. It moved and started to come down and then another light appeared, a few miles apart. One light went out and then appeared a few miles away again. Both lights repeated this pattern continuously for up to 20 minutes. The color was orangish/blue, shape was round. They seemed to move in a triangular pattern.

John, upon seeing these lights went outside to watch and took his binoculars. Sky was partly cloudy, clouds were above the object, bright night, temperature mild.

The lights suddenly went out and disappeared.

John sat for the next $\frac{1}{2}$ hour watching the sky to see if the lights would reappear, but they did not.

He said that he sees planes all the time and this definitely was not a plane.

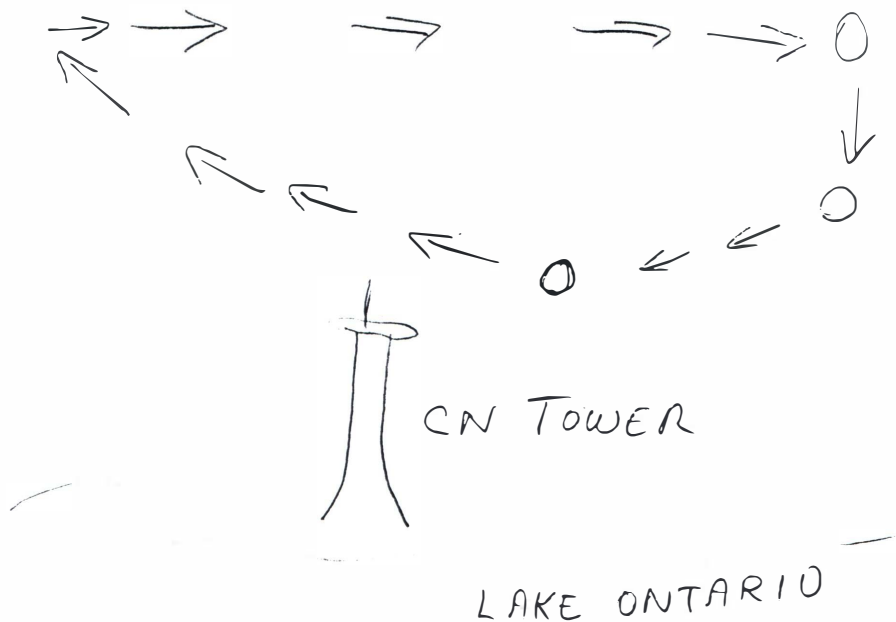
The lights appeared north east of the CN tower, John's home is across the lake from the tower.

He has not seen anything like it before.

He saw the sighting report in the Hamilton Spectator the next day and called the paper to report his sighting.

John had told his coworkers about the sighting, who were skeptical, but not so after reading about the sighting in the newspaper, which confirmed John's sighting.

A diagram of the movement of the objects is shown, along with the newspaper articles pertaining to the sighting.



OIL, LUBE, FILTER \$9⁹⁵

ROYAL AUTO GLASS
1154 Barton St. E. 548-0808

Metro

THE SPECTATOR **B**

Metro Desk 526-3423

HAMILTON—WENTWORTH

Saturday, August 15, 1992

Callers to Spec compare notes on possible UFO sightings

By IJEOMA ROSS
The Spectator

THERE WAS something up there Thursday morning — maybe.

It could have been a planet or a plane.

Or it's possible that the bright orange-colored light Joan Rehele saw was from outer space — possible.

But since the Rehele family's story and the videotaped picture of the object ran in The Spectator, four other people have called to compare notes on similar lights. Two other people have called and reported sightings completely different.

Two sisters who live in the Glanbrook area, not far from the Reheles, said they have seen the orange light before. In two separate sightings, one almost a year ago and the other this spring, the sisters have seen the light hovering around the trees over Binbrook.

"It kind of slowed down," said one sister who didn't want to be identified. "At first I thought it was a plane, but I didn't hear a thing. Some dogs were barking at it."

John Hamilton, who moved to the area recently, said he and his wife were driving about an hour and a half north of

Barrie early one autumn morning when they saw a bright white light about the size of three garbage can lids.

"I didn't take too much notice of it at first, but then it started to enlarge," he said. "It seemed to be closing in very rapidly. It went through three or four color changes."

Natural — or earthly — explanations of the light included a meteor, a plane and a planet.

Although it is the height of the largest meteor shower of the year, the Reheles couldn't have seen a piece of shooting space debris because their videotape lasts

more than two minutes, while meteors disappear within seconds.

Because there is both an airport and a private airstrip in the area, it is possible that it was a plane. McMaster physics and astronomy professor Doug Welsh said that a plane with all its approach lights on could at times look like the mysterious light, because as a plane lands there is a lot of atmosphere distorting the image.

The final suggestion Mr. Welsh could give was that about 1 a.m., when the object was seen, Mars was rising in the northeastern sky and would have looked reddish. The image on the tape appeared to jump because the human eye twitches

when focusing on a stationary object, causing a photographer to move the camera, he said.

Other sightings:

A Stoney Creek man said he saw two lights flying about the CN Tower in Toronto.

A 68-year-old MacNab Street man called in to say he saw a UFO over Hamilton early yesterday morning. He said there were seven lights emitting a dull orange glow flying in a triangular formation but making no noise.

As for the Reheles' object being a UFO, one thing is certain. It is unidentified.

Joan captures UFO

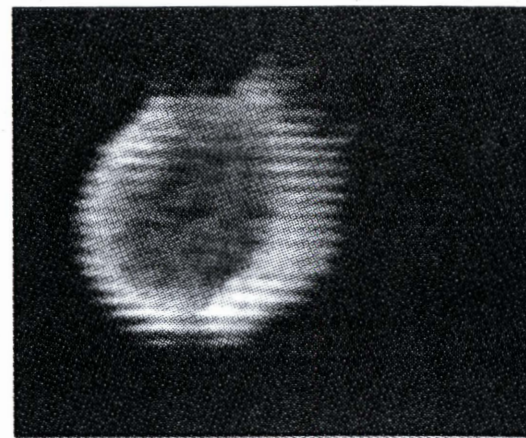


Barry Gray, The Spectator

Joan Rehele, right, son Kevin and granddaughter Crystal study videotape of mysterious light over Binbrook, below.

... on video

She's seen it half a dozen times before



By WADE HEMSWORTH
The Spectator
GLANBROOK — All the other times, Joan Rehele felt no one would believe what she had seen.

Now she feels better. Over the 21 years she's lived in Binbrook, Mrs. Rehele, 55, a self-described housewife, has spotted the same light in the same pattern in the sky half a dozen times before.

And very early yesterday, with the full moon shining, she saw it again.

She shut off her bedroom light, and it seemed brighter still, almost as bright as a light bulb in the sky, and somewhere between the size of a satellite dish and a pickup truck. There was no noise.

It seemed to be in the trees on the

far side of a field, between one and two kilometres (half a mile to 1¼ miles) behind her Guyatt Road house.

She ran to wake up her son Kevin, 14. It was about 12.50 a.m.

Kevin grabbed the video camera, rested it on the window sill, and picked up two minutes and 18 seconds of the light dancing up and down on the screen, impossibly fast, it seemed, for any conventional aircraft.

The Reheles live in the general area of Hamilton Airport and a smaller private strip.

But they are sure what they saw was no plane, helicopter or weather balloon.

Mrs. Rehele, along with Kevin, daughter-in-law Laura and two grandchildren, came to The Spectator with

the videotape yesterday afternoon, hoping to find some explanation or at least confirmation that someone else had seen the same thing.

Mrs. Rehele was reluctant to go on record.

"I don't want people to think I've got a screw loose or something," she said. "I'm not seeking any publicity. I just want people to believe what I have seen."

As the tape played, it became clearer that the mother and son are not trying to pull some kind of hoax. You hear their whispered voices as the light moves around the screen, seeming to leave behind a dark trail.

"Right in between the trees, Kevin," says the woman's whispered voice.

"Yes. I can see it. I'm picking it up,"

□ Continued on A2

A2 THE SPECTATOR, FRIDAY, AUGUST 14, 1992

Joan captures UFO on video

□ Continued from A1

comes back the boy's voice, also in a whisper.

"Can you get it?"

"Yes."

"Good."

"Yes, it's flashing."

"I wonder what the hell it is."

And today they are still wondering.

Hamilton Airport officials say there have been no reports of

unusual sightings in the sky, although they did say the time coincides with the airport's busiest hours, when couriers are most active.

Although Mrs. Rehele and Kevin are reluctant to jump to any conclusions, they keep getting pulled back to what seems the only logical explanation.

"It must be from outer space," she says.

FUTURE SHOP WILL B

An article concerning the "Crystal Skull" was in the local newspaper. Several members visited Anna Mitchell-Hedges' home to view the skull. I visited her home twice to see the skull, and attended two presentations she gave. I was very surprised on the contents of the newspaper article.

I have enclosed info on the Crystal Skull for those not familiar with this most mysterious creation. As per the older article, I was a member of the Waterloo-Wellington Society and also attended at that time.

I've enclosed pictures that were taken at her home.

THE FAR SIDE

By GARY LARSON



"I've done it! The first real evidence of a UFO! ... And with my own camera, in my own darkroom, and in my own ..."

Skull conceals its secrets

By MARGARET TEROL
Record Staff Writer

Like a woman, the crystal Skull of Doom is reluctant to reveal its age — or anything else about its mysterious past.

Neither scientists and archeologists, nor psychic researchers have been able to pinpoint the year of its creation.

When British psychic Simon Alexander said in a Canadian Weekend article last month that he could not "read" the skull's history any further back than 200 years, members of the Waterloo-Wellington Society for Psychical Research decided to give it a try this week. Especially since the skull is located in Kitchener, enthroned on a royal blue velvet on a table in the small living room of Anna Mitchell-Hedges.

Miss Mitchell-Hedges found the skull on her birthday, Jan. 1, 1924, while helping her adoptive father, Frederick Mitchell-Hedges, an English archeologist, explorer and author, excavate Lubantun, an ancient Mayan village in the former British Honduras.

Several members of the society have been practising psychometry — attempting to receive impressions from an object — for the past three years, and they decided to do readings on the skull, which Mayan Indians told Miss Mitchell-Hedges was god of their ancestors. The Mayans believed it was endowed with supernatural powers.

To prevent the power of suggestion from influencing them, members of the psychometry group did separate readings and wrote down their impressions independently.

When they compared notes later, they found several impressions were common. They all had the feeling it was used in some way to heal people in ceremonies performed by priests and priestesses, some of whom were light-skinned.

Two of the four, Trevor Bissel and Dr. Ken Keeling, "saw" crude surgical instruments nearby and Keeling saw figurines in the form of birds and snakes. He also "saw" reddish clay in the area.

These images were later confirmed by Miss Mitchell-Hedges, who said they did find pottery made from the reddish clay and beads carved in the form of human heads, birds and snakes with the skull.

Keeling also said he felt the skull had been taken away and hidden for some time to protect it from attacks on the village and Bissel "saw" the skull sitting high above an altar in a building with an open shaft in the ceiling, but there is little evidence about the building when it was found.

Anna Spee felt the skull was not only able to heal, but also able to "change people's thoughts," and she "saw" high terraces rising to a precipice." Miss Mitchell-Hedges confirmed there were stone terraces and a 10,000 seat amphitheatre among the ruins.

Other members of the group only received physical sensations from the skull. They felt warmth generated from around the detachable jawbone while the top of the skull felt cool.

The skull, with its finely polished transparent surface, is a work of art. It is a faithful reproduction of a human skull, even to the tiny bumps found on human craniums. The hollow eye sockets are conical and have an almost hypnotic attraction for the viewer.

The detachable jaw contains 32 teeth and can be opened.

What scientists have discovered is that the skull was made from a single hunk of rock crystal without the use of tools. It is one of four in the world, but the only one that is life-size. The other three are in a private collection in Italy, the Paris Louvre and the British Museum.

Frank Dorland, a California biocrystallographer, who studied the 11½-pound skull for six years, took it to a company specializing in grinding precision crystal oscillators. But even under the highest magnification no evidence of any tool marks was found. The company also could not date it.

Mitchell-Hedges, in his book, *Danger My Ally*, wrote that Mayan legends say the skull is 3,600 years old and was made by five generations of one family of high priests over a period of 150 years. It was sculpted by constant rubbing with a sand and herb mixture "all the days of their lives."



INDIAN MYSTERY — Anna Mitchell-Hedges of Kitchener says she won't part with her crystal treasure, which she found while excavating Central American Indian ruins.
Record Photo by Brian Clark

Although both the governments of Britain and Belize (the modern name for Honduras) are seeking the skull, Miss Mitchell-Hedges has no intention of parting with it.

Although her father never explained in his book how he obtained possession of the valuable artifact, she said he was given the skull as a parting gift by the Mayans in appreciation of the aid he gave them.

"He provided them with medicines and supplies and brought in doctors, and they looked up to him as a white god."

Miss Mitchell-Hedges dismissed Simon Alexander's prediction that she would not have the skull much longer; that it would be removed from her possession within a year.

"I won't part with it until I die," said the 73-year-old, Port Colborne-born woman who was adopted by Mitchell-Hedges when she was a 10-year-old orphan.

"Then it will go to a nice, private museum in England."

In addition to calming her when she feels nervous or upset, she feels it warns her about evil people or people she should avoid contact with. Also on a couple of occasions, she said, it warned of an impending tragedy — the deaths of President John Kennedy and Lord Louis Mountbatten.

It does this by sweating or by the image of coffins within the skull.

She says its most recent warning of bad news occurred within the past couple of weeks, before one of her two beloved pekinese dogs died while in

quarantine in England. She had sent the dogs over ahead of time because she and her companion-secretary, Cynthia Cowles, are planning to move back to England as soon as she sells her townhouse at 18 Glen Avon Cres.

She called on its evil power to bring about death (according to Mayan legend) only once, Miss Mitchell-Hedges said.

"He was an evil man," she said. He had been in charge of raising funds through the sale of pictures and postcards of the skull at the San Francisco World's Fair for a church which planned to buy the Russian Black Virgin of Kazan icon from her. He collected more than \$200,000 but kept the money for himself, she said.

Whether it was the skull's power or coincidence, the man died about three months later.

But whether the Skull of Doom has supernatural powers or not, it has attracted international attention. Celebrities such as actors Peter O'Toole (who searched for it for 12 years before locating it in Kitchener) and William Shatner of Star Trek fame have beaten a path to her door.

The skull has appeared on television and in a movie entitled *Mysteries of the Gods*. And more than 100 Twin Cities residents have filed through her living room to glimpse the skull after reading about it in *The Canadian Weekend* magazine. It is also the subject of a book, *Gifts of The Crystal Skull: The Dorland Discoveries* by Alice Bryant, which should be on the market this spring.

K-W RECORD NOV. 5/92

Donors raise questions about future of crystal skull

By Margaret Terol
Record staff

A Kitchener woman says she's getting enquiries from people across Ontario about the fate of the crystal Skull of Doom that was once kept in a private Kitchener home.

"They also want to know why the skull left Canada when they donated money for a foundation to keep it here," Hermina van Herpt of Glen Avon Crescent said in an interview.

Van Herpt said the phone calls have been coming "on a regular basis" since the skull, said to be an ancient Mayan artifact, and its owner, Anna Mitchell-Hedges, moved to the United States.

One of the calls was from a Niagara Falls, Ont., woman who said she had donated \$500 towards a foundation, said Van Herpt, who purchased her home from Mitchell-Hedges.



Skull of Doom

Over the dozen or so years the skull was kept in Kitchener, Mitchell-Hedges collected donations at her home and at lectures she gave. The purpose was to set up a foundation so the skull would remain in Canada, said Van Herpt, who lived with Mitchell-Hedges for seven months in Kitchener and assisted her with lectures.

She said Mitchell-Hedges also raised money from the sale of pictures and videotapes of the skull. Pictures sold for up to \$18 and videotapes for \$75.

But to date, no foundation has been set up and the skull was taken to Valparaiso, Ind. last February, Van Herpt said. She said she believes the skull should be put on public display and not be used as a "money-making object."

Van Herpt said she visited the 85-year-old Mitchell-Hedges at her home in Valparaiso in the summer of 1991 and attended a meeting there with lawyers to draw up legal documents for a foundation. But it was never established.

"Anna told me later there was no money" to operate a foundation, she said.

Mitchell-Hedges said in a telephone interview from Valparaiso, however, that a foundation will be set up soon to protect and care for the skull after her death. But she said she "couldn't divulge any information" until the foundation is established.

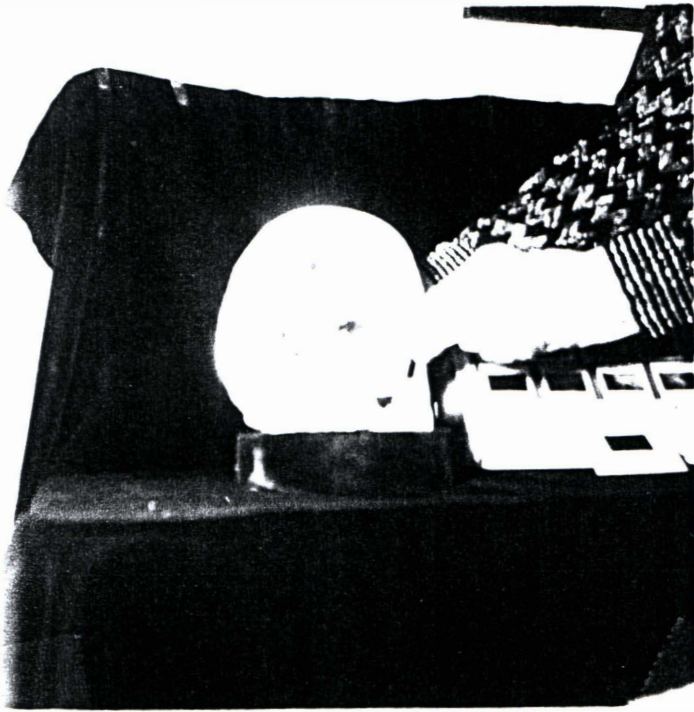
A number of Mayans from Belize and Mexico have come to see the skull and they told her it could be more than 100,000 years old, she said. However, other authorities have discredited the age and source of the skull.

Believed to be one of only four in the world, the skull is life-size, has conical eyes and a detachable jaw bone with 32 teeth.

Mayans told her they believed the quartz crystal skull was endowed with supernatural powers for healing, Mitchell-Hedges said.

In a 1980 interview she claimed the skull was discovered by her and her adoptive father, Frederick Mitchell-Hedges, an English archeologist, explorer and author, on Jan. 1, 1924, while they were excavating at Lubantun, an ancient Mayan village in the former British Honduras, now Belize.

It was given to them by Mayans as a parting gift in appreciation for the medical supplies and doctors her father brought to the village, Mitchell-Hedges said.

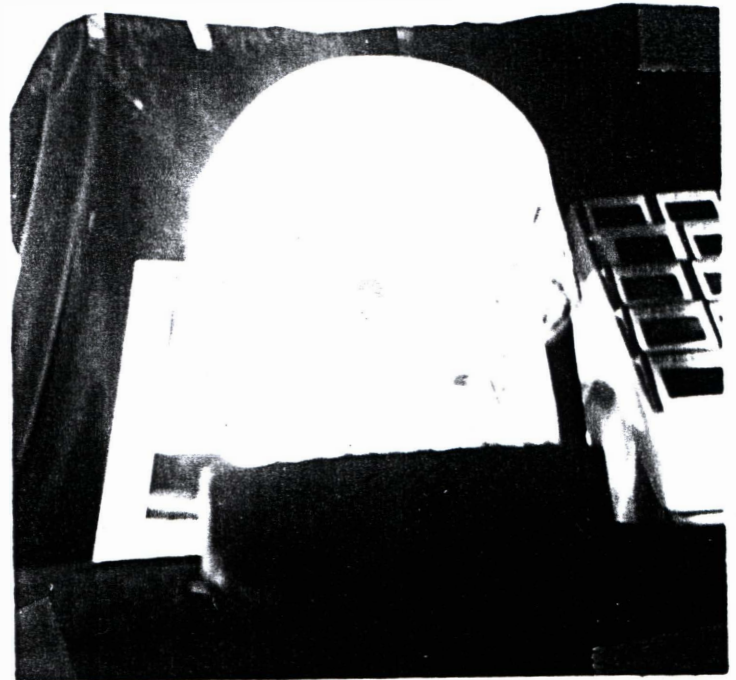
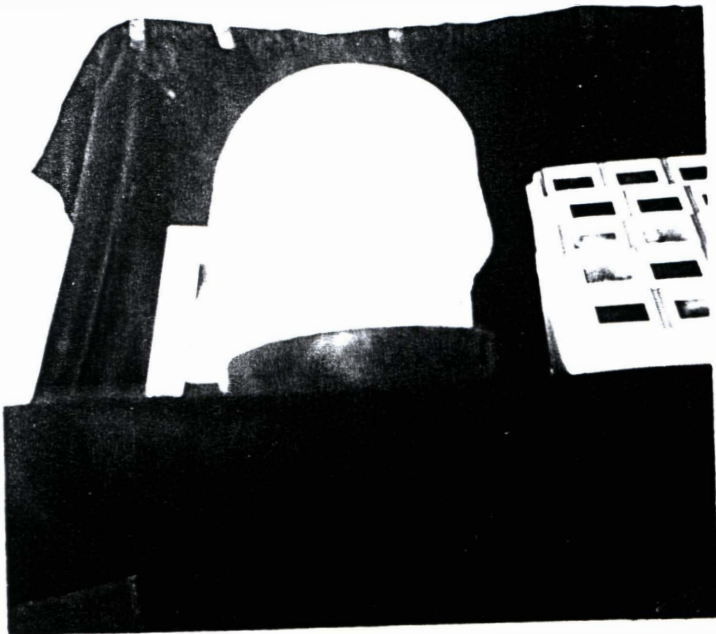


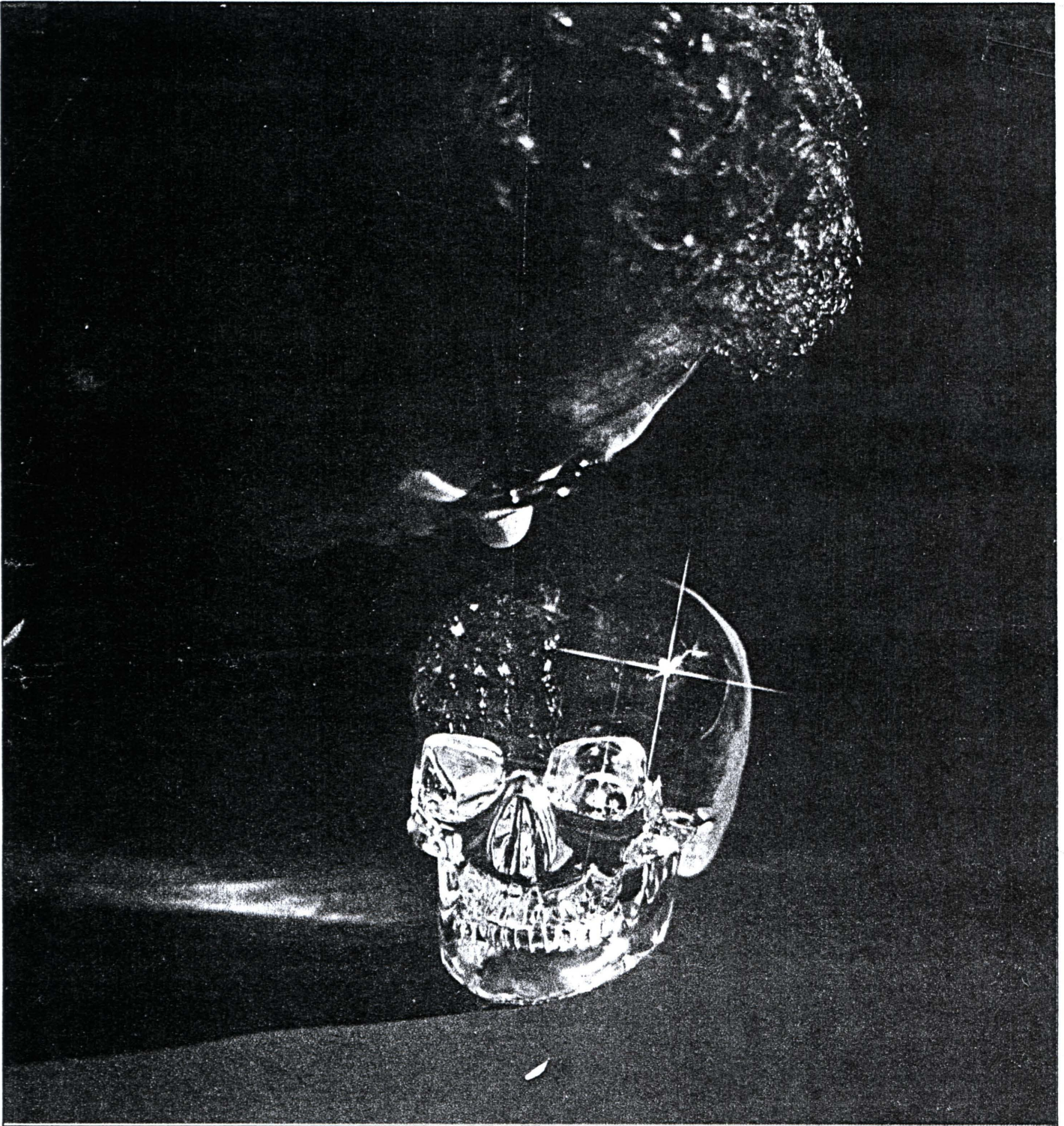
NOV 14
10 30

Anna Mitchell-Hedges, F.R.G.S.

78 Glen Avon Cres.
Kitchener, Ontario
N2N 1C3

(519) 576-4209
VISITS BY APPOINTMENT ONLY





Simon Alexander, an English clairvoyant who does regular private readings in Canada, agreed to give the Skull a free one. It isn't a fake, he pronounced, but he doesn't think Anna Mitchell-Hedges will have it much longer

THE CASE OF THE CRYSTAL SKULL

A god of the Mayas — or a skeleton in the closet?

BY KASPARS DZEGUZE

On that New Year's Day, 1924, the sunshine poured like theatrical lighting through a tear in the jungle foliage, illuminating the stage on which Anna Mitchell-Hedges was unwittingly acting out the events that would complicate her life forever.

The young girl from the Ontario town of Port Colborne was standing in the glare of the tropical sun over British Honduras when something dazzling caught her eye, something half-hidden under the green cobweb of vines that gripped the ruins of the lost Mayan city of Lubaantun.

Anna tore the glittering object from the ground with her bare hands and gazed, awestruck, at the transparent skull she held. The Indians around her fell back in reverence.

"They recognized the Skull at once as the long-lost god of their ancestors," she explains now, in the rounded, precise, mid-Atlantic tones she's acquired in the 55 years since then. "They were enthused but terrified, because they knew its power over life and death."

Unknown hands had whittled it down to 11 pounds, 7 ounces, to form an anatomically correct human skull — 3,600 years ago, according to Indian legend. But to skeptics, Anna's find — known ever since as the Skull of Doom — was nothing more than a chunk of rock crystal, a substance almost as difficult to carve as diamond. Some cynically suggested that the hands of her adoptive father — a British gentleman-adventurer and amateur archeologist, Frederick Mitchell-Hedges — had conveniently planted the Skull for Anna to find. It was, after all, her 17th birthday.

Today the alien god has temporarily settled for middle-class exile in a row house on the outskirts of Kitchener, Ontario. It's the kind of tract, instantly distinguishable from Mayan civilization, where the streets fold upon themselves like intestines and the way to tell one house from the next is by the color of the front door. Those who pass (by appointment only) through the red door that leads to the Skull's living room shrine are attracted by the stories of its power. Anna Mitchell-Hedges — "please call me Sammy; father always did" — was a skeptic herself in 1924, but says she has since discovered that at least

some of the magical powers the Indians claimed for it go quite beyond the force any normal skull ever had.

Sammy became the Skull's keeper until, not without argument, her father took it away when they left British Honduras in 1927. In Paris during the '30s, some of Sammy's smart friends who dabbled in psychic phenomena told her they found the Skull "disturbing." The Skull was by now outfitted in its own travelling case of blue velvet and went everywhere with father and daughter. But Sammy was still far from being convinced the Skull had any occult power except for primitive minds.

Her doubts were swept away forever one day in 1942 — Sammy was now living in England — when Adrian Conan Doyle (youngest son of Sir Arthur Conan Doyle, creator of Sherlock Holmes) came to visit. "He was unsettled from the first. He felt the presence of something strange, almost ominous. And he didn't know I had the Skull at the time.

"We soon found it was the Skull that made him go twitchy. It got so he could tell me which room of the house it was in — and then he'd never go in that room. I tried to trick him but he always knew it was there, even when I claimed it was in the next room."

Sammy was wary now, watching for the next display of the Skull's power. She hadn't long to wait. During the latter stages of the war, the Mitchell-Hedges entertained Allied soldiers — Generals Omar Bradley and Eisenhower among them — at Burgate Manor, their country home in Hampshire.

"At the very first party our neighbors' butler served. He claimed he felt something chill and forbidding about the house. He came back a second time and a third, but then wouldn't return, saying there was something evil there. So we did without him and forgot the incident.

"A while later, I was moving to another house and carrying the Skull in its case down a long, long corridor to the car. I was halfway along when the phone rang. I had to put down the Skull to answer. It was an angry, male voice — our neighbor. 'Sammy, are you touching that darn Skull of yours?' he demanded. 'Something has knocked my butler right off his feet. He's lying on the floor, quite rigid and unable to talk.'

"I couldn't believe it. That neighbor lived 20 miles away! The butler certainly believed it was the Skull. He quit their service because, he said, their friends were evil."

Seventy-three in three days' time, Sammy is now the very model of white-haired, tea-in-the-afternoon gentility, a woman who has counted the Duchess of Windsor among her friends. "I've simply come to believe," she says, "that the

"Sammy — are you touching that Skull of yours? Something has knocked my butler off his feet"

Skull returns good to you if you mean good, and evil if you've evil intent. I know many people who've visited agree with me — as I think Peter O'Toole did." O'Toole, actor and amateur archeologist, visited the red-door shrine twice. "I left him upstairs to meditate with the Skull for several hours. I've done that for a good number of people.

"Why shouldn't I share something so beautiful? There are only two other crystal skulls in the world, and they're locked up in museums. The one in the British Museum isn't too bad, though it can't talk like mine. See, the lower jaw is a separate piece — I found it three months after I found the Skull itself. The Mayan priests would attach threads that let them work the jaw; inside the darkened temple, it looked as if the Skull was telling the people what to do.

"There's another skull, much smaller, in Paris, in — is it the Museum of Man, Cynthia?" she calls to her companion of 25 years. "Yes," says Cynthia Cowles, who acts as majordomo, bouncer and memory aide.

"That skull in Paris is very primitive in comparison with this," Sammy says, walking to the table where the Skull rests on its altar-throne of blue velvet. She picks it up gently, much the way a mother might take her infant from its crib for visitors to admire. The Skull is certainly a member of the household —

and a valued one, too. "I recently turned down \$400,000 from an American collector," says Sammy, saddened that someone would think her loyalty was for sale.

She gazes into the Skull's clear depths, like a mother who can always find something new in her progeny. "There are seven faces inside the Skull — see the beautiful woman's head along this edge? And that lion's head over there? There was a coffin inside it, in the middle of the skull, for the longest time. One of the neighbors could see the lid open and close, open and close. It did that for weeks and weeks... until they got poor Louis Mountbatten. Then it disappeared."

The Skull doesn't merely reflect the grand events of the world. Like a retired artist it keeps from going stale in the suburbs by performing the occasional small wonder: the allergy cure that Sammy says one Kitchener neighbor received this fall by resting his head upon the Skull, or the use of an arm — previously arthritic to the point of paralysis — that was restored to another Kitchener resident in 1973.

The Skull's 32 even teeth are set in a smirk that looks anything but powerful. Perhaps it's just bemused at being an AWOL national treasure: the British Board of Trade declared it such after Sammy took it out of England under licence in 1974. Somehow she has not yet gotten around to returning it. It is her private possession, she points out — though even that is being contested by the government of Belize (the modern name for British Honduras), which is most anxious to have the Skull back. The Belizians point out that it's moot whether Mitchell-Hedges was given the Skull in 1927 as a parting gift by the Mayan chiefs, as he claimed, or if he simply took it. The law prohibiting the export of artifacts had been passed three years earlier, in 1924.

But soon the Skull will be returning to England. "I don't want to spend another winter in Canada," says Sammy, shivering at the thought. She has lived here for the last 13 years, but now plans to abandon North American life for a Devonshire home for herself and Cynthia and a nice private museum for the Skull. "Not the British Museum," she says archly. "Not after the way they treated my father." ▶

Indeed. Archeologists and art experts on both sides of the Atlantic tend to agree that Frederick Mitchell-Hedges's career is the stuff of newspaper headlines rather than academe. Dr. David Pendergast, Mayan expert at the Royal Ontario Museum in Toronto, considers him an adventurous amateur at best: "He had no scientific training — none." Frank Dorland, a California biocrystallographer who studied the Skull over a period of six years, says that one German academic told him icily: "You are taking seriously the man who was the British Baron Munchausen" (the classic German spinner of tall tales whose best adventures took place in his imagination).

More than a few experts, in fact, suggest that the Skull is simply a skeleton in Mitchell-Hedges's closet. The notion upsets Dorland, who says "the Skull is genuine, even if most of the stories around it aren't."

Robert Sonin, a research associate at the New York University Institute of Fine Arts Conservation Centre, cheerfully takes a sledgehammer to what others have called "the world's most beautiful jewel." "It's no good at all," Sonin snorts. "I think it's a fraud. Around the 1880s there was a great vogue for things Aztec — especially things connected with blood sacrifice, as skulls would be. Artisans in Taxco, Mexico filled the European demand for reproductions, just as others fill it today for King Tutankhamen items."

The Skull's supporters are infuriated and amused by turns, though they do admit there's no way of establishing the Skull's age scientifically. In 1970 Frank Dorland took the Skull to the electronics laboratories of the giant Hewlett-Packard company in Mountain View, California, where they specialize in grinding precision crystal oscillators from chunks of electronic quartz crystal. "They couldn't date the Skull but tests proved the cranium and jaw came from the same piece of crystal. And even under the highest magnification there was no evidence at all of modern tool marks — or any tool marks at all."

Dorland argues, "by the process of elimination," that the Skull is approximately 12,000 years old. Others, like Don Potter, a Toronto business entrepreneur and longtime investigator of the unexplained, have their own theories. "The Skull was made with total disregard for the natural axis of the crystal," says Potter, "which means that even with modern tools it would have split during carving. The only alternative explanation is that it was made — and left behind — by a civilization superior to ours."

Potter — who gives the Skull partial credit for his being cured of a serious illness — points the finger at the legendary civilization of Atlantis which, he



Mitchell-Hedges and Alexander ponder the Skull: no more than 200 years old, the psychic said later, "but I didn't want to say so"

suggests, made the skulls as forms of walkie-talkies or radios. "What was the first modern radio — the 'cat's whisker' — if not a chunk of crystal?" Erich von Däniken, the German who drove his *Chariots of the Gods?* up the bestseller lists while he ground archeology into a comic-book subject, agrees, though he repeats his tiresome notion that, like everything else unexplained, the Skull was left behind by visitors from outer space.

"I agree with a lot of what von Däniken says, but not this, no," says Sammy softly, emphatically. She's aware of the effect such theories have on the Skull's — and her father's — reputation. The Skull's worst enemies are boosters whose enthusiasm threatens to turn it into the sort of psychic freak show populated by pyramid power, the Bermuda Triangle and close encounters of the most ludicrous kind.

But since archeology can neither discredit Mitchell-Hedges's account of the Skull (in his autobiography, *Danger My Ally*), nor dislodge his critics, and since even six years of research can't give the Skull a scientific birthdate, Sammy ponders an alternative road to the truth — and hits sudden inspiration. The details take time, but one afternoon in late fall, when the bell beside the red door finally rings, Sammy flies down the stairs to greet her savior, her ace in the hole.

"Simon Alexander!" she cries, hugging the nonplussed young man at the door. By the bold stripes that adorn his clothing, Alexander might be a salesman; by his glib patter, a game-show host. In fact, he's a well-known English clairvoyant who flies in regularly to do private readings across Canada. His public reputation rests on the accuracy of his predictions that the U.S. Democratic

Party would nominate Carter for president; that Britain's Margaret Thatcher would form a majority Conservative government; and that Joe Clark would limp into office with a minority. He also predicted a funeral in the royal family — it would be the first since Queen Mary's in 1953 — half a year before Lord Mountbatten's assassination. Sammy was so impressed by his readings that she knew immediately *he* was the man to decipher the Skull. Alexander, sensing a challenge, agreed to give the god a free reading.

"Oh dear," Alexander grimaces, walking into the house. "I hope this doesn't alarm you ladies, but I don't see the Skull being with you much longer — even a year from now." Alexander bumps against something heavy and looks down: a policeman's truncheon, a foot of heavy oak, turned and finished with a leather thong, dangles from the hall banister. "Well, I guess nobody's going to nick it," he grins.

(Not without one large fight, anyway. Part of the Skull's mythology includes an incident — confirmed by Sammy — that took place in Spanish Honduras in 1930. Sammy, travelling with another woman, was accosted by three outlaws, who did not have archeology on their minds. Sammy calmly drew her .45 calibre pistol and, with three bullets, shot all three dead. "We had to jump a train to the coast and then a boat out of the country," she admits with relish, "but I loved it.")

In the living room, much as Alexander ignores the Skull, he can't escape it. "I'm being drawn to it," he complains. "It's *forcing* me." And though there are at times eight people and two dogs in the room, Alexander begins to receive images from the Skull.

He describes the pictures to Sammy, who interprets them. "Three rocks are being moved by Indians," he intones. "There were three rocks around the Skull," she interprets. Alexander: "I see something curved, like an axe or pipe, in the ground underneath one of them." Sammy helps him along: "It's a curved neck piece, worn by the priests." "And the ground is soft and damp." "No," she says. "No?" "No," she repeats. Alexander stirs: "Wait ... that's not it. I'm seeing the Skull covered in this wet, soggy stuff. ..." Sammy's eyes open wide: "That's right! That's how the Mayas carved crystal, with the grinding sand worked into an herb poultice."

It's like a tennis match now: one's eyes move from Alexander to Sammy, back to Alexander. "Did anyone have trouble with their leg?" Alexander asks. This time, both Sammy and Cynthia start. "Why, my father did; he had four bullets in it. It was later amputated." Alexander describes a pastoral scene in a small, hillside village where the Skull is being worked by a chief or priest. Sammy takes over: "The Skull was made by five generations of one family of high priests. They were the only ones allowed to touch it." Now Alexander is getting feverish, ranging in on the moment of discovery in 1924: "They're yelling something ... one word. A short word — not in English — over and over again." Sammy beams: "Doom. The name of the Skull. The name of the beloved high priest in whose image the Skull was made."

Now Alexander puts himself in the Skull's place to "see" through its hollow eye sockets. "I'm seeing a woman — a young girl, really — something about her needing a baby, to prove herself. She's wearing a long dress ... maybe she's royal?" Sammy is silent, pondering, fitting the image, like clothes, to a ghostly set of memories. "Nooo," she exhales in disbelief. "It can't be ... maybe it *is* that girl! The Mayas gave my father a girl, maybe 12 or 13, to be his wife. Cynthia — where's the book?"

Frederick Mitchell-Hedges's autobiography is quickly referred to. There, in one of the plates, is the half-naked young bride-to-be. Alexander lets out a sigh of relief and retires from the field, looking utterly drained. "It's not a fake," he sums up. "I mean, it was made in Central America, somewhere up in the hills, but I'm stuck at 1924. I can't read how old it is."

A day later — privately — Alexander recants. "I just didn't get back any more than 180 to 200 years," he sighs, as if disappointed in his own vision. "But I didn't want to say so in front of all those people, in front of Sammy." He needn't worry: his disbelief won't affect her. After all, Alexander was only called to the Skull. Sammy was chosen. ■

The following translations from the UFO Akluelit (Sweden) No. 3, 1992, were provided to me by Eileen Fletcher of Sheffield, England.

If mysteries be your madness, savour these books. All five of them were written or compiled by **John Robert Colombo**, who is nationally known as "the Master Gatherer" for his innumerable books about Canada. Lately he has been dubbed "Canada's Mr. Mystery" for his publications in the field of paranormal Canadiana.

Doubleday Canada is the publisher of **Mysterious Canada**, a 436-page volume with 114 illustrations that is devoted to the country's major and minor mysteries of the past and the present. It is available in two editions: cloth (\$29.95) and trade paper (\$19.95).

Hounslow Press is the publisher of trade paperback editions of these four books (at \$14.95 apiece): **Extraordinary Experiences: Personal Accounts of the Paranormal in Canada...Mysterious Encounters: Personal Accounts of the Supernatural in Canada...Mackenzie King's Ghost and other Personal Accounts of Canadian Hauntings...and UFOs over Canada.**

These books as well as other books by **John Robert Colombo** are available at better bookstores across the country.

OTHER WORLDS

Flying saucer enthusiasts may not know it, but July marked the 6,233rd anniversary of mankind's first meeting with an outer space alien.

On July 19, 4241 B.C., ancient Egyptians recorded that an ET roared to Earth in an egg-shaped spaceship and taught Earthlings an environmentally conscious religion called Ma-at.

According to New York historian Frederick Meeske, an alien named Atum — which in Egyptian means "he who comes from himself" — landed next to a pyramid near the Nile River.

Meeske says although ancient records show the Egyptians were startled by the visitor from outer space, they treated Atum with a godlike respect.

He says the Egyptians apparently hid Atum's spacecraft in sacred sites for hundreds of years before the spacecraft and the ET vanished from history books without a trace. CAMBRIDGE REPORTER
SEPT. 2/92

SWEDEN.

OBSERVATION DATE: 18/5/92.

" TIME 24.00

" PLACE NR. TULLERÅSEN, JAMTLAND.

A couple were driving late at night near to Tulleråsen, they sighted at tree-top height, a bright blue/white light which showed to be a 10-15 metre long object with 8-10 apertures which gave out light. Outside the object was seen a blue haze. It stood still for 10-15 secs, it then disappeared, as suddenly as it had showed up. The weather was clear. No illumination was seen beyond the road, a dog which was in the car woke up and was unsettled.

The observers contacted F4, but they had not had any evening flying.

Investigator: PEDER BERGLUND.

OBS DATE: 17/4/92.

" TIME: 21.10 - 21.40

" PLACE: HÅLLASTÖMÅLA, SW OF EMMABODA.

On a Friday evening TORGNV BERNISSON together with two other colleagues were out listening for unusual bird calls (?). With no results they prepared to go home, his colleagues sat listening in the car for a moment. Suddenly, Torgny clearly saw a yellow light in a westerly direction. He shouted to the others to get out of the car ~~and~~ so they also saw the strange light

Phenomenon. After assessing it for 10secs. the light went out and changed into a dark cloud, little by little expanding. After about 30secs they heard a dull and quite long bang (or crack). They were at the pace certainly for a half hour and saw how the cloud in the otherwise cloudless sky, steadily dissolved.

INVESTIGATOR: HÅKAN FENANDER

OBS DATE: 30/9/92.

" TIME: 00.05

' PLACE: YXTAHOJMS RECREATION GROUND,
NORTH OF FLEN.

Carina Nilsson from Hågersten was in her summer house by Yxtaholms recreation ground direct north of Flen. She had switched on the tv and was going to close the blinds when she saw a wonderful star in the starry sky. She decided to go onto the balcony and look. Carina relates:

g sat
There about 10 minutes and saw two 'stars' ^(lights) which moved in exactly the same direction.

They glided from the west across the heavens then veered towards the north east and turned again. They circled around the area for about 20 mins and then returned to the west and disappeared. After 5-10 mins the two white "stars" returned. Then I

was even more curious. They took the same route again and at one point part of the forest lit-up just like daylight, and everything on the road, which passes approx 40-50 metres from the house. I first thought it was a car with full headlights on but no car came. This only lasted a moment, I don't know if it was ball-lightning but it was as bright as daylight. I wished someone else would come and see all this so I rang 9000 and was put through to the police in Katrineholm who were not interested. They directed me to Arlanda and there they could neither see anything or look for something in the air space. I even rang the editor's office at 'Folkets' (FOLKETS) but got no reply.

The object was still there and circled around the area. What colour or form it took I couldn't make out as it was disappearing and an aircraft passed (there is an air corridor above the area) and straight after it were these two lights returning from the west.

I even tried to ring other newspapers but it takes time to look in the directory so at approx 01:30 - 01:50 both the lights (objects) and the other (original?) star-like light had gone before the night sky clouded.

Over.

INVESTIGATOR: STIG AGGESTAD.

NORWAY

OBS DATE: 21/1/92.

" TIME: 21:30

" PLACE: ARENDAL.

An object similar to a water tower with a mast, travelled towards HISSY.

It was sighted for about 10 mins as it moved backwards, forwards and sideways and ^{was} seen from OKREVIKA. The observer had never seen anything like it before.

Ufo- Norge's representative also agrees it is not likely to have been any known object.

OBS DATE: 9/3/92

" TIME: Approx 22:00

" PLACE: HAMAR

Two women had an observation which was both unusual and frightening. A near contact of the third kind.

The women were on their way home, it was about 22:00hrs when they heard a noise. The frequency was such that it was not only heard but felt. They described it as something between a train and a car ticking over, the sound was deep and vibrating. Suddenly, they saw a brilliant white light and the contours of an object within the light. It blinded them and

make their eyes smart, yet they could not help looking at this strange thing which stood 2-3 metres above the ground, about 10-15 m in front of them on the road.

The object was triangular at the bottom and had a dome of transparent (glass or other material) and in spite of all the light, they could see three lights on the outside of each point. Then the tone of the light went down just like someone turning a switch. The women thought the object had gone but all at once it was there again.

Now they clearly saw two persons inside the object and that they moved jerkily. The women went towards the object in spite of being terrified and with a feeling of stark distaste. The person on the right had a steering wheel like instrument in front of him and looked so locked as though he had long (fair) hair. Then one of the women pointed out that it could be the light which shone and not the actual colour of the hair. He had large dark eyes.

The object disappeared quite suddenly. They could not describe whether it moved ~~itself~~ or not.

Later that evening at the home of one of the women, etc. Some noise was heard outside the

bedroom window. The noise increased and the women thought the object would drive through the window, so they crouched down. It was right over the roof and the women described it as an "earthquake" through the body. This experience was worse than their experience on the road.

A week after, one of them had a sight disorder. Both had deafness and nose-bleeds ~~at the~~ same also. A month later they felt completely drained of energy.

The women's descriptions of the incidents agree with one another except that one of them cannot describe some details relating to the persons inside the object. She only saw arms moving and outlines. She also mentions it was more like a round object with a triangular bottom as the other woman described.

One of them is interested in regression and hypnosis, for she feels more happened than they can remember.

Articles from UFO ARTIFACT (SWEDEN) NO 3 1992
TRANSLATIONS EILEEN FRECHER.

ENGLAND



Excalibur Books

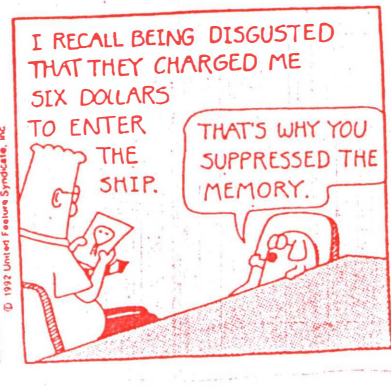
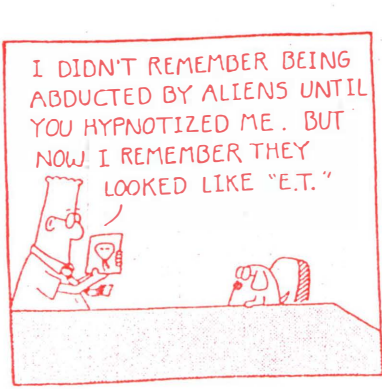
Telephone: (0247) 458579.

SPECIAL LIST 64

Books in this list are mainly secondhand. Prices are in British and American currency, but payment in any currency accepted. No reply=regret sold.

Rivenoak,
1, Hillside Gardens,
Bangor, Co. Down,
BT19 6SJ.
Northern Ireland.

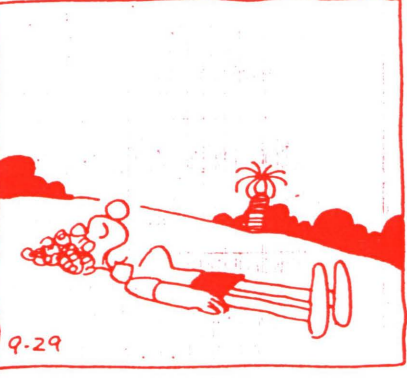
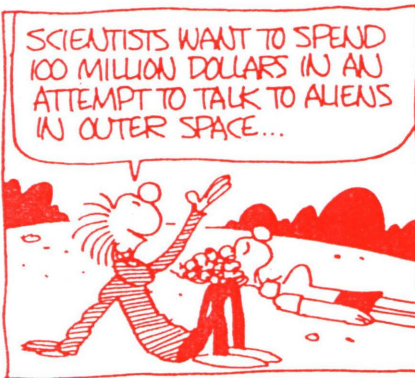
- McEwan, Graham: HAUNTED CHURCHES OF ENGLAND. 1989. Near fine, d.w. £6.50 \$10.50
- Hitching, Francis: THE WORLD ATLAS OF MYSTERIES. 1978. Book club ed.
Very good, d.w. A wide guide which includes missing links, Velkovsky,
megaliths, alignments, discovery of America, unknown beasts, etc.
£12.50 \$20.00
- Lethbridge, T.C.: E.S.P. n.d. Book club ed. Corners softening, else v.g.,
~~protected~~ d.w. somewhat worn. £8.50 \$14.00
- Keel, John A.: JADOO. New York, (1957). Very good copy in damaged d.w.,
protected by cellophane. £15.00 \$24.00
- Palmer, Terry: THE GHOST WHO LOVED ME. 1989. Allegedly true account of
psychic experience. Very good, some harm to d.w. £6.50 \$10.50
- Green, Andrew: PHANTOM LADIES. Folkestone, 1977. Very good, some wear to
d.w. £6.50 \$10.50
- Rickard/Kelly: PHOTOGRAPHS OF THE UNKNOWN. 1980. VG, d.w. £9.00 \$14.50
- Michell/Rickard: PHENOMENA. 1978. VG, d.w. little worn. £7.00 \$11.50
- Graves, Tom (ed): DOWSING AND ARCHAEOLOGY. 1980. VG. PB £4.95 \$7.95
- Thompson, Clive (ed): SITE AND SURVEY DOWSING. 1980. VG. PB £4.95 \$7.95
- Field, Claud (tr): JEWISH LEGENDS OF THE MIDDLE AGES. VG. £4.00 \$6.50
- Jessup, M.K. (ed): THE UFO ANNUAL. (1956). Corners softening, some
marks to covers, else very good copy. £9.00 \$14.50
- Mackenzie, Andrew: THE UNEXPLAINED. Top of spine buckled, else v.g.
£6.00 \$9.75
- Stirling, A.M.W.: GHOSTS VIVISECTED. 1957. Very good. £8.50 \$14.00
- Johnson, K.R.: THE FULCANELLI PHENOMENON. 1980. Very good, d.w. somewhat
worn. £6.50 \$10.50
- Shuttlewood, Arthur: WARNINGS FROM FLYING FRIENDS. 1968. One edge bumped,
mark on front cover, binding a little slewed, but a good copy.
£5.25 \$8.50
- Johnson, Frank: THE JANOS PEOPLE. 1980. Very good, d.w. £7.50 \$12.00
- Buttlar, Johannes von: THE UFO PHENOMENON. 1979. NF, some wear to d.w.
£6.50 \$10.50
- Randles/Warrington: UFOs & BRITISH VIEWPOINT. Book club ed. Corners
softening, else very good, d.w. £8.50 \$14.00
- Chapman, Robert: UNIDENTIFIED FLYING OBJECTS. (1969). NF. £6.50 \$10.50
- Kingston, Larry: AN EXPERIMENT WITH ALIEN INTELLIGENCE. UFO evidence.
New book. PB £5.95 \$9.55
- Story, Ronald: THE SPACE GODS REVEALED. Book club ed. VG, d.w.
£5.25 \$8.50
- Dutta, Rex: FLYING SAUCER MESSAGE. 1972. NF, d.w. £7.00 \$11.50
- Noorbergen, René: SECRETS OF THE LOST RACES. VG, d.w. £5.95 \$9.55
- Noorbergen, René: THE ARK FILE. Near fine, d.w. £5.95 \$9.55
- Poole, Keith: GHOSTS OF WESSEX. ~~Book~~ Fine copy. £4.95 \$7.95
- Singer, Kurt (ed): TALES FROM THE UNKNOWN. 1970. VG, d.w. £6.50 \$10.50
- *We are happy to recommend the journal ENIGMAS, dealing with UFOs and
other paranormal subjects. Order from: SPI, 41 The Braes, Tullibody,
Clackmannanshire, FK10 2TT. Subscriptions are £10 for 5 issues.



Curtis



EEK & MEEK® by Howie Schneider



Mister Boffo

